

Installation Instructions SZ349 and 350

Screw-in ground anchor with placement hinge, for SCHATTELLO

The following instructions include all information necessary for the correct mounting and operation of your MAY screw-in ground anchor. For absolute safety, please read these instructions carefully and then keep them for later reference.



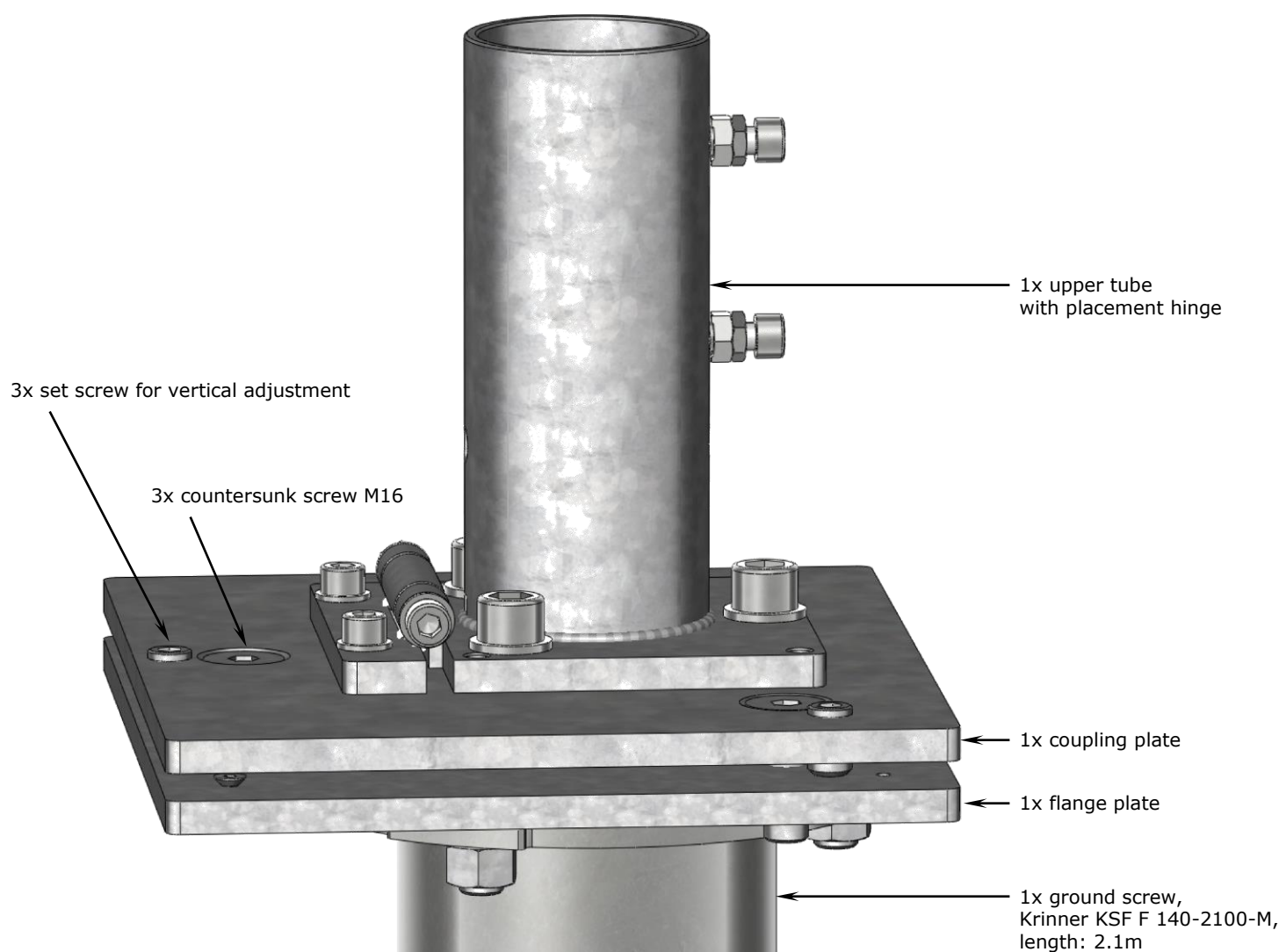
Caution

Non- observation of operating instructions can result in personal injuries or damage to property.

Please note that if these instructions are not observed, the manufacturer cannot assume any liability or guarantee.

- Always follow the safety regulations.
- Should you not understand any part of these operating instructions, please contact your MAY dealer.

Mounting drawing



Service: Installation of ground screw

Preconditions:

- SZ349 / SZ350 must be purchased (upper tube and ground screw).
 - Make sure there are no pipes, tubes, gas pipes, water or power supply in the ground. The property owner / customer must sign the foundation installation conditions (you will find the template on the last page of these instructions). By this written confirmation, the buyer / customer assumes liability and duty of care.
 - There must be free access to the installation area.
1. Check online where to find the next available Krinner sales partner (go to <https://www.schraubfundamente.de/en/kontakt/regions/> and enter your postal code).
 2. Contact your Krinner sales representative and clarify the installation. Optimally forward this instruction manual (digital version available) and ask for your individual offer, possibly a quote with hourly rate and call-out charge.
 3. Your Krinner sales partner must view the terrace and identify the soil class by a test drilling. The soil class must not exceed class 4, down to 2.1 m below ground level (length of the ground screw). This helps to clarify whether the KR20 screwing machine is suitable or whether a larger machine must be used. This soil analysis is only binding in case of a homogeneous soil fabric.
 4. This manual illustrates the "5 steps to fasten the ground screw". As soon as the SZ349 / SZ350, the ground screw and the MAY parasol has been delivered to the terrace, the service technician can start with the installation according to step 1, 2 and 3. Main tools required: Screwing machine KR20, hammer drill, a $\varnothing 40 \times 800$ mm rock drill, a Krinner screw-in attachment F1234567, a 1.2 m ground screw and in case of multiple parasols an optical level. In order to coordinate this project, it is recommended to have a MAY representative on site.

Placing the ground screw

1. Allow sufficient space between parasols or between the wall of the house and the parasol.



Caution

Parasols that are located too close together wear sooner.

Parasols may sway slightly. If there is not enough space between them, they may touch and abrade or scour the canopy fabric at the spoke ends.

- Make sure that there is a clearance of 15-20 cm between the parasols (or between the parasol and the wall of the house).

2. Bear in mind, we are able to compensate any unevenness of the ground by adjusting the height of each individual parasol. Extra - length upper tubes are available at 10 cm gradation and can be adjusted and accommodated on-site.

5 steps to fasten the ground screw

Preliminary, let the property owner / customer sign the foundation installation conditions (see page 11) and archive it legally.

1. Step 1: Removal and primary drilling

Remove paving and gravel until a depth of approximately 15 cm. Use a \varnothing 40 mm drill for the vertical predrill. Pay attention to the chapter "Placing the ground screw".



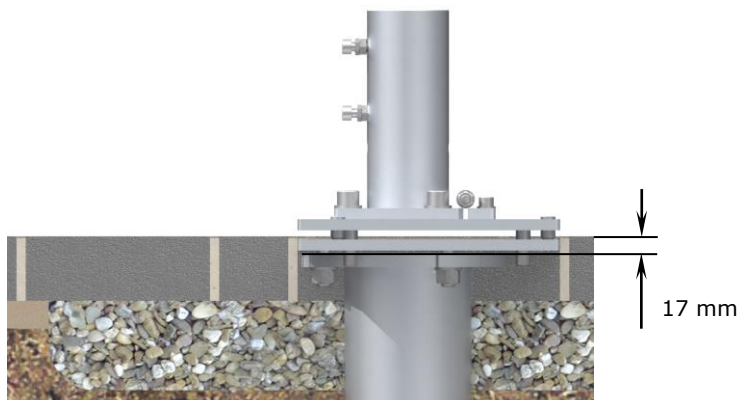
2. Step 2: Preparation

For preparation for the 2.1 m ground screw a smaller ground screw, about 1.2 m long, must be screwed-in and out again.



3. Step 3: Screwing-in

Screw-in the 2.1 m ground screw until there is a space of 17 mm between top of terrace and top of ground screw. This ensures the winter coverage will be even with the ground. In case of multiple parasols use an optical level to have all ground screws screwed-in to the same depth.



Step 4 and 5 and the erection of the parasol must be carried out by your MAY dealer.

4. Step 4: Alignment

See chapter „Alignment and fixation of upper anchor tube“ for detailed instructions.

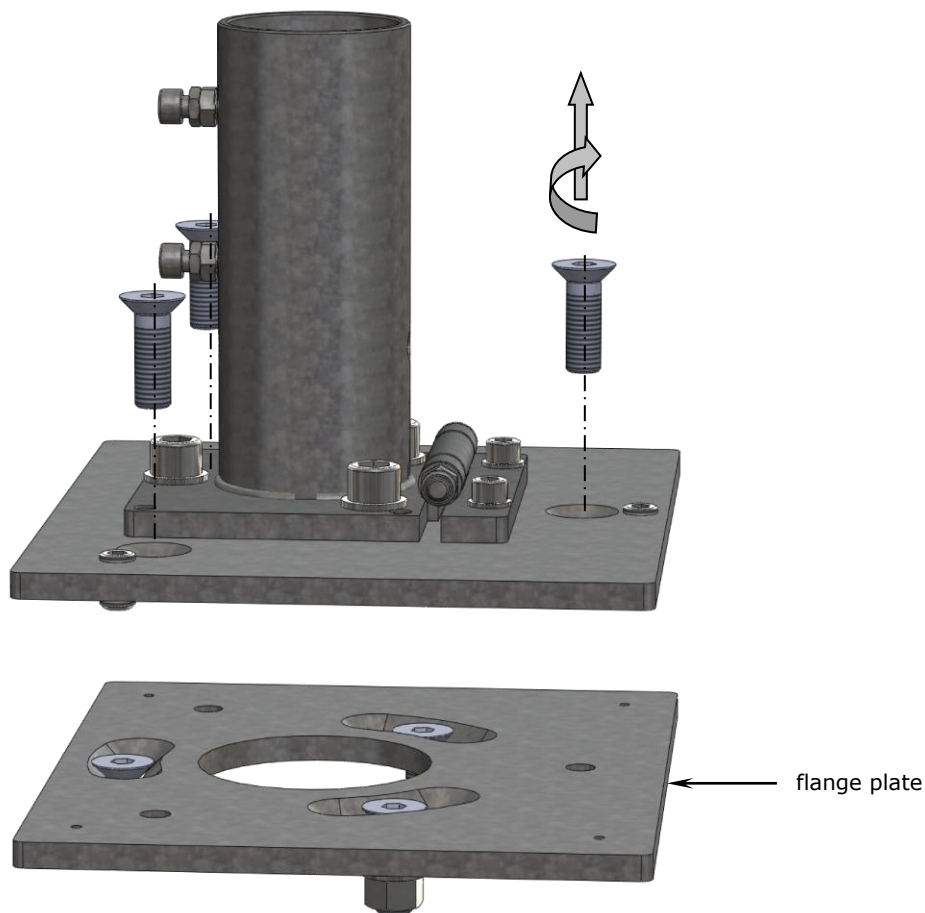
5. Step 5: Finish

Fill up the gravel and place the paving as close as possible to the flange. That way the ground screw disappears completely below the pavement.

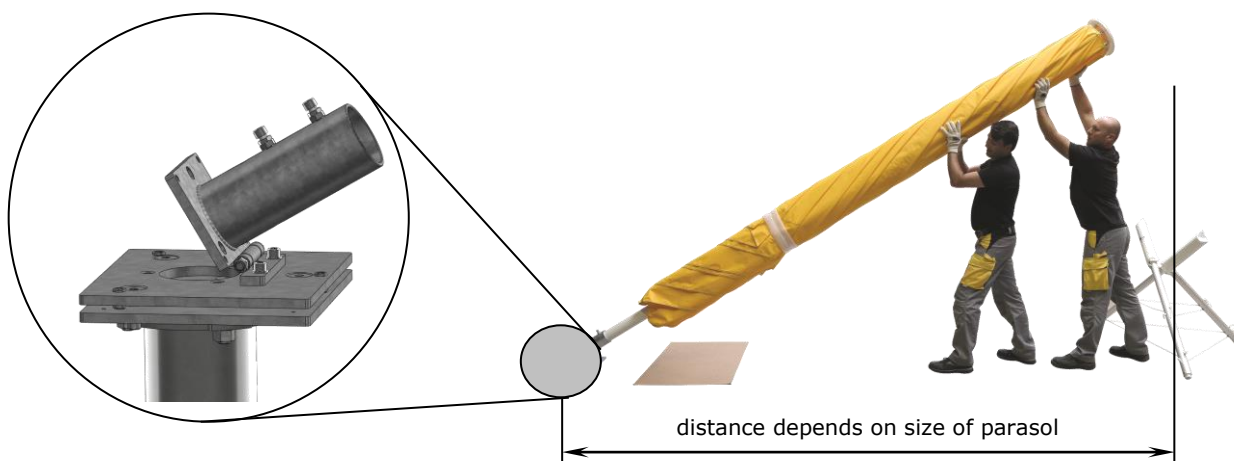


Alignment and fixation of upper anchor tube

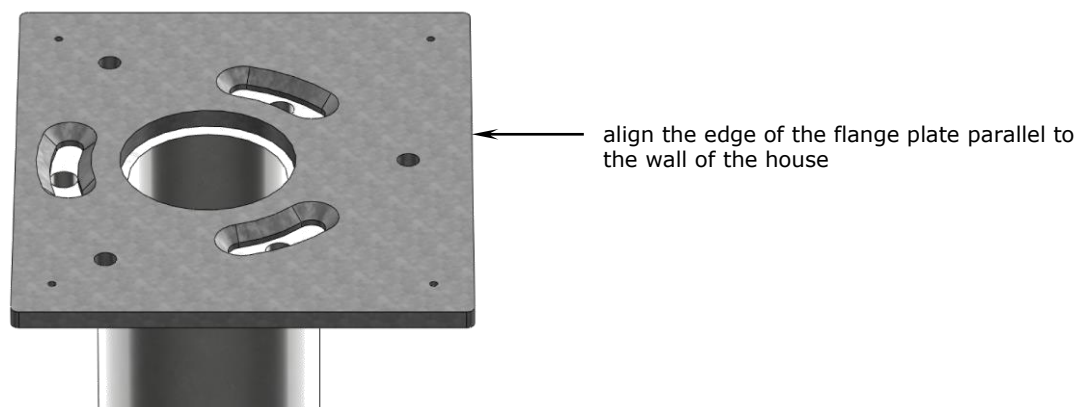
1. Unscrew the three M16 countersunk screws to remove the flange plate (see fig.)



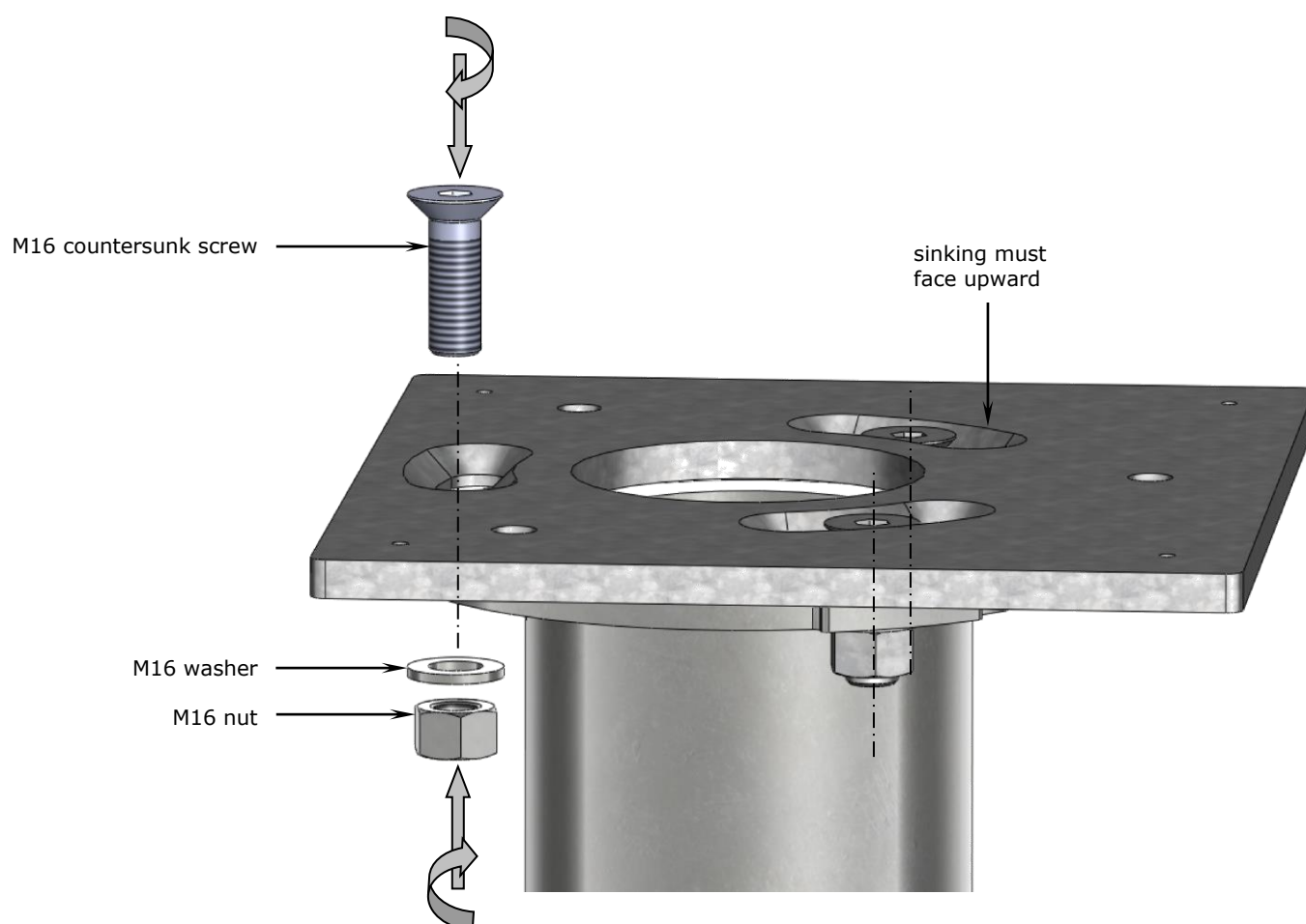
2. Remove three more M16 countersunk screws (with washer and nut) from the flange plate.
3. In order to enable a proper fixation to the ground screw, make sure to align the flange plate in a way that allows enough space for erecting and dismantling of the parasol.



4. If the parasol is supposed to fold down to the right hand side like shown in step 3, the flange plate must be attached onto the ground screw as shown in the picture above. To achieve a pleasing visual appearance of the installation, the flange plate also must be in alignment with the wall of the house or with the paving.



5. The countersinking of the slotted holes must face upward (see fig.). Put the three M16 countersunk screws into the suitable countersinking. Attach the size 16 washers and the M16 nuts from the bottom. Then apply 210 Nm to tighten the screw connection.





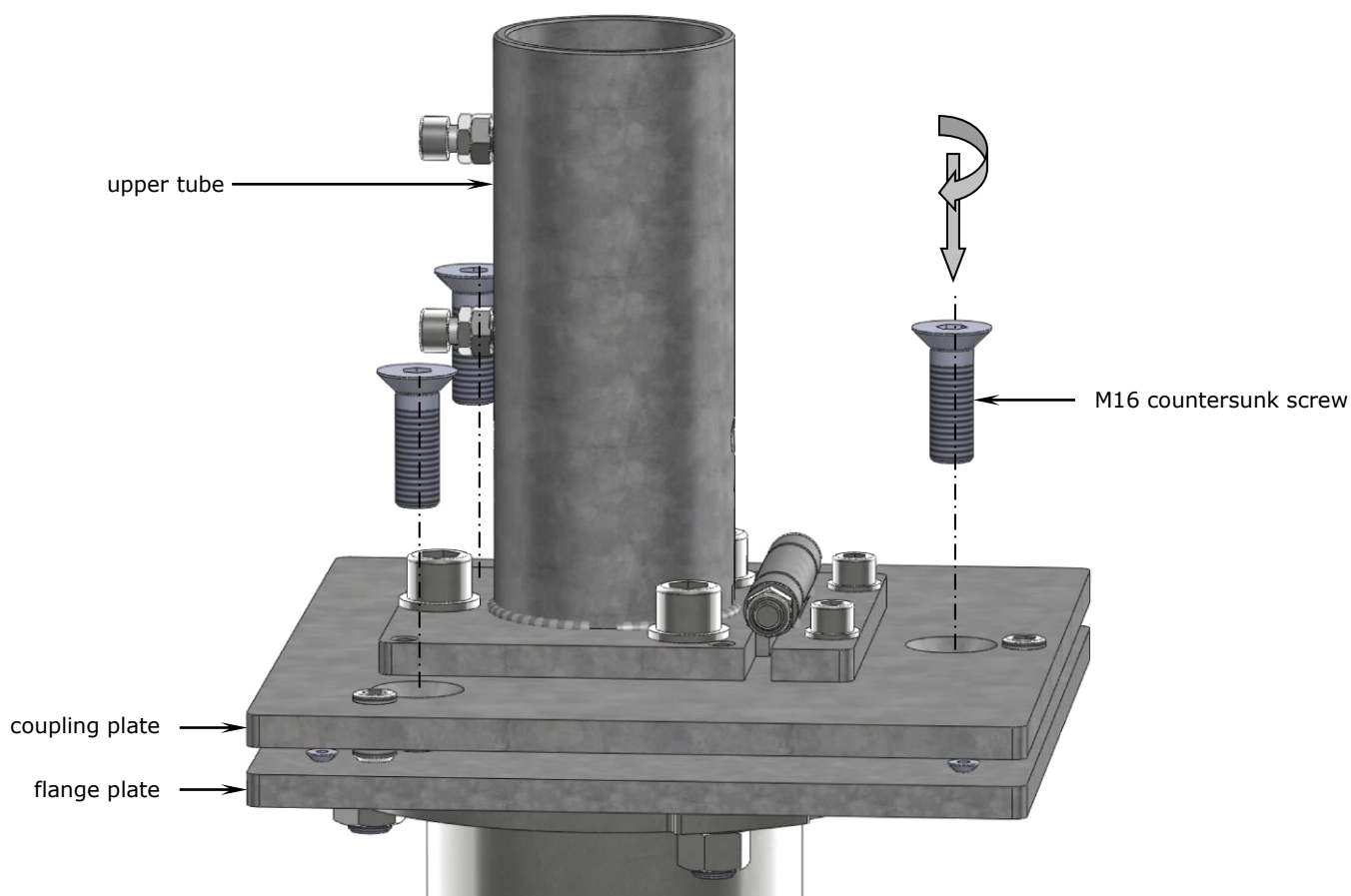
Caution

Screws that are not tightened correctly will work loose.

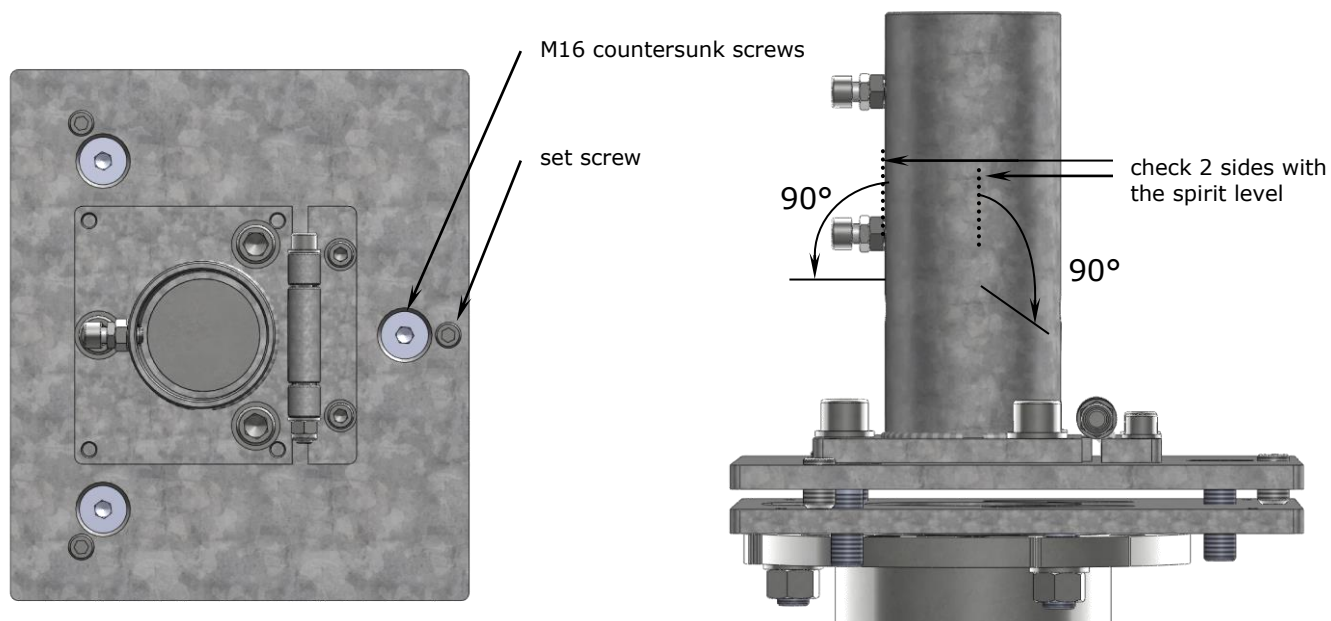
If screws are not tightened firmly enough, there will not be sufficient tensile force to trigger self-locking. If the screws are tightened too firmly and over-stressed, the screw connection may slacken.

- Tighten the three M16 screws manually using the enclosed hex key and extension. Exert as much force as possible. With the enclosed tools there is virtually no risk of over-stressing.
 - The correct torque for a torque wrench is 210 Nm.
-

6. Insert the M16 countersunk screws into the bore holes of the coupling plate and so screw the upper anchor tube with coupling plate onto the flange plate (see fig. below).

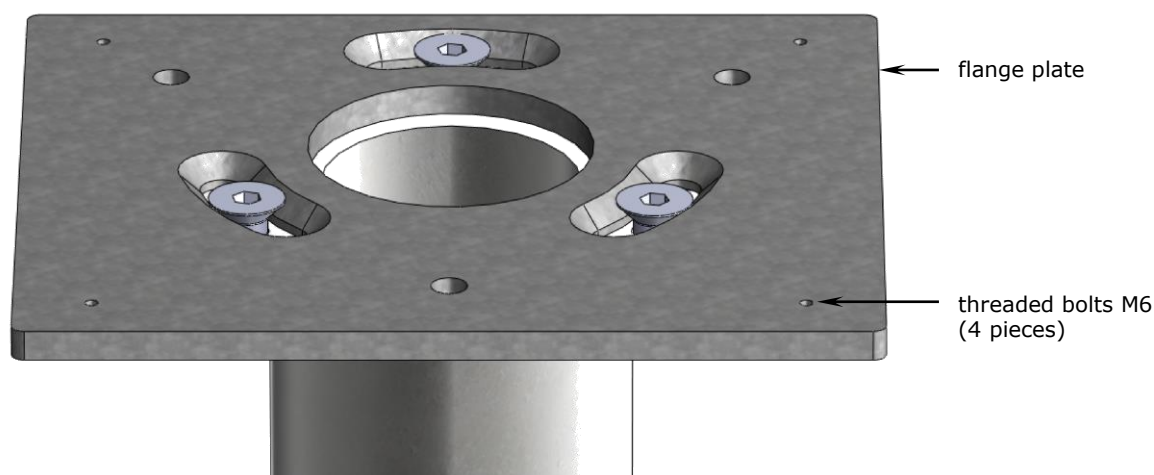


7. As a practical matter, the ground screw is never 100% straight. Therefore, the upper part must be aligned with a water spirit level (see fig.). Adjust the set screw and the M 16 screw as long as your spirit level indicates that the plate is horizontal. Then apply 210 Nm to tighten the screw connection.



Storage / dismounting

1. Lift the parasol from the anchor tube.
2. Remove the upper anchor tube completely, only the flange plate remains on the ground screw. Unscrew and remove the M6 threaded bolts.



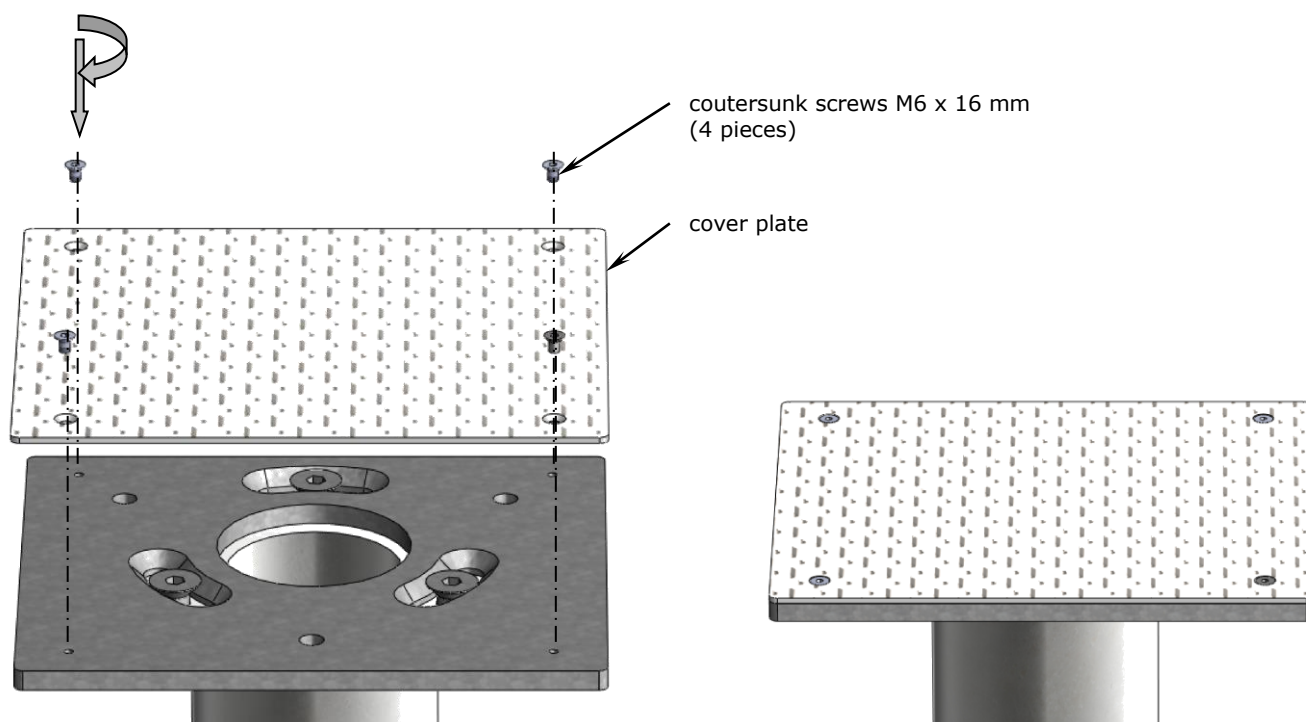
3. Screw the cover plate onto the bottom part of the anchor tube (see fig.)



Caution

The thread may get damaged.

Without cover plate, dirty water or sand may be washed into the flanks of the thread. As sand is harder than steel, the thread may get damaged when the screw is turned.



4. In case you have two or more parasols, each parasol and its corresponding accessories should be marked during dismantling (with punch marking or waterproof marker, e.g. for winter storage).

Marking saves a lot of time and helps to keep things in order.**Tip**

If clearly marked, each sunshade can easily be assigned to its proper location and re-erected parallel to the wall of the house or next to the others.

- For clear and easy later assignment use the same number to mark the centre pole, the anchor tube and the ground tube. For example, for sunshade No. 1, all three parts should carry number 1, all three parts of sunshade No. 2 should be marked with a 2, etc.

-
5. Lubricate the screws on a regular basis to prevent rust.

Mounting – Tools required

1. SZ349 / SZ350 (upper anchor tube + ground screw KSF F 140x1200-M by Krinner) including MAY standard parts
2. Hammer drill with $\varnothing 40 \times 800$ mm rock drill
3. Krinner screw-in machine KR20, telescopic guiding rod system, guiding safety bar, screw-in attachment F1234567
4. Cable reel
5. 1.2 m ground screw
6. Spade, shovel, small trowel
7. Spirit level + tape measure (possibly)
8. Folding rule
9. Hexagon key in size 3, 4, 8 and 14
10. Open-ended spanner size 17 + 19
11. Ring spanner size 24
12. In case of multiple parasols: optical level, ground marking spray, centring plate for rock drill and soil spikes for fixation (custom made).

Foundation installation conditions

Before installation of a ground screw, a foundation installation condition sheet must be signed. This template is a translation of a year 2011 copy from the Krinner company. If applicable, please request an updated version. A signed copy should be archived by the "ground screw service".

Project: _____

Scheduled date: _____ Scheduled time: _____

- The points of installation have been checked and are free of obstacles such as ground cables or underground constructions.
- The points of installation are marked and levelled.
- Cable diagrams are available.
- It is confirmed there are no underground cables (gas pipes, water, telephone, power supply, etc.) within a radius of 50 cm around the point of installation.
- There must be free access for the installation machines to the points of installation plus 3m x 3m around, installation points must be marked.
- In case the start of construction cannot be met as scheduled, please inform us 2 working days ahead.

paved ground _____	<input type="checkbox"/> yes	<input type="checkbox"/> no
tarred ground _____	<input type="checkbox"/> yes	<input type="checkbox"/> no
underground construction/waste _____	<input type="checkbox"/> yes	<input type="checkbox"/> no

Soil class: _____

Terrain characteristic: _____

Installation of ground screws into a rocky ground or into a rock, removal of paving and core drilling through asphalt are available at special service.

Further information: _____

Remark: In case of swampy ground, increased groundwater level, flood, muddy ground caused by strong rain or ground frost, ground screws cannot be installed. The offered price applies to the specified service. Any additional effort or service must be invoiced based on hourly rate. If during assembly it turns out that the installation of the ground screws cannot be conducted or only with excessive material and cost expenditure, we are not obliged to provide any service at these positions. This does not affect any further parts of the contract. The German law on contracts for work & services (BGB), current version, applies.

Warranty: Warranty excluded in case of natural changes of the ground like sinking, landslide, flood, earthquake.

 Date

 Signature customer, stamp