

Mounting instructions SZ208 / SZ008

Full-frame pedestal with screw-on tube, for type SCHATTELLO.

The following instructions include all information necessary for the assembly and operation of this frame pedestal. To avoid any misunderstanding we advise you to read these instructions carefully and then keep them for later reference.



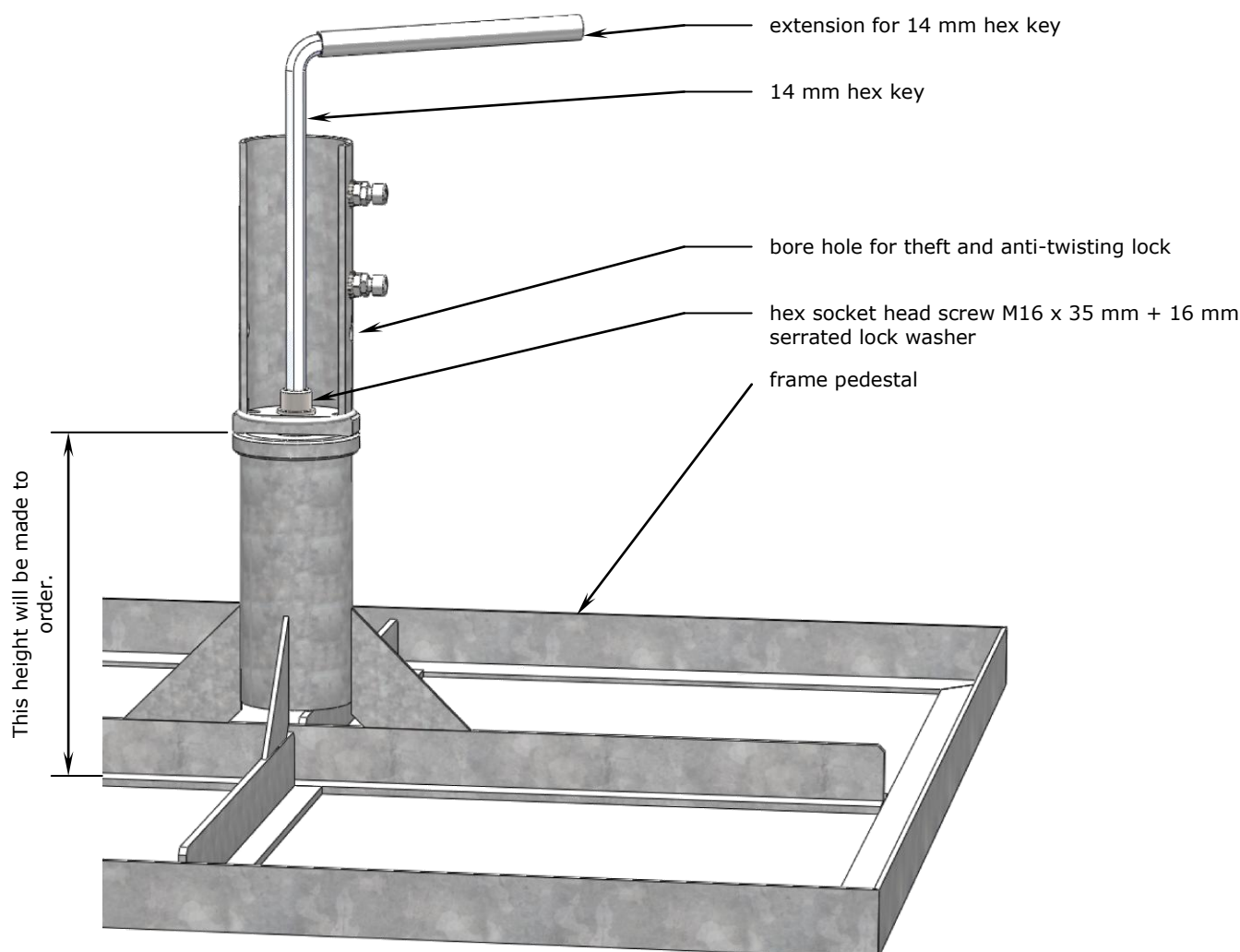
Caution

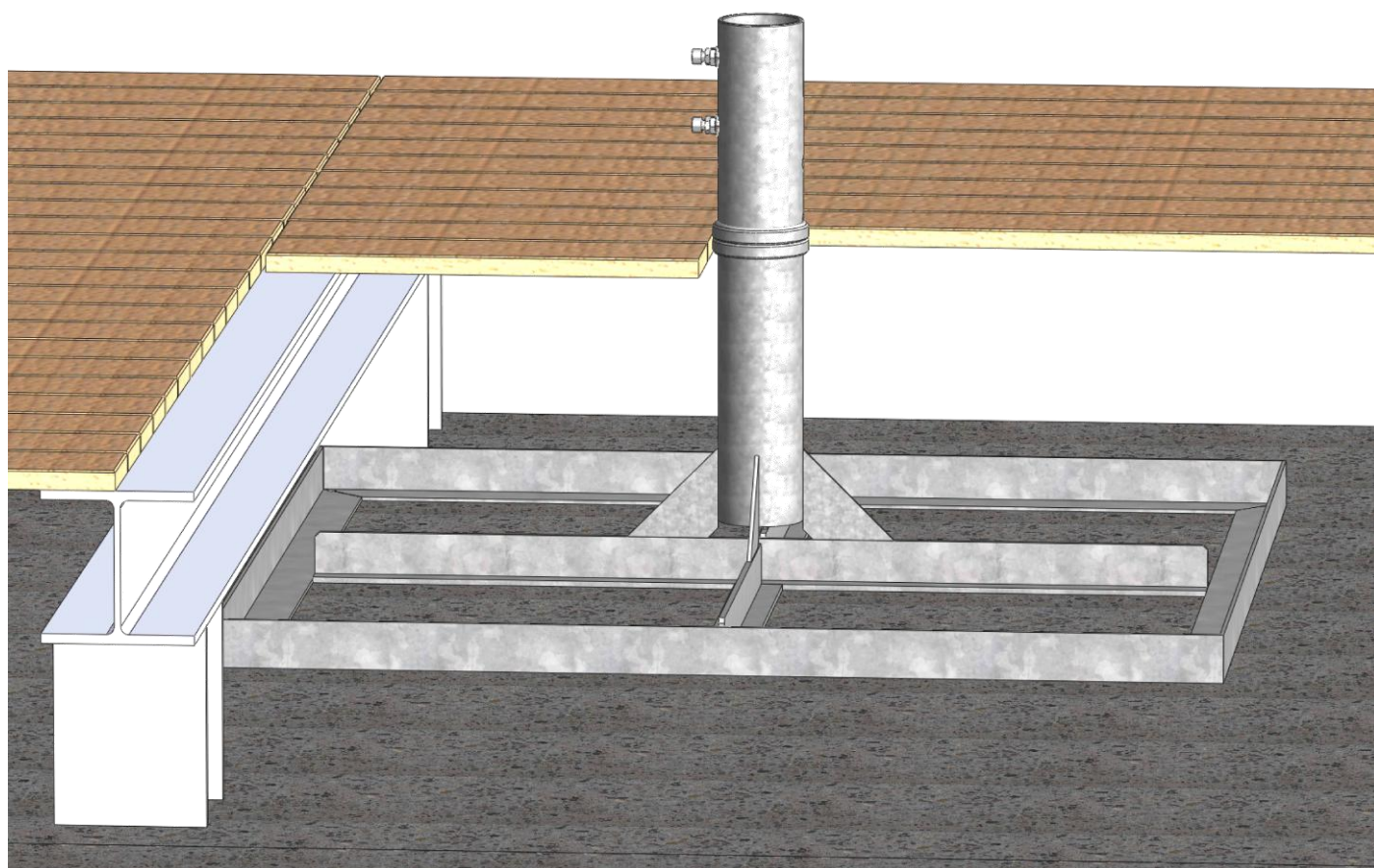
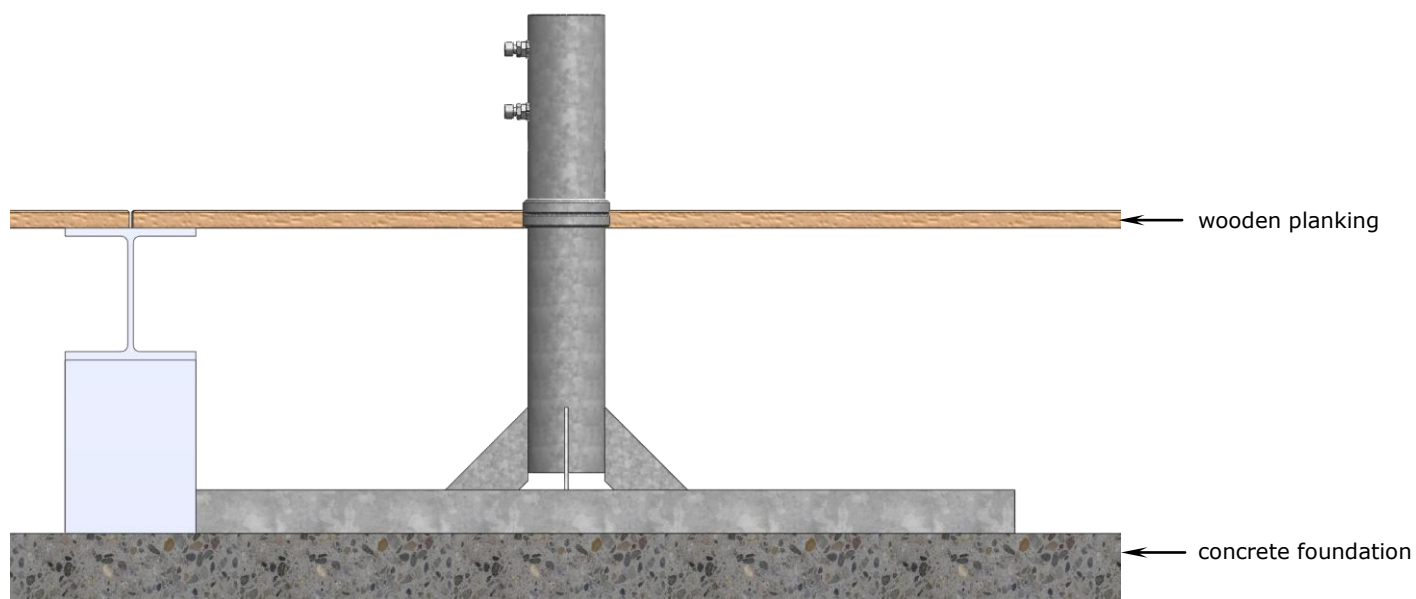
Non- observation of mounting instructions can result in personal injuries or damage to property.

Please note that if these instructions are not observed, the manufacturer cannot assume any liability or guarantee.

- Always follow the safety regulations.
- Should you not understand any part of these mounting instructions, please contact your MAY dealer.

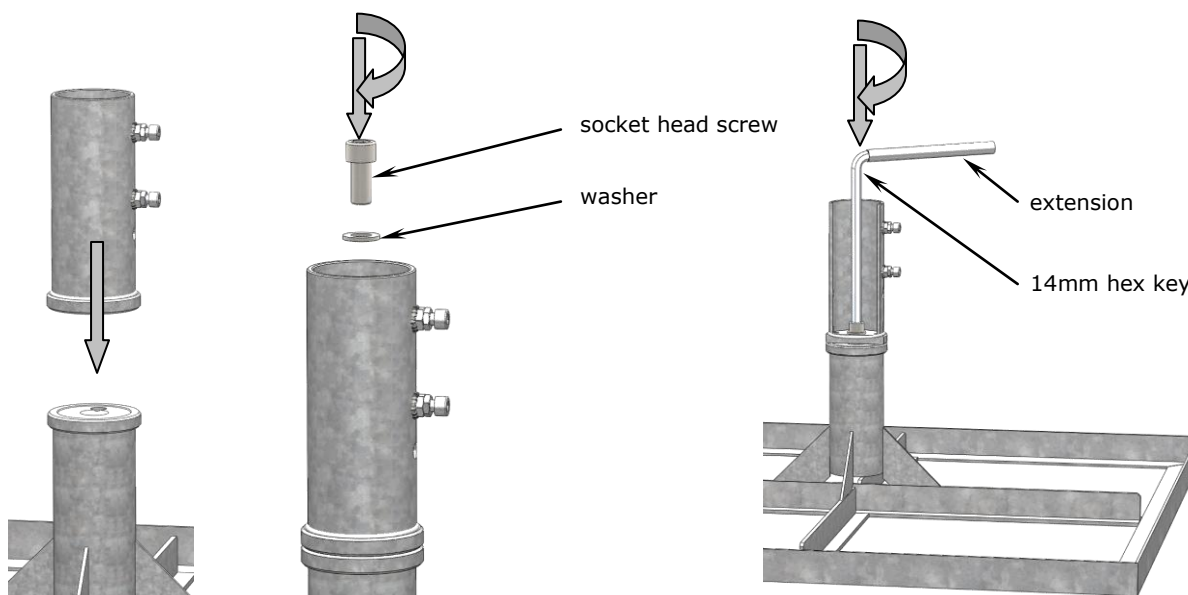
Diagram showing mounting materials and tools





Screw on upper part

1. Screw the upper anchor tube onto the lower tube (cf. illus.). Slip the 16mm washer on the M16x30mm socket head screw and tighten, using the enclosed 14mm hex key.



Caution

Screws that are not tightened correctly will work loose.

If screws are not tightened firmly enough, there will not be sufficient tensile force to trigger self-locking. If the screws are tightened too firmly and over-stressed, the screw connection may slacken.

- Tighten the screw manually using the enclosed hex key and extension. Exert as much force as possible. With the enclosed tools there is virtually no risk of over-stressing.
- The correct torque for a torque wrench is 210 Nm.

2. Determine the location of your parasol and place the frame pedestal there. Allow sufficient space between parasols or between the wall of the house and the parasol.



Caution

Parasols that are located too close together wear sooner.

Parasols may sway slightly. If there is not enough space between them, they may touch and abrade or scour the canopy fabric at the spoke ends.

- Make sure that there is a clearance of approx. 20cm between the parasols (or between parasol and the wall of the house).

3. Note that uneven patios are no problem for us. We are able to compensate any unevenness of the ground by adjusting the height of each individual parasol. Extra-length upper anchor tubes are available at 10 cm gradation. These can be adjusted in height on location with the help of inside spacers.
4. When setting the SZ208 / SZ008, make sure that the frame pedestal of the bottom component is (almost) flush (-3 mm) with the terrace floor surface.

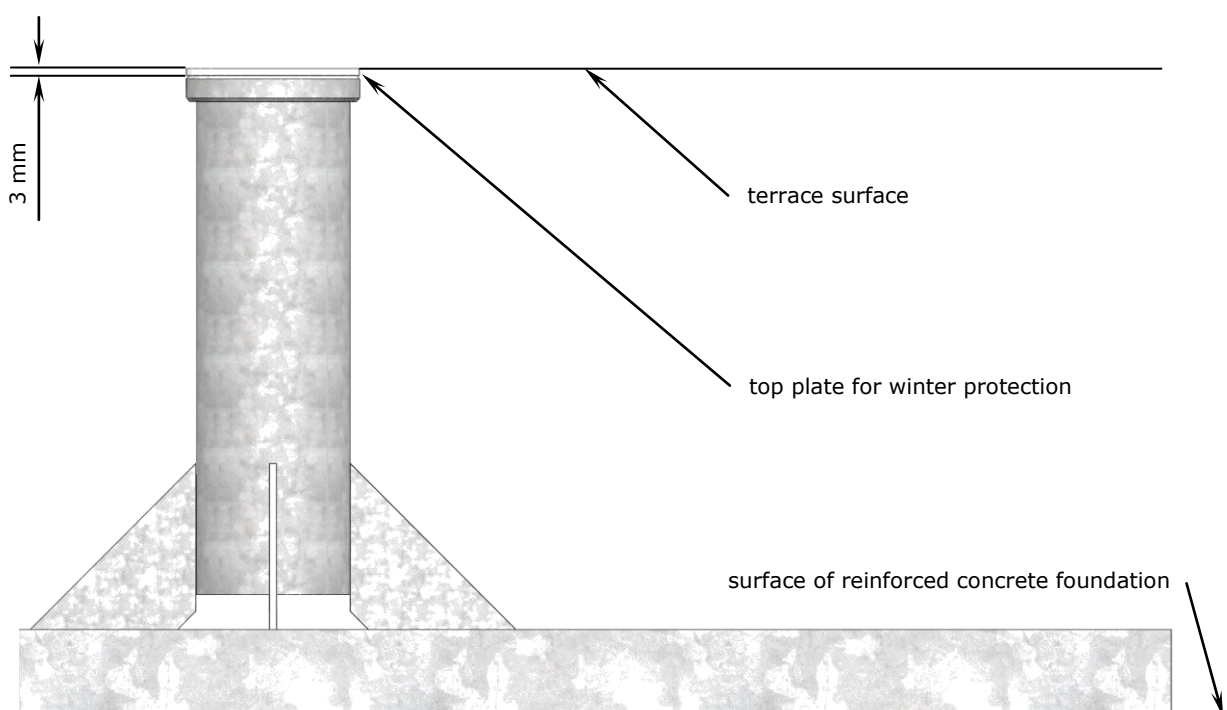


Attention

Avoid tripping hazard.

To ensure that the top winter plate (needed as a protective cover in winter when the upper anchor tube has been removed) is flush, the bottom component of SZ208 / SZ008 must be set 3 mm below the terrace surface. (cf. illustration) This checker plate for winter protection is 3 mm thick.

- Be sure to order the SZ208 / SZ008 bottom component with the correct height measurements so that it will fit properly between the top edge of the concrete foundation and the terrace floor surface. Please use our special MAY order form for custom-made production.
- In case of doubt, state a measurement that is slightly too short. Then this component can be jacked up with wedges. Measurements that are too long can, however, not be adjusted.
- The frame pedestal must be sufficiently underpinned until it stands absolutely even and cannot sway in windy conditions.
- When underpinning the frame pedestal, make sure that there is no surface pressure that may damage the separation layer (e.g. bitumen layer) under the frame.
- For height measurements take into consideration that the winter top plate is 3 mm thick.



4. As a rule, the reinforced concrete foundation is not completely even, meaning that the parasol will not necessarily stand perfectly upright.

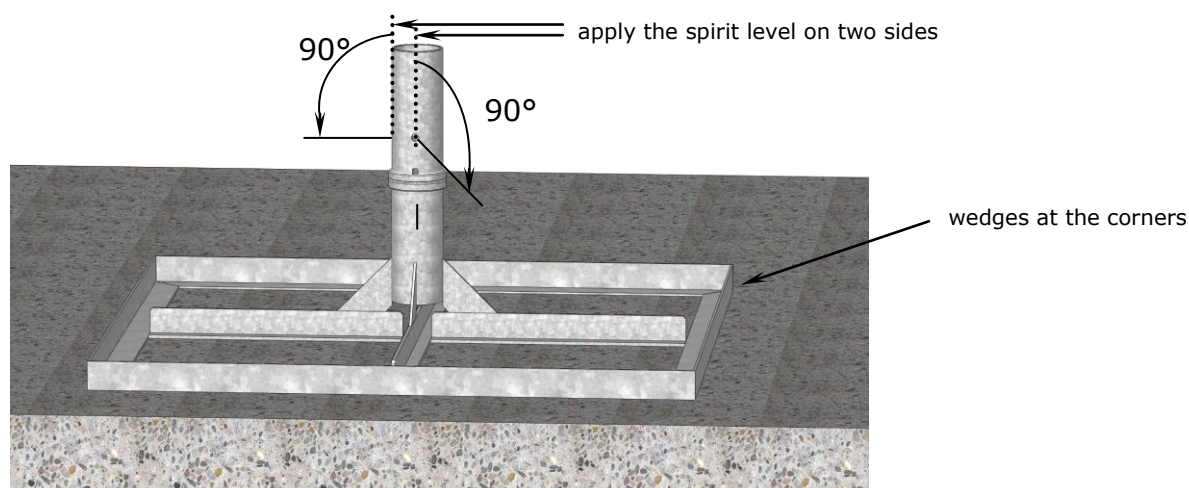


Attention

In order to ensure that both the upper tube and the parasol are in vertical position, the frame pedestal must be levelled.

Align the frame pedestal into horizontal position.

- Underpin all four corners with wedges until the frame is even. The wedges should be as broad as possible so that the load is well distributed and will not damage the vapour barrier membrane.
- Use a spirit level to align the SZ208 / SZ008. (cf. Illustration).



5. Place concrete slabs into the frame. In the chart below you can see how many 28 kg (50x50x5cm) concrete slabs you will need for your parasol:

Size of parasol	Number of concrete slabs needed
Ø 4m, Ø 5m, 2.5x3.5m, 2.5x4m 2.5x5m, 3x3m, 3.5x3.5m, 3.5x4.5m, 3.5x5m, 4x4m, 4.5x4.5m, 3x4m, 3x5mm, 4x5m, 4x4x4m, 6x6x6m	4 slabs
Ø 6m, Ø 7m, 4x6m, 5x5m	8 slabs

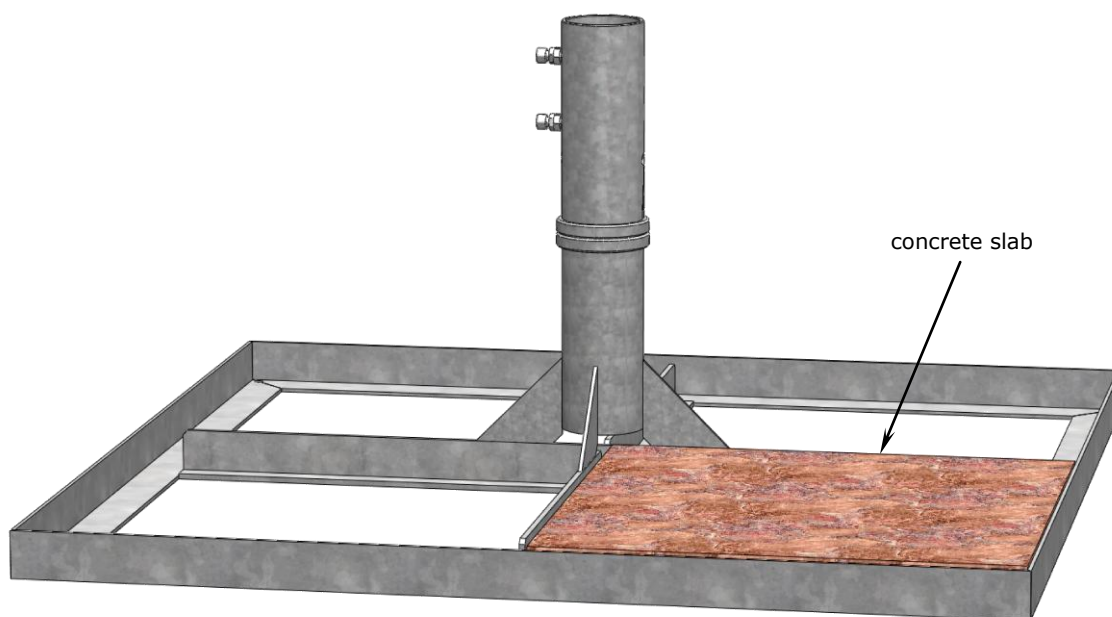


Attention

A falling parasol can cause serious or even fatal injury.

If the number of concrete slabs in the frame does not correspond with the size of the umbrella, the parasol may fall and cause injuries.

- Observe the information given in the above chart.
- In windy locations the number of slabs must be increased.



Storage/Dismounting

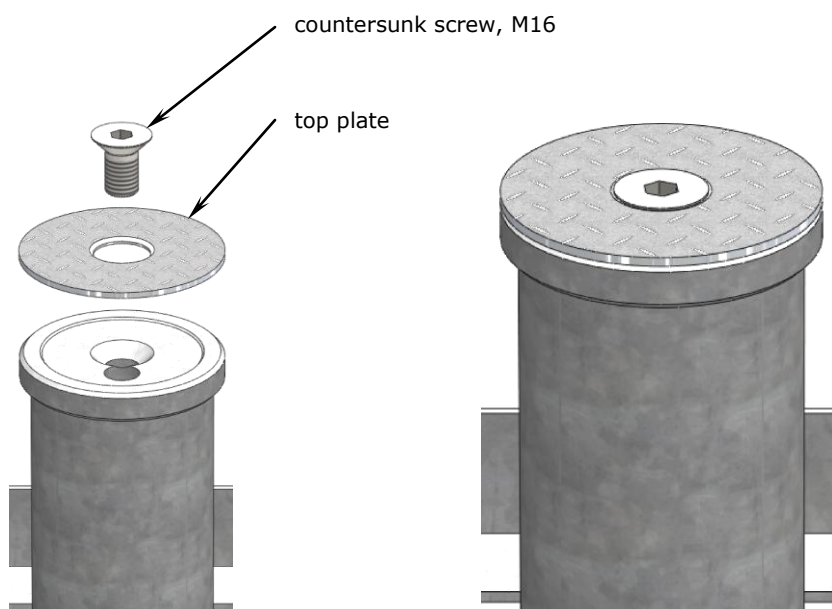
1. Lift the parasol out of the anchor tube.
2. Remove the upper anchor tube completely by screwing it off.
3. Screw the top plate onto the lower anchor tube. (cf. illus.)



Caution

The thread can get damaged.

When the top plate is not on the lower anchor tube, sand may get washed into the flanks of the thread. As sand is harder than steel, the thread may get damaged when the screw is turned.



4. If you have two or more parasols, it is advisable to mark them and their accessories (e.g. with metal-stamped numerals or using a waterproof marker) as soon as they have been dismantled (e.g. for winter storage).

Marking saves a lot of time and helps to keep things in order.**Tip**

If clearly marked, each parasol can easily be assigned to its proper location and re-erected parallel to the wall of the house or next to the others.

- For clear and easy later assignment use the same number to mark the centre pole, the upper anchor tube and the lower anchor tube. For example, for parasol No. 1, all three parts should carry number 1, all three parts of parasol No. 2 should be marked with a 2, etc.
-

5. Grease the screws regularly to prevent them from rusting.

Project management

All persons involved should discuss this installation option on site. If these instructions are provided to everyone during the planning period, arguments can be harmonised and therefore unnecessary costs for incorrect planning can be saved. In case this installation option is found not to be suitable, you may select another option from the MAY program. Customized options are available upon request depending on complexity.

Following parties may be involved:

1. House owner: Approval of project, assumption of costs, order placement, etc.
2. Leaseholder / gastronome: Is the positioning of the parasols suitable for the seating, assumption of costs, etc.
3. Architect: General legal planning, positioning, statics of the flat roof (dynamic and static load by weight and wind), control and supervision of the workmen, etc.
4. Workmen: Roofer clarifies and mounts the installation option, pay attention to waterproofing sealing, setting heavy-duty anchor bolts, etc.
5. Electrician: Defines electrical connection, clarifies cable and control, etc.

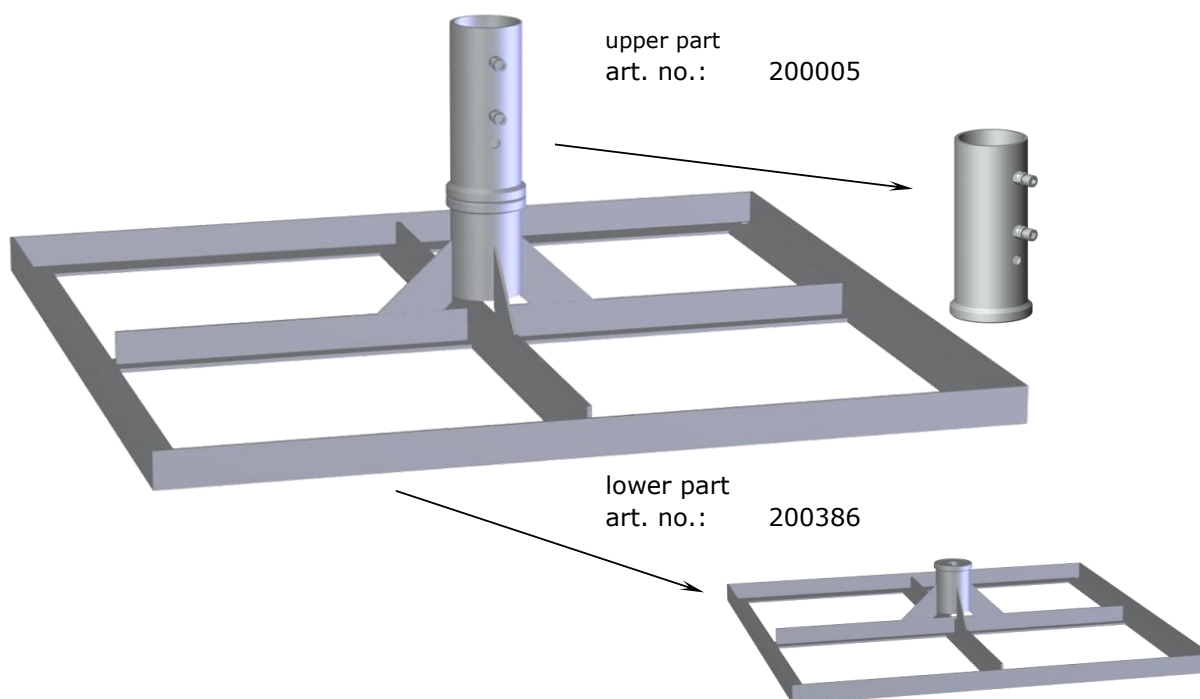
Full frame pedestal without placement hinge SZ208



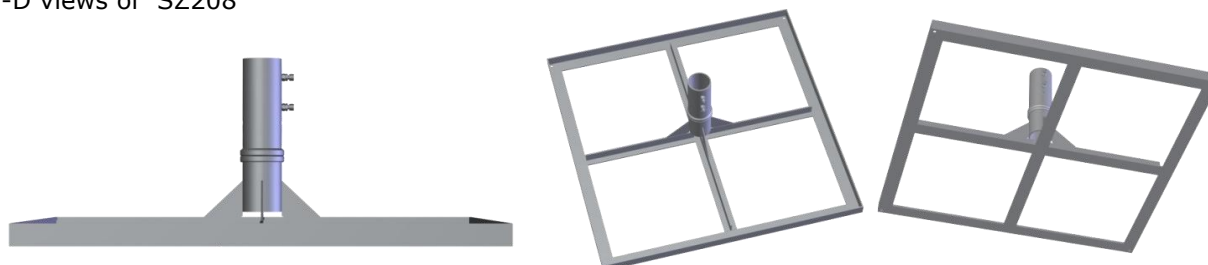
This order sheet must be filled out completely and supplied to the MAY company before production.

For 1 set of standard concrete slabs 50 x 50 x 5 cm.

art. no. SZ208: 2 pieces, screw-off upper part, fits for pole \varnothing 76 mm



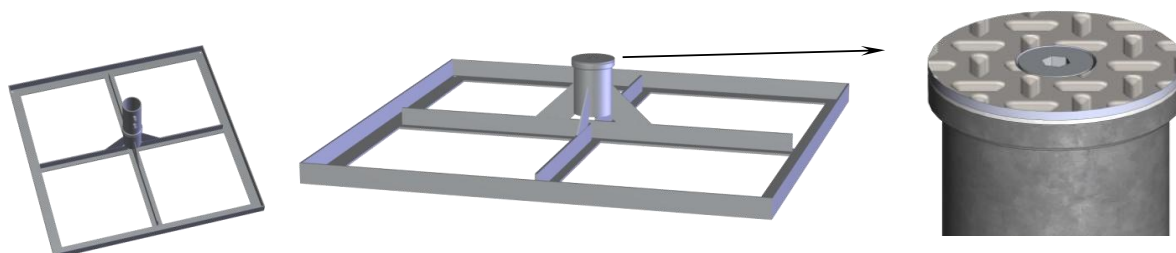
3-D views of SZ208



Combinable with pin and padlock, art. no. 200103.



3-D views of lower part SZ208 (200386) with top plate for winter protection.



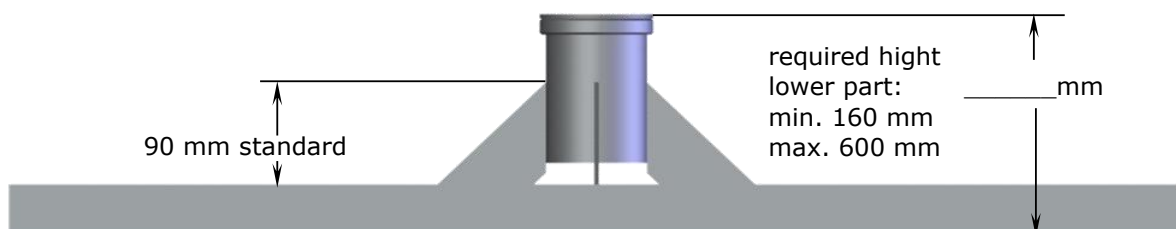
Full frame pedestal without placement hinge SZ208



This order sheet must be filled out completely and supplied to the MAY company before production.

Lower part of SZ208 (200386) with top plate for winter protection.

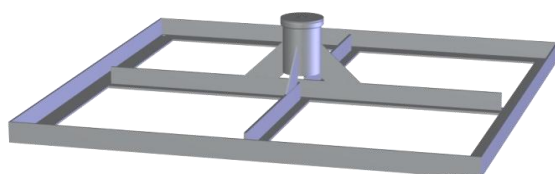
All bases are custom-made. When ordering, please state the total height required, including winter top plate.



If 2 layers of concrete slabs are used, 1 x XZ50 and 1 x XZ49 must be used.

In case the „height of the lower part“ needs to be smaller than 160 mm, option SZ008 must be used.

Customized versions with adjustable feet increase the height about approximately 25 mm.



When ordering, please fill in the fields below:

Quantity: _____ (mandatory)

(Dealer-) Name and address: _____ (optional)

(Dealer-) Commission: _____ (optional)

(Dealer-) Order number: _____ (optional)

(Dealer-) Name of clerk in charge: _____ (optional)

Order placed: _____ (mandatory)

Name

Date

Only for May Gerätebau GmbH:

Order number: _____

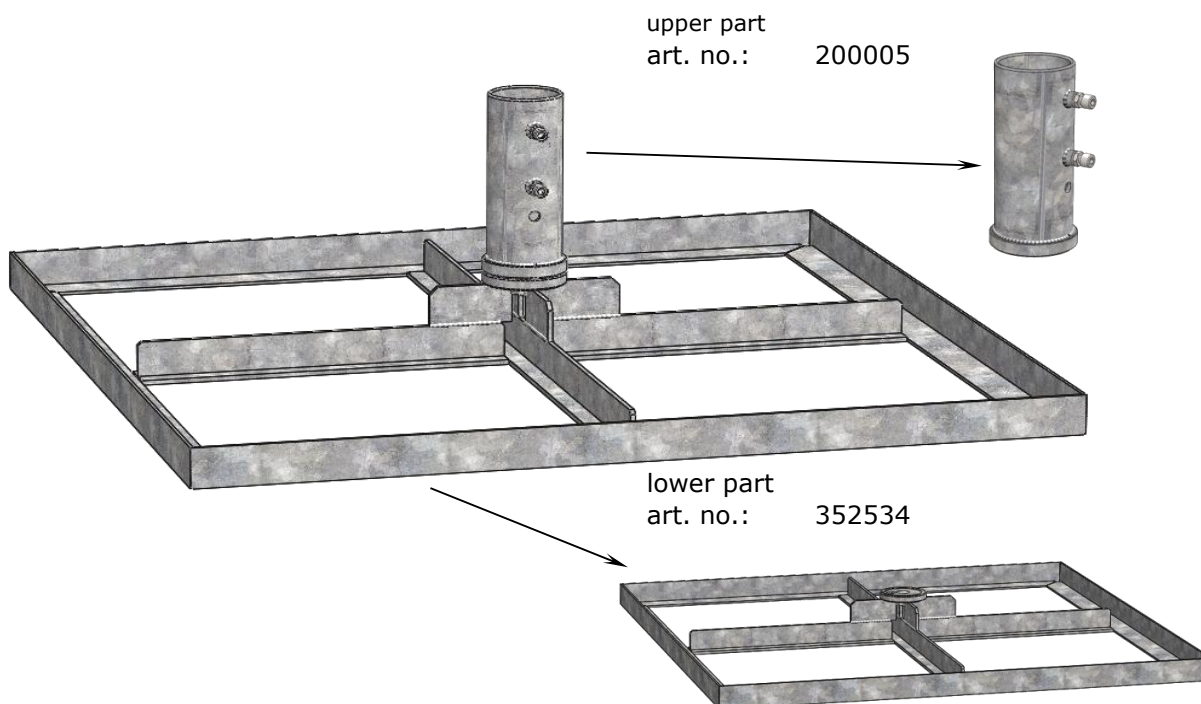
Full frame pedestal without placement hinge SZ008



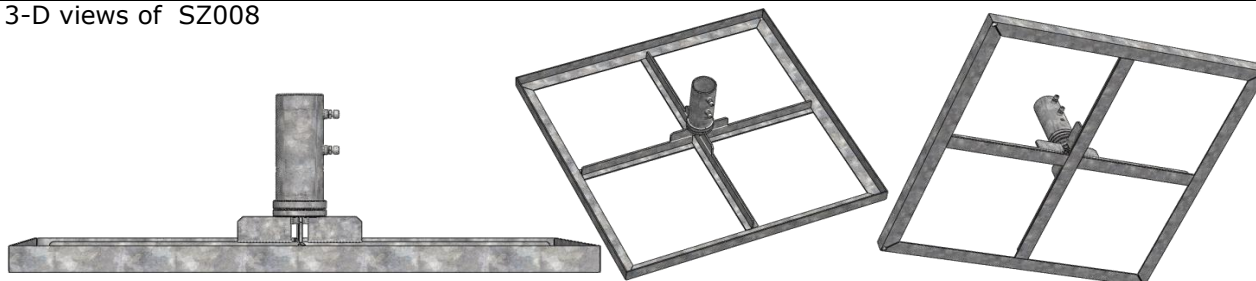
This order sheet must be filled out completely and supplied to the MAY company before production.

For 1 set of standard concrete slabs 50 x 50 x 5 cm.

art. no. SZ008: 2 pieces, screw-off upper part, fits for pole \varnothing 76 mm



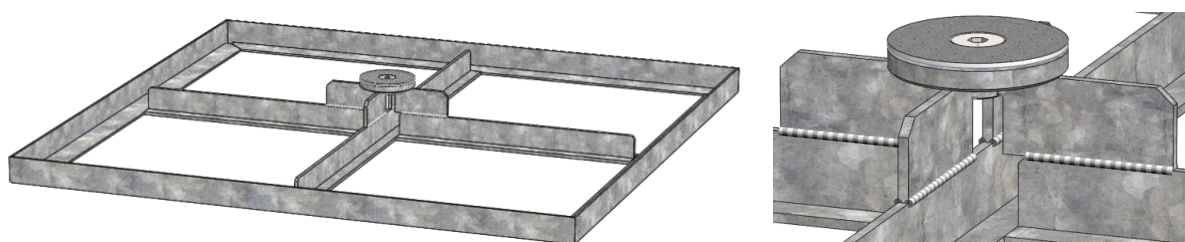
3-D views of SZ008



Combinable with pin and padlock, art. no. 200103.



3-D views of lower part SZ008 (352534) with top plate for winter protection.



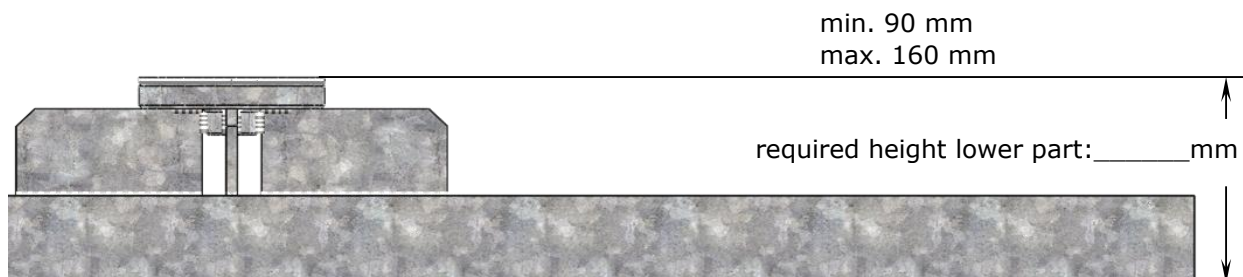
Full frame pedestal without placement hinge SZ008



This order sheet must be filled out completely and supplied to the MAY company before production.

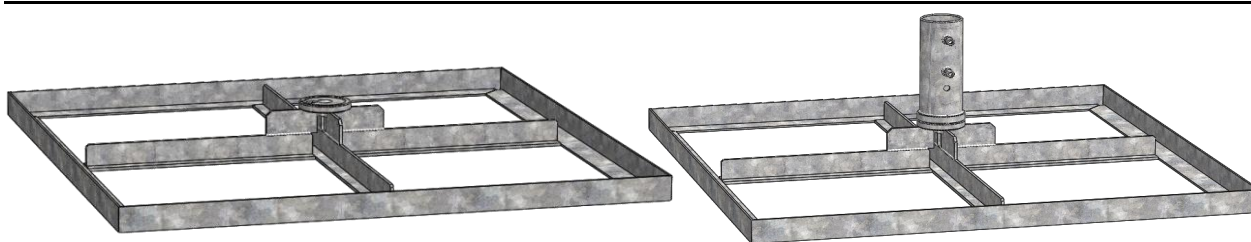
Lower part of SZ008 (352534) with top plate for winter protection.

All bases are custom-made. When ordering, please state the total height required, including winter top plate.



In case the „height of the lower part“ needs to be larger than 160 mm, option SZ208 must be used.

Customized versions with adjustable feet increase the height about approximately 25 mm.



When ordering, please fill in the fields below:

Quantity: _____ (mandatory)

(Dealer-) Name and address: _____ (optional)

(Dealer-) Commission: _____ (optional)

(Dealer-) Order number: _____ (optional)

(Dealer-) Name of clerk in charge: _____ (optional)

Order placed: _____ (mandatory)

Name

Date

Only for May Gerätebau GmbH:

Order number: _____

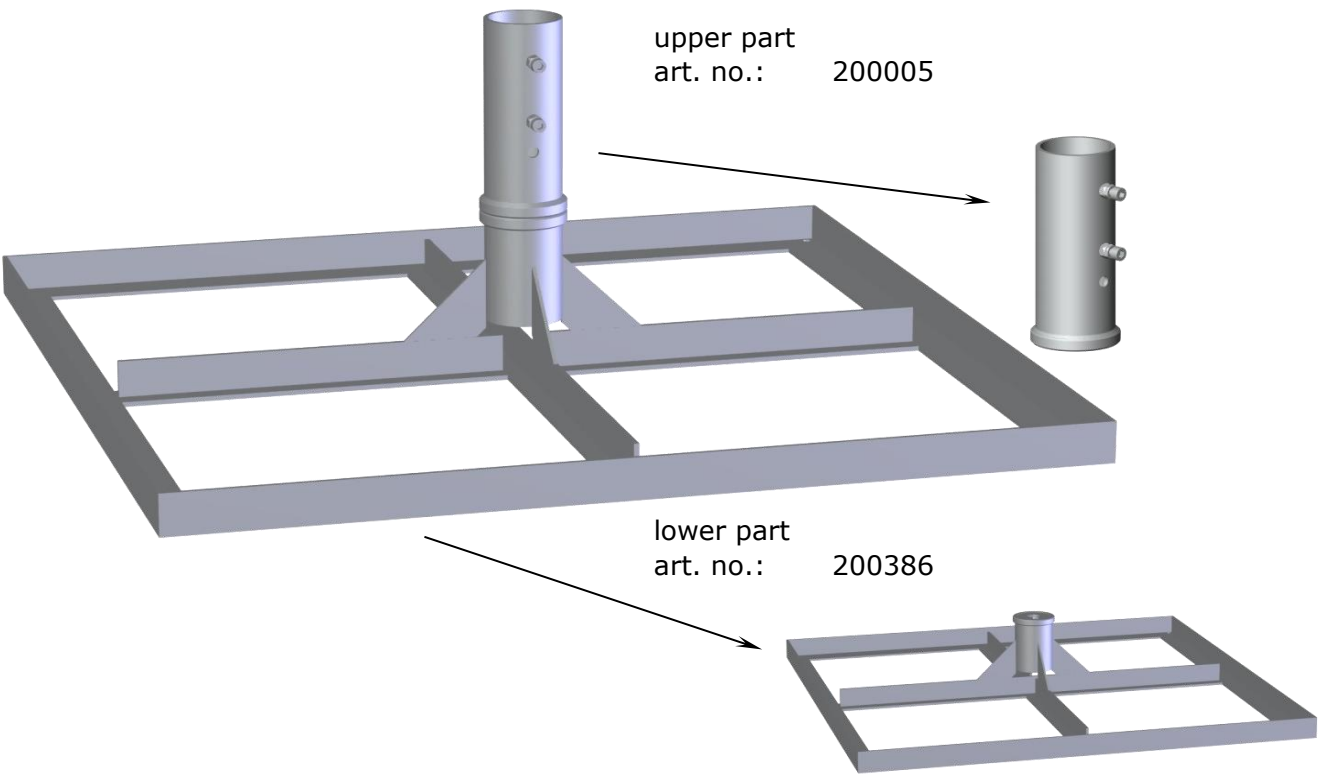
Full frame pedestal without placement hinge SZ208



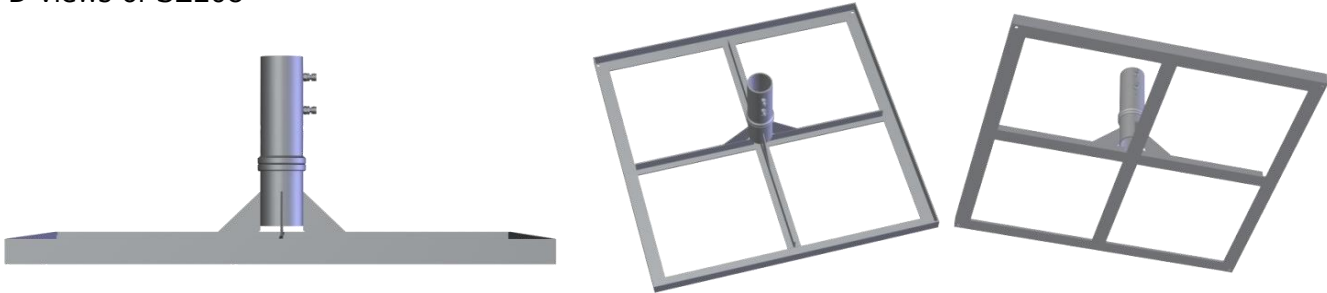
This order sheet must be filled out completely and supplied to the MAY company before production.

For 1 set of standard concrete slabs 50 x 50 x 5 cm.

art. no. SZ208: 2 pieces, screw-off upper part, fits for pole \varnothing 76 mm



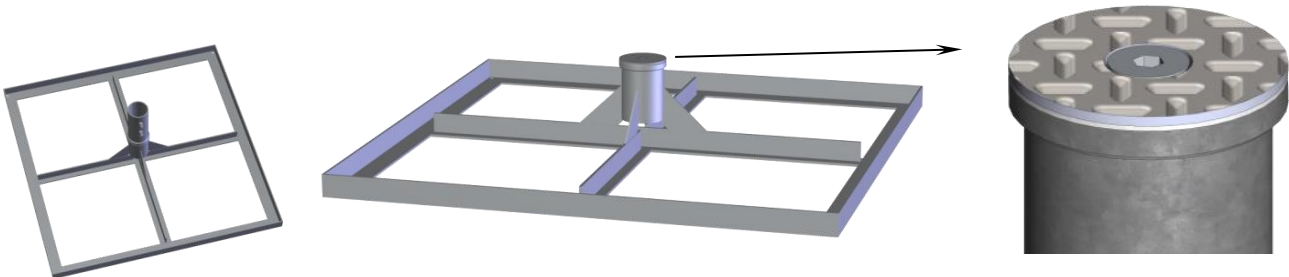
3-D views of SZ208



Combinable with pin and padlock, art. no. 200103.



3-D views of lower part SZ208 (200386) with top plate for winter protection.



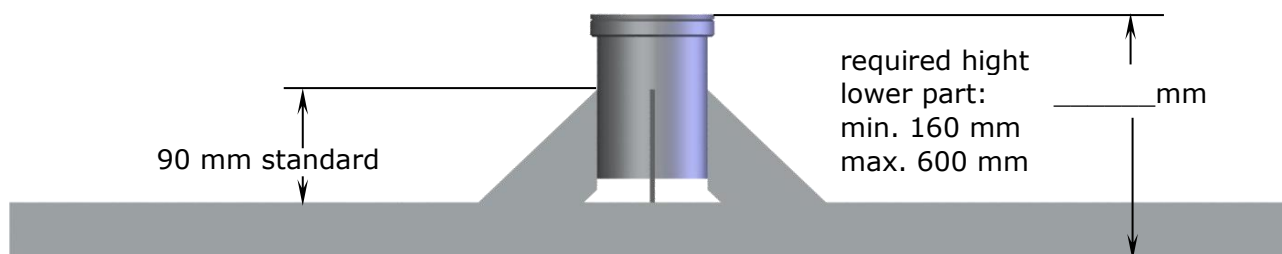
Full frame pedestal without placement hinge SZ208



This order sheet must be filled out completely and supplied to the MAY company before production.

Lower part of SZ208 (200386) with top plate for winter protection.

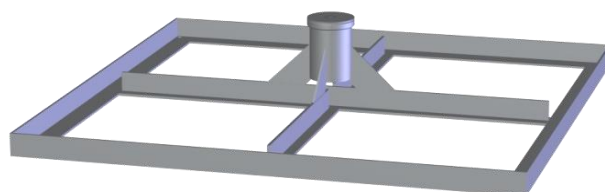
All bases are custom-made. When ordering, please state the total height required, including winter top plate.



If 2 layers of concrete slabs are used, 1 x XZ50 and 1 x XZ49 must be used.

In case the „height of the lower part“ needs to be smaller than 160 mm, option SZ008 must be used.

Customized versions with adjustable feet increase the height about approximately 25 mm.



When ordering, please fill in the fields below:

Quantity: _____ (mandatory)

(Dealer-) Name and address: _____ (optional)

(Dealer-) Commission: _____ (optional)

(Dealer-) Order number: _____ (optional)

(Dealer-) Name of clerk in charge: _____ (optional)

Order placed: _____ (mandatory)

Name

Date

Only for MAY Gerätebau GmbH:

Order number: _____

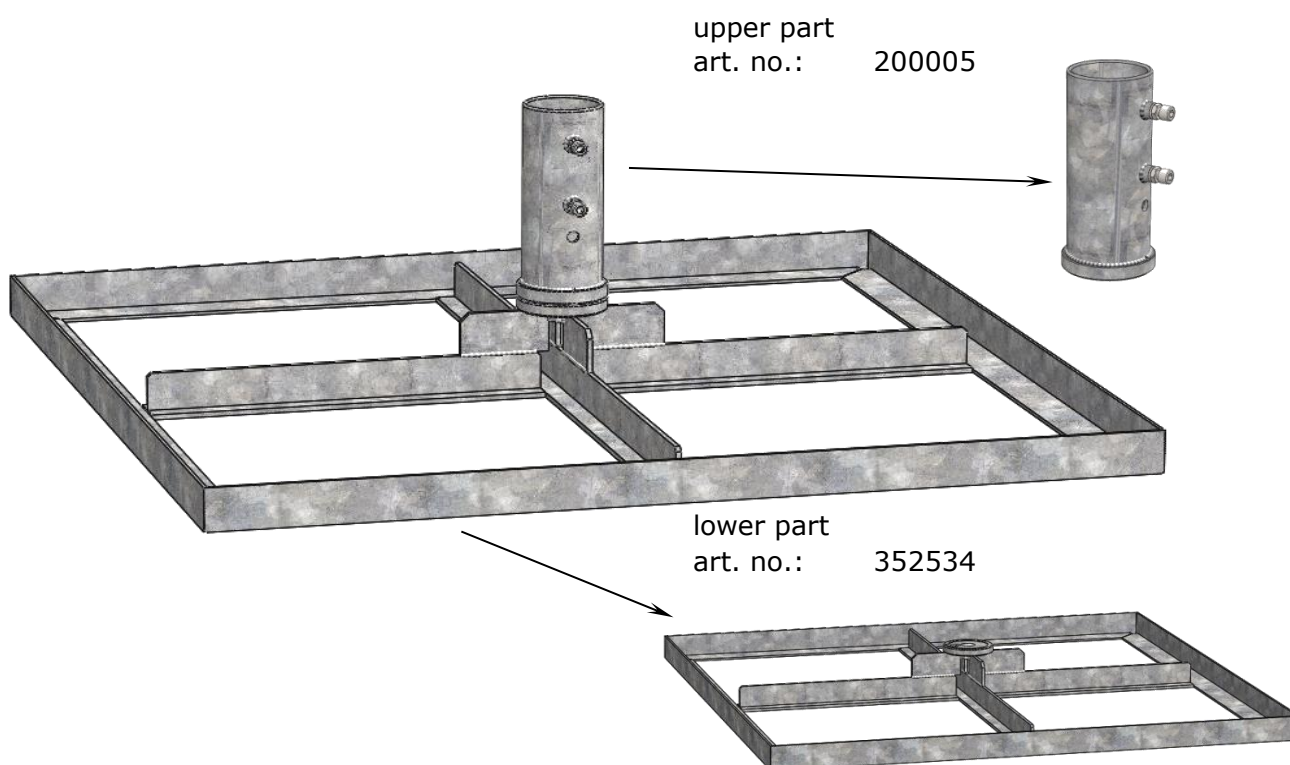
Full frame pedestal without placement hinge SZ008



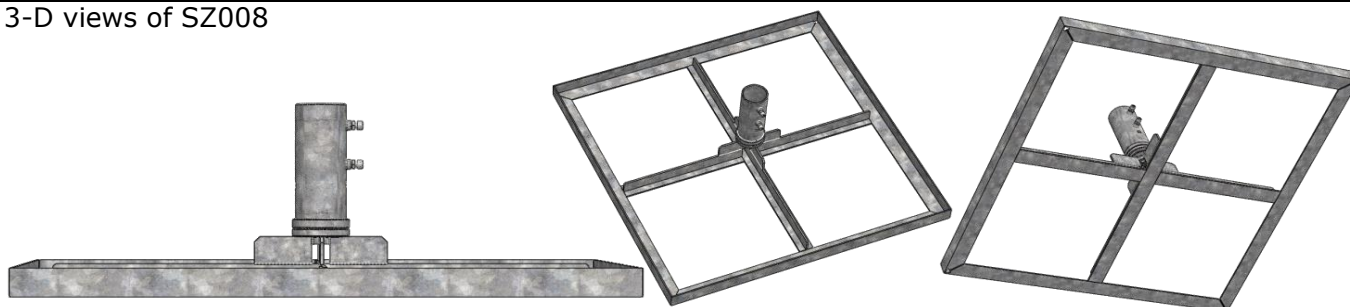
This order sheet must be filled out completely and supplied to the MAY company before production.

For 1 set of standard concrete slabs 50 x 50 x 5 cm.

art. no. SZ008: 2 pieces, screw-off upper part, fits for pole \varnothing 76 mm



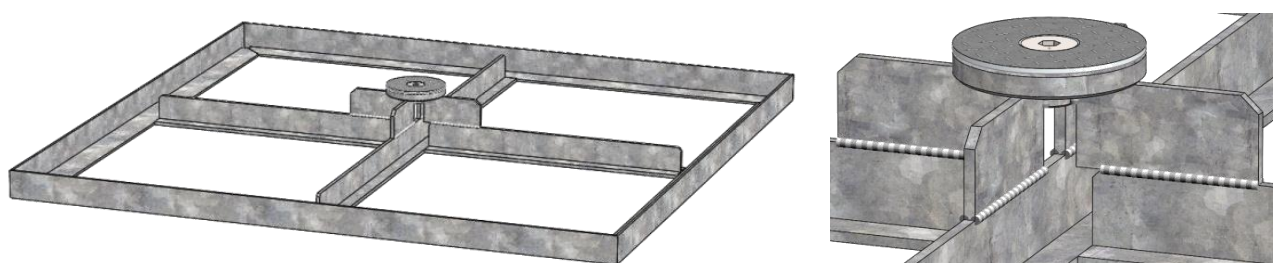
3-D views of SZ008



Combinable with pin and padlock, art. no. 200103.



3-D views of lower part SZ008 (352534) with top plate for winter protection.



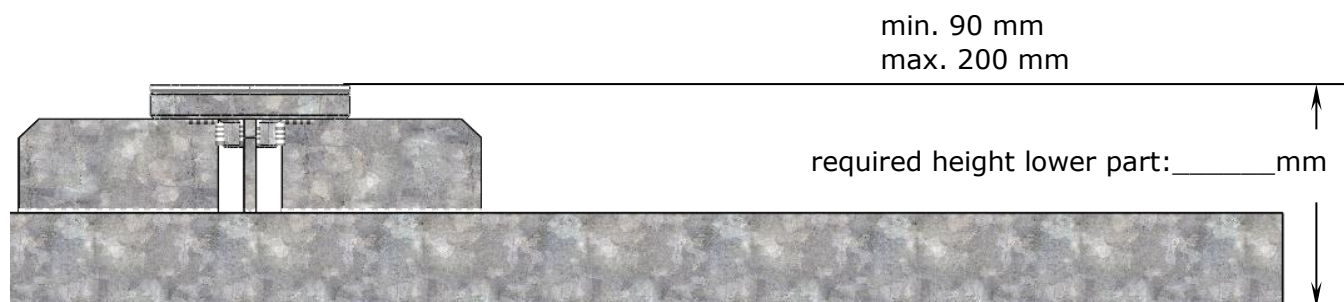
Full frame pedestal without placement hinge SZ008



This order sheet must be filled out completely and supplied to the MAY company before production.

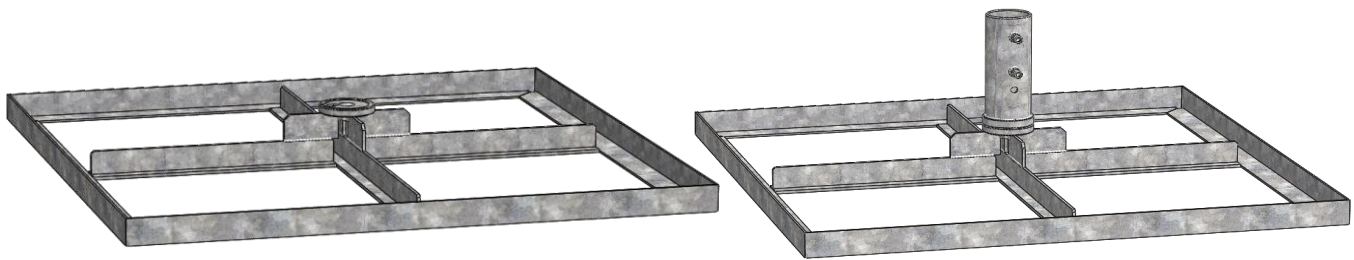
Lower part of SZ008 (200386) with top plate for winter protection.

All bases are custom-made. When ordering, please state the total height required, including winter top plate.



In case the „height of the lower part“ needs to be larger than 160 mm, option SZ208 must be used for stability reasons.

Customized versions with adjustable feet increase the height about approximately 25 mm.



When ordering, please fill in the fields below:

Quantity: _____ (mandatory)

(Dealer-) Name and address: _____ (optional)

(Dealer-) Commission: _____ (optional)

(Dealer-) Order number: _____ (optional)

(Dealer-) Name of clerk in charge: _____ (optional)

Order placed: _____ (mandatory)

Name

Date

Only for MAY Gerätebau GmbH:

Order number: _____