

Installation instructions SZ129 / SZ029

Customized dowel-anchored plate with upper anchor tube SZ118 for type SCHATTELLO. This option is not suited for use on sealed rooftops, balconies and terraces. Please opt for installation base SZ186 for these surfaces.

The following instructions include all information necessary for the installation and operation of this anchor tube. To avoid any misunderstanding we advise you to read these instructions carefully and then keep them for later reference.



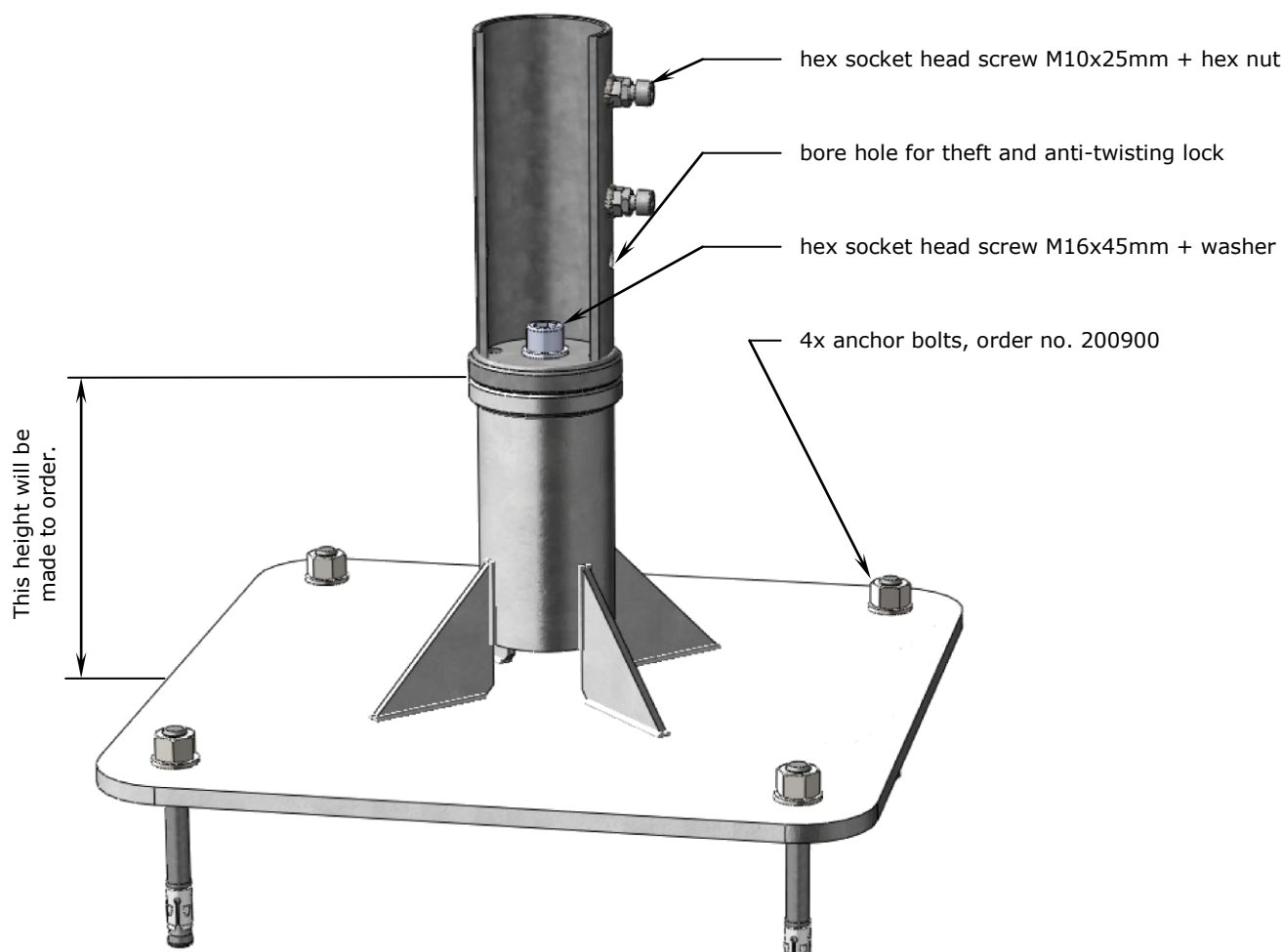
Caution

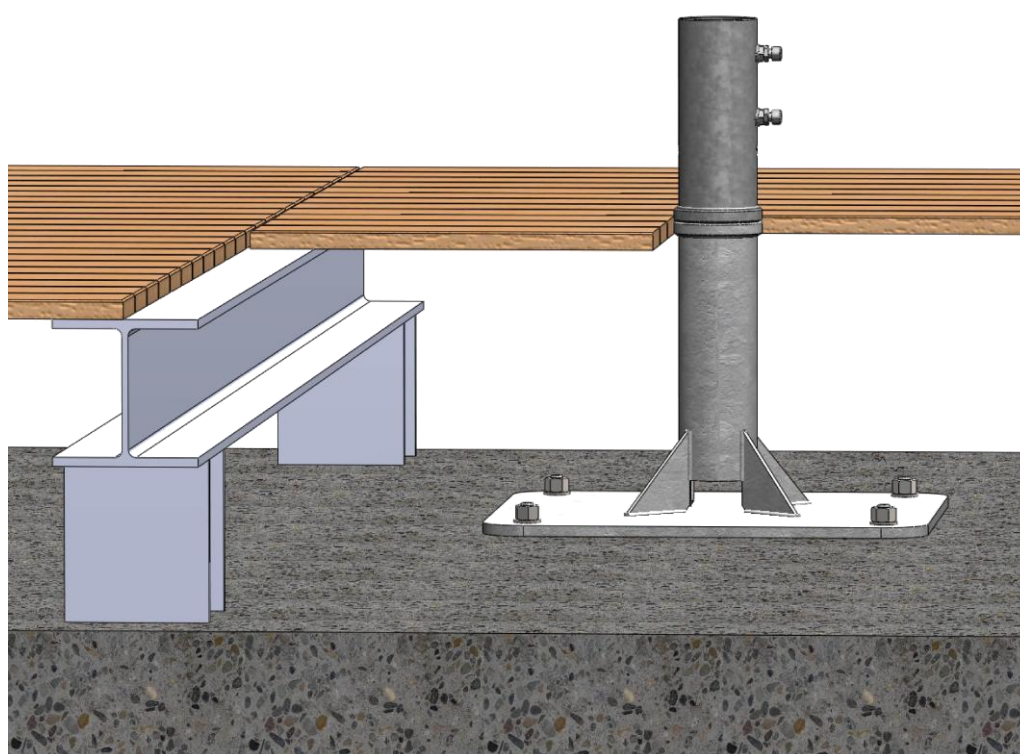
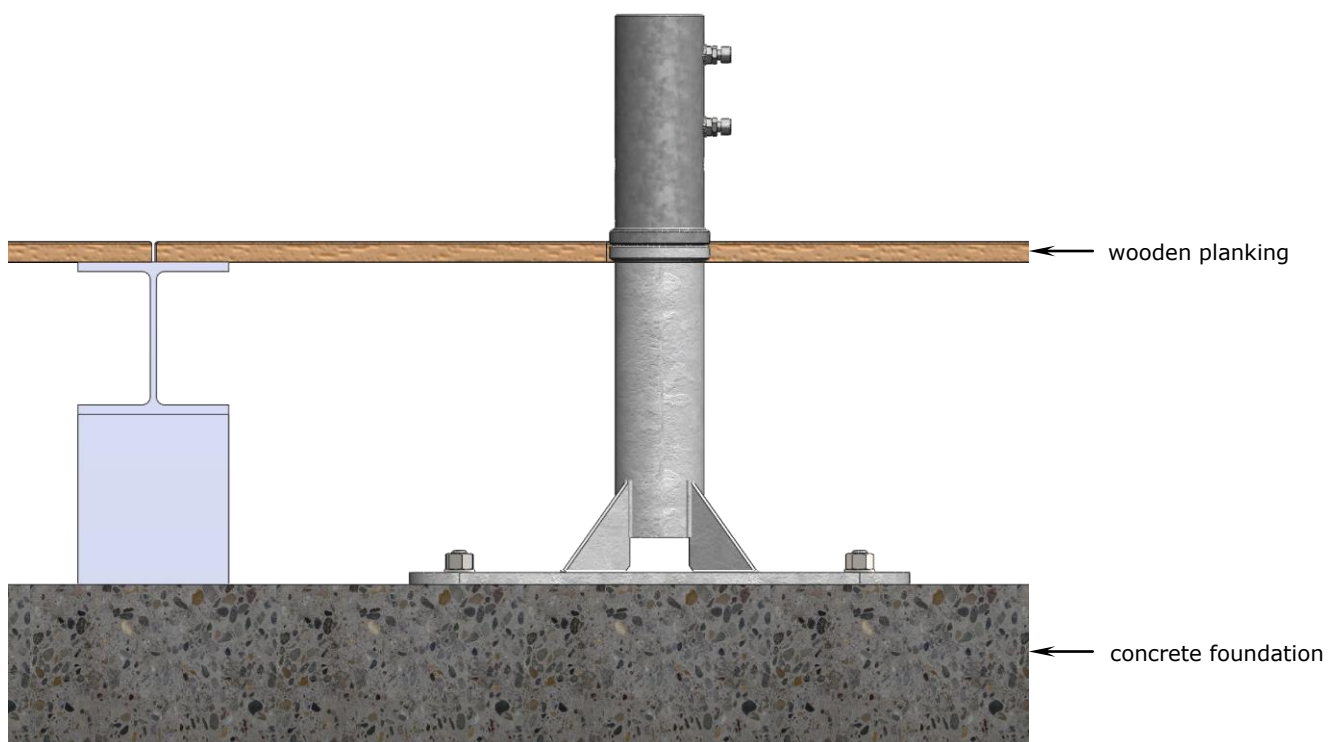
Non- observation of operating instructions can result in personal injuries or damage to property.

Please note that if these instructions are not observed, the manufacturer cannot assume any liability or guarantee.

- Always follow the safety regulations.
- Should you not understand any part of these operating instructions, please contact your MAY dealer.

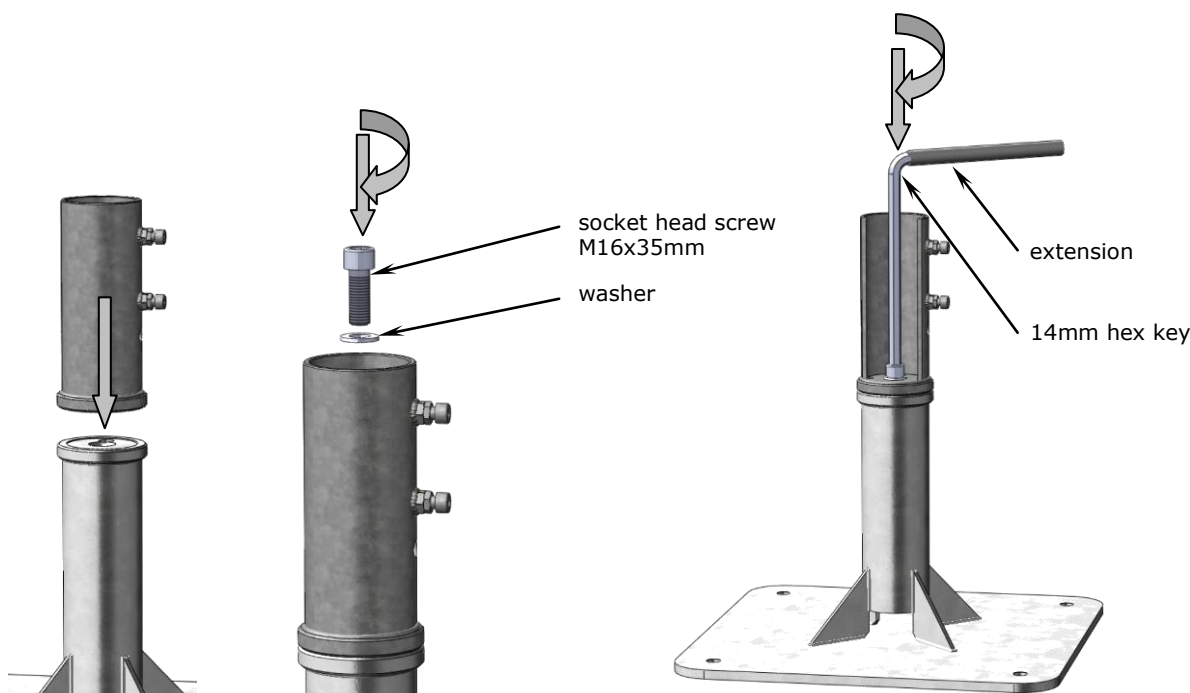
Diagram showing installation materials





Screw on upper part

1. Screw the upper anchor tube onto the lower tube (cf. illus.). Slip the 16mm washer on the M16x30mm socket head screw and tighten, using the enclosed 14mm hex key.



Caution

Screws that are not tightened correctly will work loose!

If screws are not tightened firmly enough, there will not be sufficient tensile force to trigger self-locking. If the screws are tightened too firmly and over-stressed, the screw connection may slacken.

- Tighten the screw manually using the enclosed hex key and extension. Exert as much force as possible. With the enclosed tools there is virtually no risk of over-stressing.
- The correct torque for a torque wrench is 210 Nm.

Determining the position of your SZ129 / SZ029

1. Allow sufficient space between parasols or between the wall of the house and the parasol.



Caution

Parasols that are located too close together wear sooner.

Parasols may sway slightly. If there is not enough space between them, they may touch and abrade or scour the canopy fabric at the spoke ends.

- Make sure that there is a clearance of approx. 20cm between the parasols (or between parasol and the wall of the house).

2. Set the SZ129 / SZ029 in vertical position.



Caution

Screws that are not tightened correctly will work loose.

If screws are not tightened firmly enough, there will not be sufficient tensile force to trigger self-locking. If the screws are tightened too firmly and over-stressed, the screw connection may slacken.

- Tighten the screw manually using the enclosed hex key and extension. Exert as much force as possible. With the enclosed tools there is virtually no risk of over-stressing.
 - The correct torque for a torque wrench is 210 Nm.
-

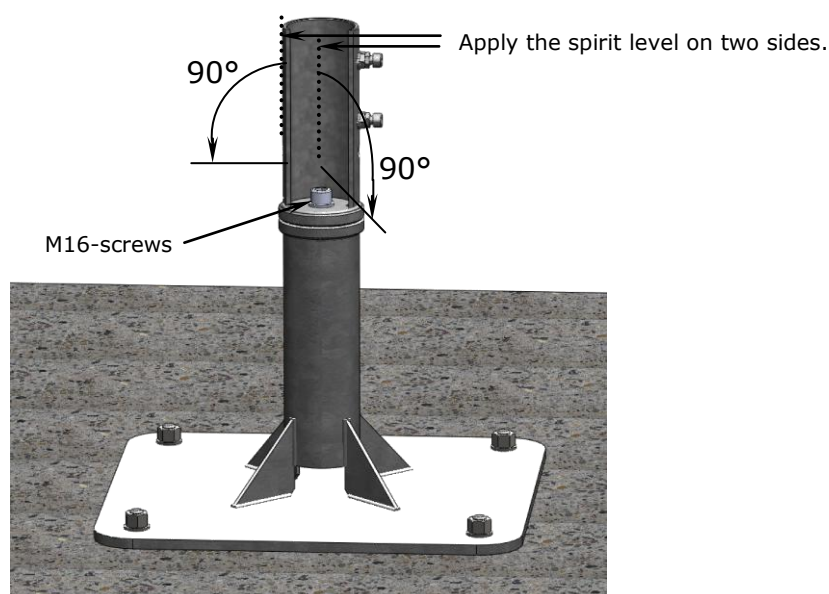


Attention

SZ129 / SZ029 must be screwed tight so that the parasol is in an upright position.

If the upper component of SZ129 / SZ029 is not in an absolutely vertical position the parasol will stand slanted. This would have a negative impact on the overall optical appearance of the parasols, in particular when several parasols are in a row and supposed to be aligned.

- Use a spirit level to align the SZ129 / SZ029. (cf. illustration)
-



- When setting the SZ129 / SZ029, make sure that the ground-level plate of the bottom component is (almost) flush (-3 mm) with the terrace floor surface.

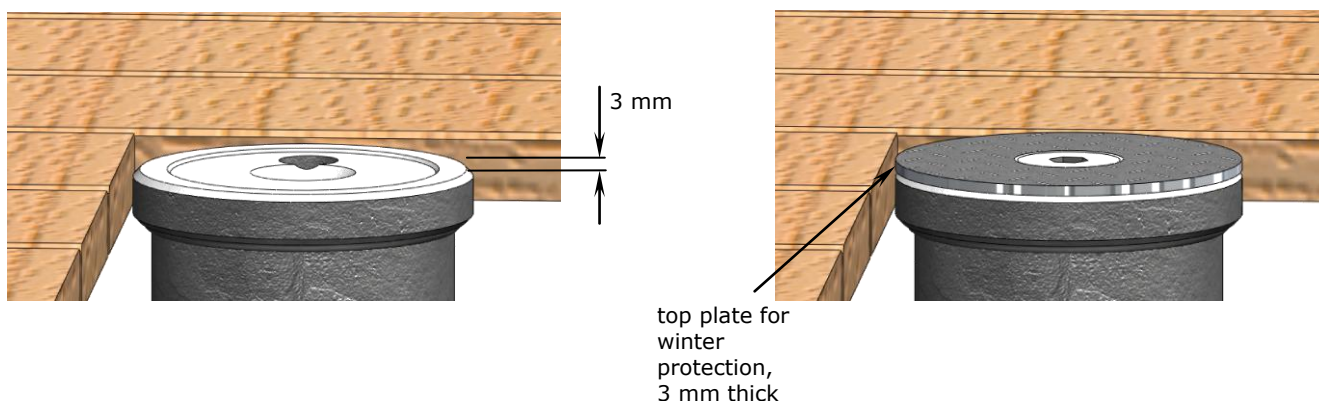


Attention

Avoid tripping hazard.

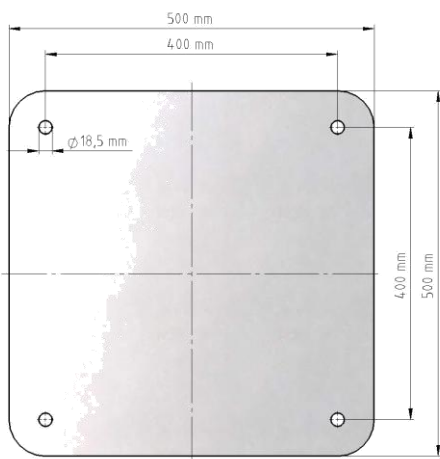
To ensure that the top winter plate (needed as a protective cover in winter when the upper anchor tube has been removed) is flush, the bottom component of SZ129 / SZ029 must be set 3 mm below the terrace surface. (cf. illustration) This checker plate for winter protection is 3 mm thick.

- Be sure to order the SZ129 / SZ029 bottom component with the correct height measurements so that it will fit properly between the top edge of the concrete foundation and the terrace floor surface. Please use our special MAY order form for custom-made production.
- In case of doubt, state a measurement that is slightly too short. Then this component can be jacked up with wedges. Measurements that are too long can, however, not be adjusted.



Dowelling the anchor plate

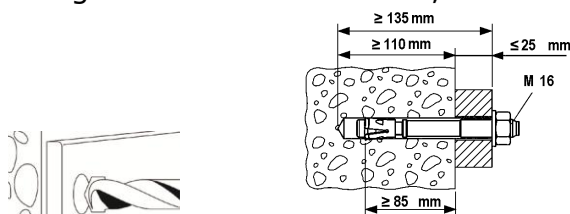
- Use a hammer drill to drive the 4 bore holes for dowels into the reinforced concrete surface. The drill pattern for the anchor plate is as shown below:



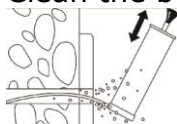
2. Screw the anchor plate onto the foundation. If you use anchor bolts provided by other manufacturers, please observe their instructions. Anchor bolts supplied by MAY should be mounted as follows:

Order No. 200900, threaded bolt with nut, stainless steel A4:

- a. Using a 16 mm hammer drill, drill a min. 110 mm-deep hole into the concrete.



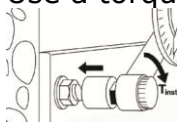
- b. Clean the bore hole with compressed air.



- Drive the anchor bolt into the hole. Before doing so, be sure to position the hex nut correctly. (The drive-in pin of the threaded bolt should jut out of the hex nut approx. 2 - 3 mm.)



- c. Use a torque wrench to tighten the nut with 110 Nm.



Danger

A falling parasol can cause serious or even fatal injury.

If the dimensions of the anchor bolts do not match the size of the umbrella, the parasol may fall and cause injuries.

- Always determine the appropriate bolt size with the help of a specialist.
- Anchor bolts of May company are approved for cracked and non-cracked concrete C20/25 to C50/60. Also suitable for concrete C12/15 and natural stone with dense structure.

Storage/Dismounting

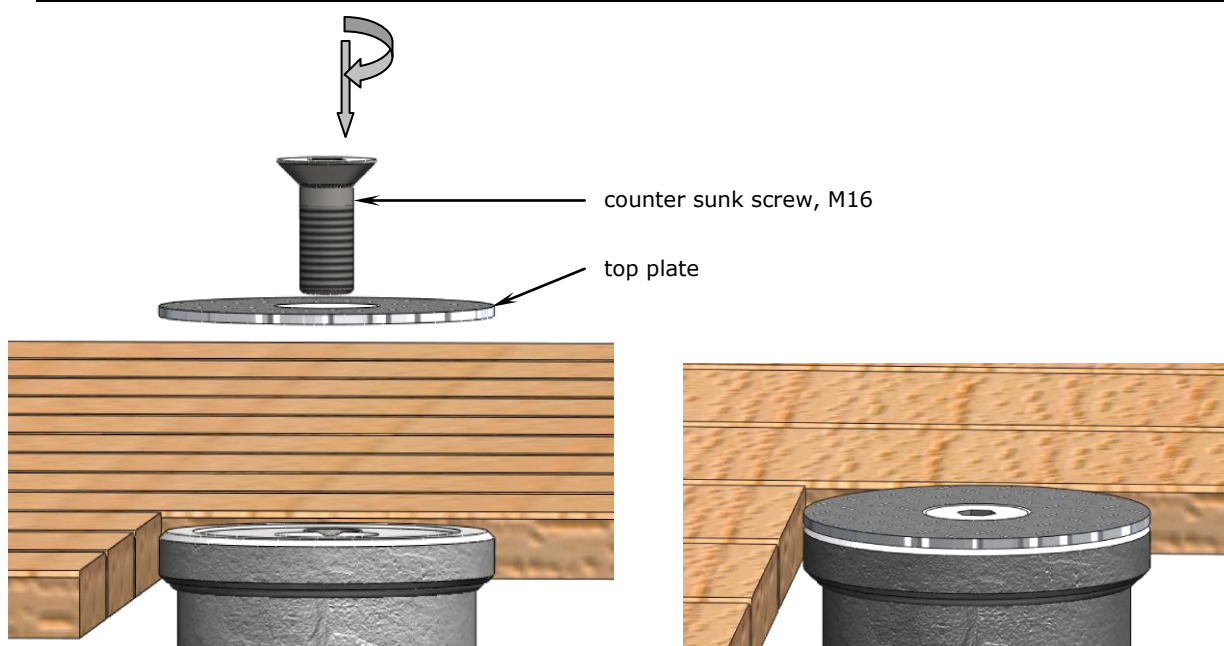
1. Lift the sunshade out of the anchor tube.
2. Remove the upper anchor tube completely by screwing it off.
3. Screw the top plate onto the lower anchor tube. (cf. illus.)



Caution

The thread can get damaged.

When the top plate is not on the lower anchor tube, sand may get washed into the flanks of the thread. As sand is harder than steel, the thread may get damaged when the screw is turned.



4. If you have two or more parasols, it is advisable to mark them and their accessories (e.g. with metal-stamped numerals or using a waterproof marker) as soon as they have been dismantled (e.g. for winter storage).

Marking saves a lot of time and helps to keep things in order!

Tip

If clearly marked, each parasol can easily be assigned to its proper location and re-erected parallel to the wall of the house or next to the others.

- For clear and easy later assignment use the same number to mark the centre pole, the upper anchor tube and the lower anchor tube. For example, for parasol No. 1, all three parts should carry number 1, all three parts of parasol No. 2 should be marked with a 2, etc.

5. Grease the screws regularly to prevent them from rusting.

Project management

All persons involved should discuss this installation option on site. If these instructions are provided to everyone during the planning period, arguments can be harmonised and therefore unnecessary costs for incorrect planning can be saved. In case this installation option is found not to be suitable, you may select another option from the MAY program. Customized options are available upon request depending on complexity.

Following parties may be involved:

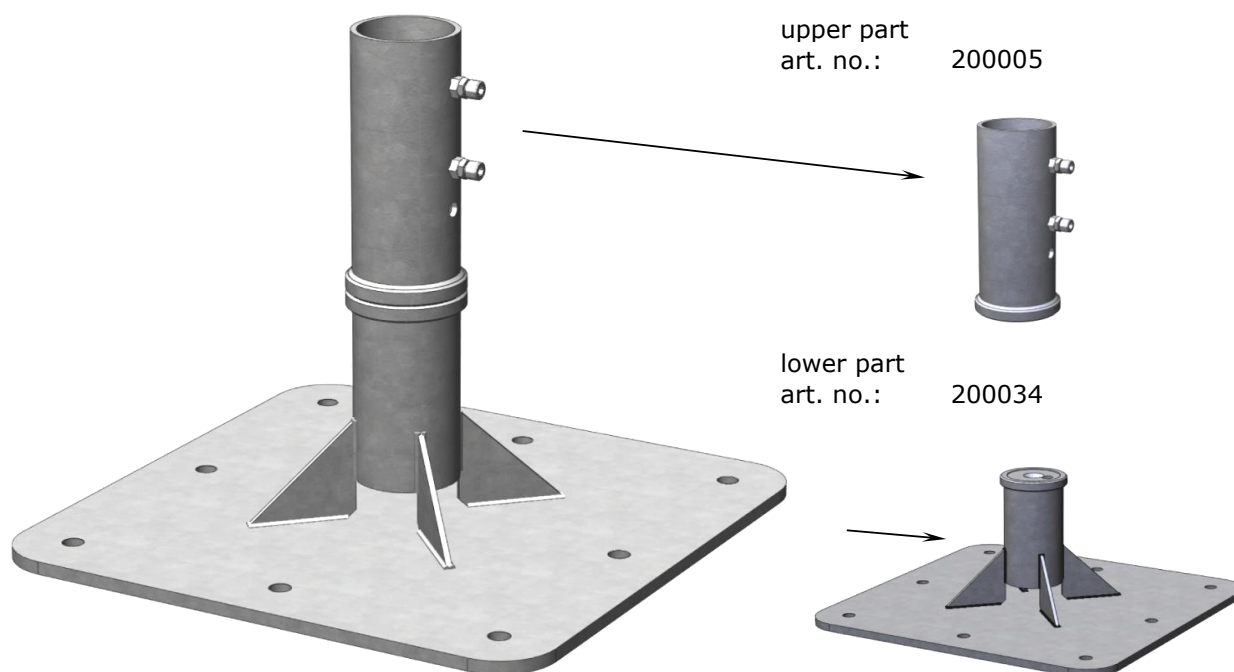
1. House owner: Approval of project, assumption of costs, order placement, etc.
2. Leaseholder / gastronome: Is the positioning of the parasols suitable for the seating, assumption of costs, etc.
3. Architect: General legal planning, positioning, statics of the flat roof (dynamic and static load by weight and wind), control and supervision of the workmen, etc.
4. Workmen: Roofer clarifies and mounts the installation option, pay attention to waterproofing sealing, setting heavy-duty anchor bolts, etc.
5. Electrician: Defines electrical connection, clarifies cable and control, etc.

Dowel-anchored plate without placement hinge, SZ129

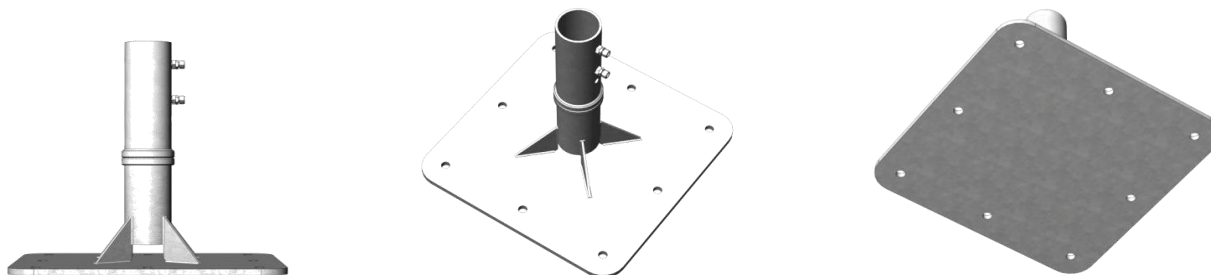


This order sheet must be filled out completely and supplied to the MAY company before production.

art. no. SZ129: 2 pieces, screw-off upper part, fits for pole \varnothing 76 mm



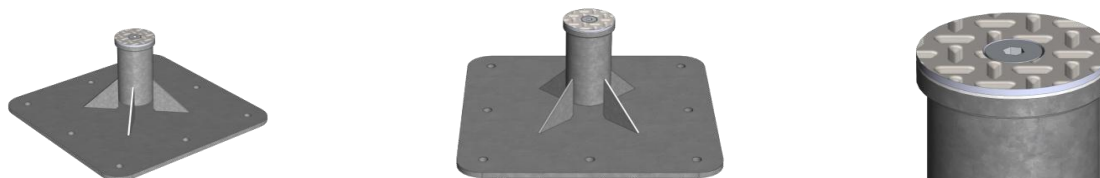
3-D views of SZ129



Combinable with pin and padlock, art. no. 200103.



3-D views of 200034



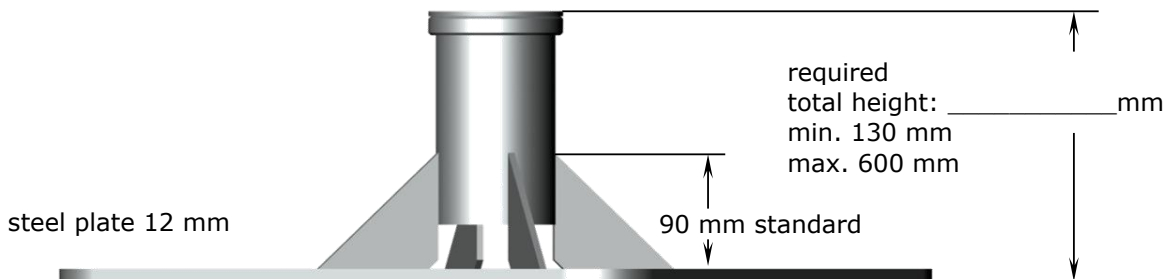
Dowel-anchored plate without placement hinge, SZ129



This order sheet must be filled out completely and supplied to the MAY company before production.

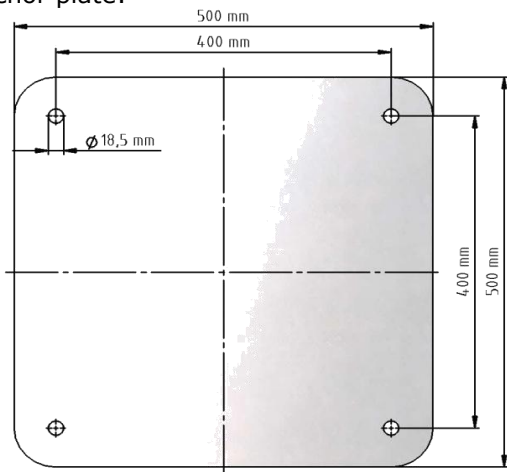
Base of SZ129 (200034) with top plate for winter protection.

All bases are custom-made. When ordering, please state the total height required, including winter top plate.



In case the „height of the lower part“ needs to be lower than 130 mm, option SZ029 must be used.

anchor plate:



When drilling the heavy-duty anchor bolts into the designated site position, use the anchor plate as a drilling jig. You will need 4 heavy-duty anchor bolts. Available in stainless steel A4, art. no. 200900.

When ordering, please fill in the fields below:

Quantity: _____ (mandatory)

(Dealer-) Name and address: _____ (optional)

(Dealer-) Commission: _____ (optional)

(Dealer-) Order number: _____ (optional)

(Dealer-) Name of clerk in charge: _____ (optional)

Order placed: _____ (mandatory)

Name

Date

Only for May Gerätebau GmbH:

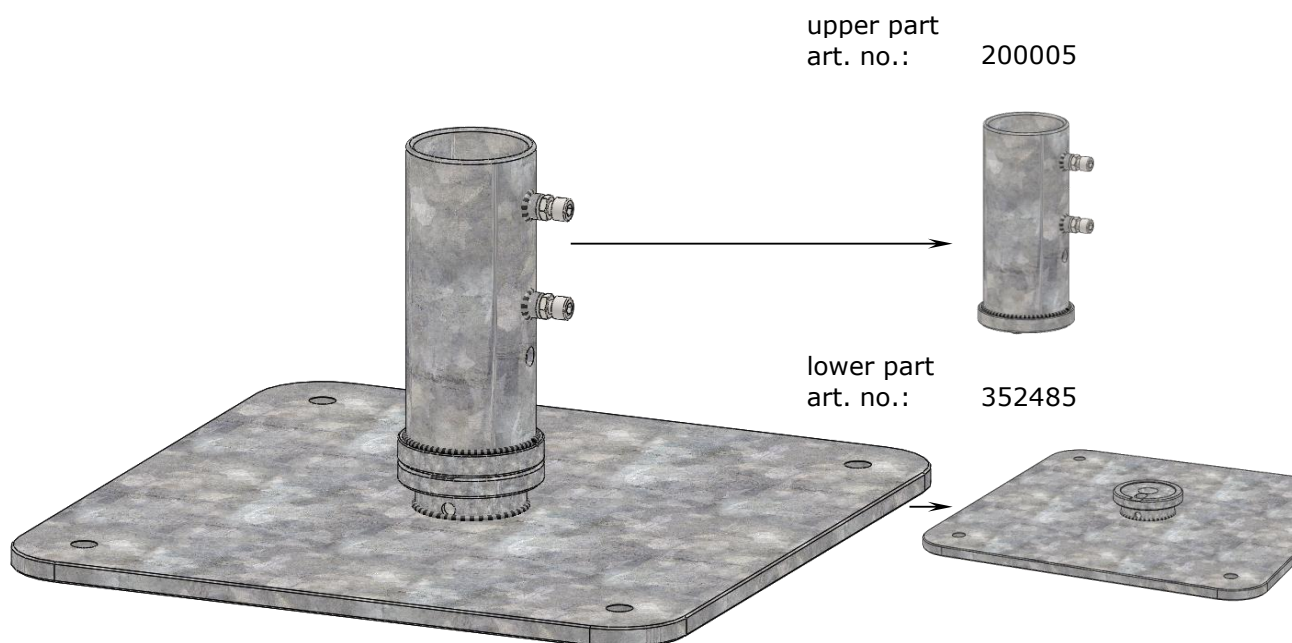
Order number: _____

Dowel-anchored plate without placement hinge, SZ029

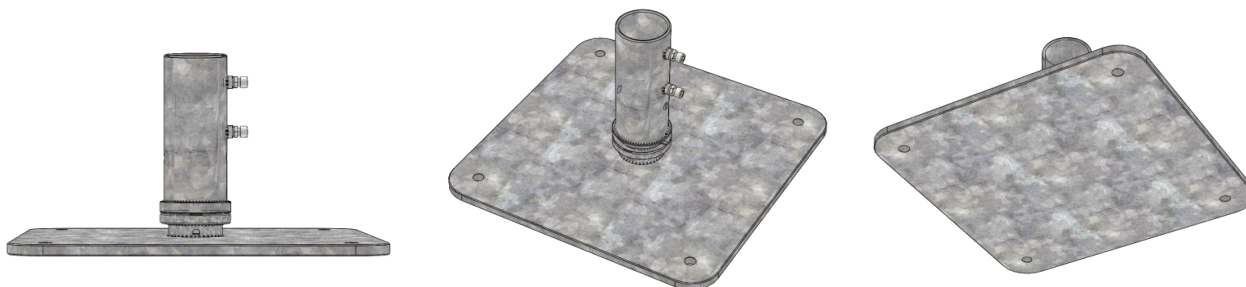


This order sheet must be filled out completely and supplied to the MAY company before production.

art. no. SZ029: 2 pieces, screw-off upper part, fits for pole \varnothing 76 mm



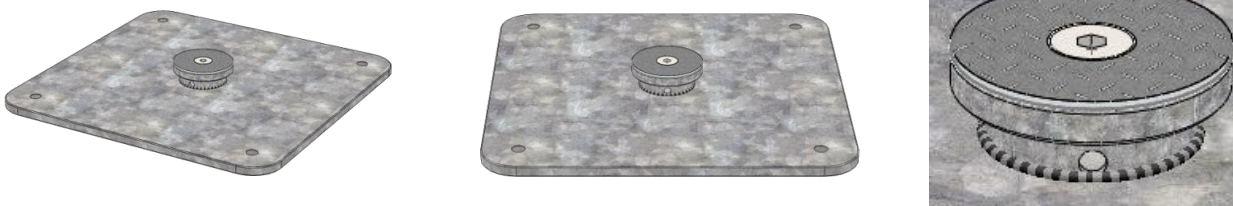
3-D views of SZ029



Combinable with pin and padlock, art. no. 200103.



3-D views of 352485



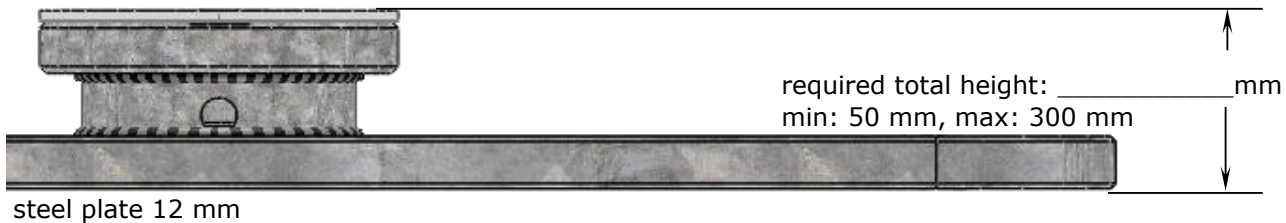
Dowel-anchored plate without placement hinge, SZ029



This order sheet must be filled out completely and supplied to the MAY company before production.

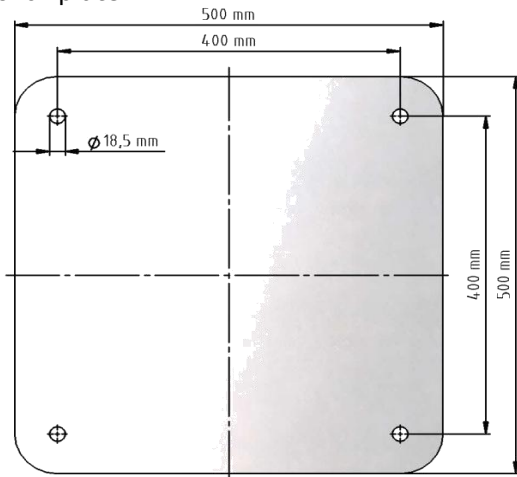
Base of SZ029 (352485) with top plate for winter protection.

All bases are custom-made. When ordering, please state the total height required, including winter top plate.



In case the „height of the lower part“ needs to be larger than 130 mm, option SZ129 must be used.

anchor plate:



When drilling the heavy-duty anchor bolts into the designated site position, use the anchor plate as a drilling jig. You will need 4 heavy-duty anchor bolts. Available in stainless steel A4, art. no. 200900.

When ordering, please fill in the fields below:

Quantity: _____ (mandatory)

(Dealer-) Name and address: _____ (optional)

(Dealer-) Commission: _____ (optional)

(Dealer-) Order number: _____ (optional)

(Dealer-) Name of clerk in charge: _____ (optional)

Order placed: _____ (mandatory)

Name

Date

Only for May Gerätebau GmbH:

Order number: _____