

Installation instructions DMZ139

Base plate for FILIUS, not suited for MEZZO or DACAPO.

The following instructions include all information necessary for the installation and operation of this base plate. To avoid any misunderstanding we advise you to read these instructions carefully and then keep them for later reference.



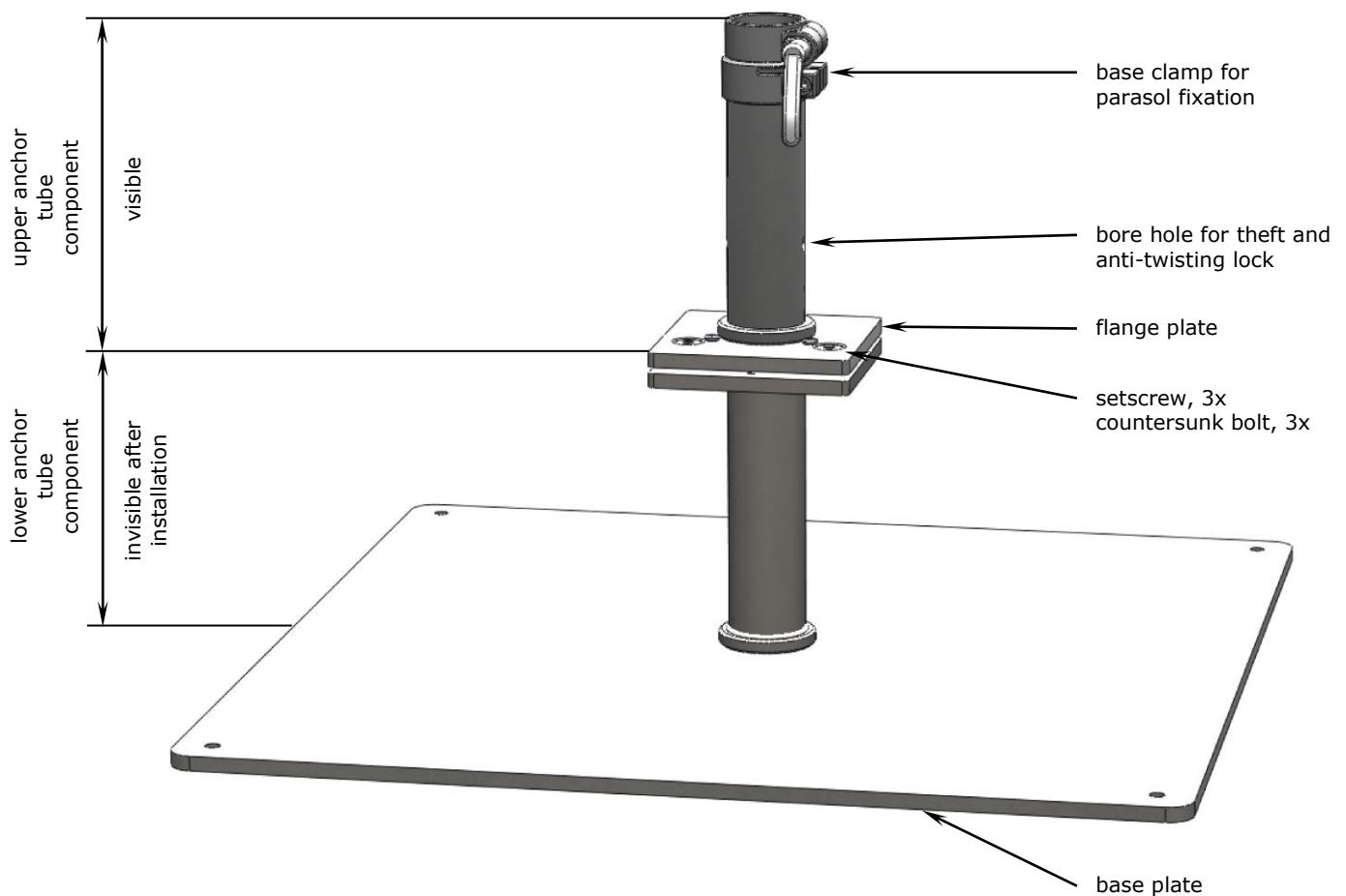
Caution

Non- observation of operating instructions can result in personal injuries or damage to property.

Please note that if these instructions are not observed, the manufacturer cannot assume any liability or guarantee.

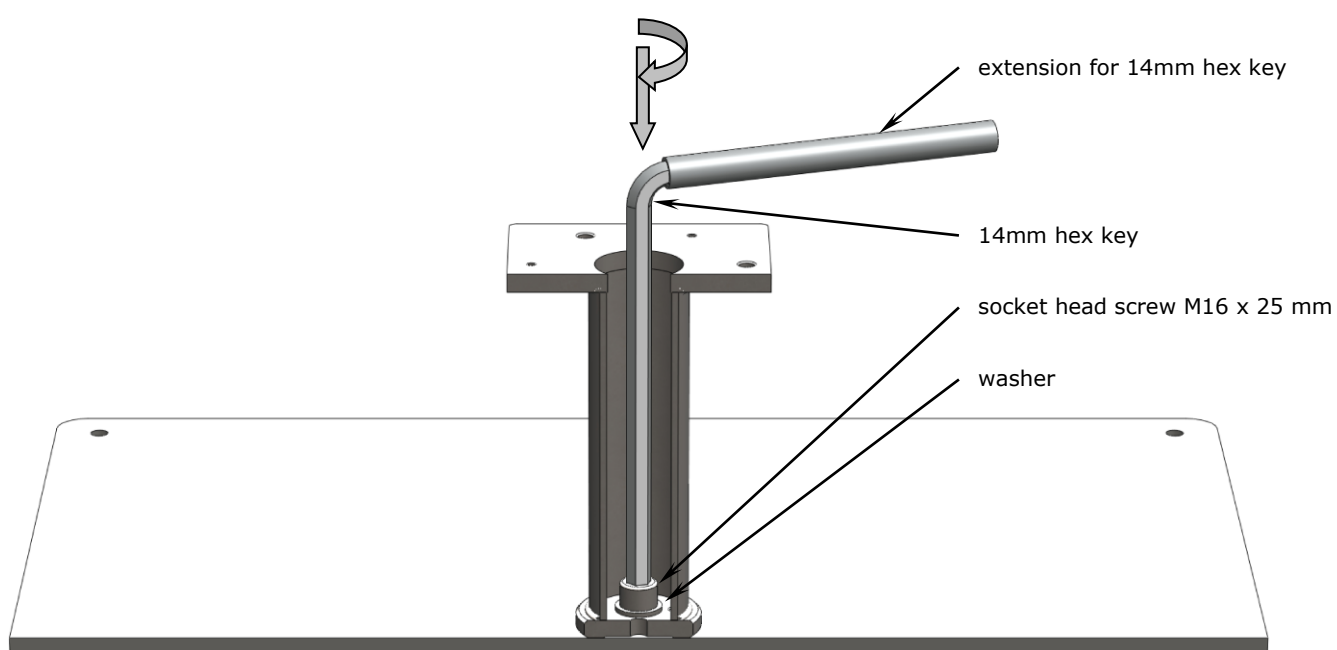
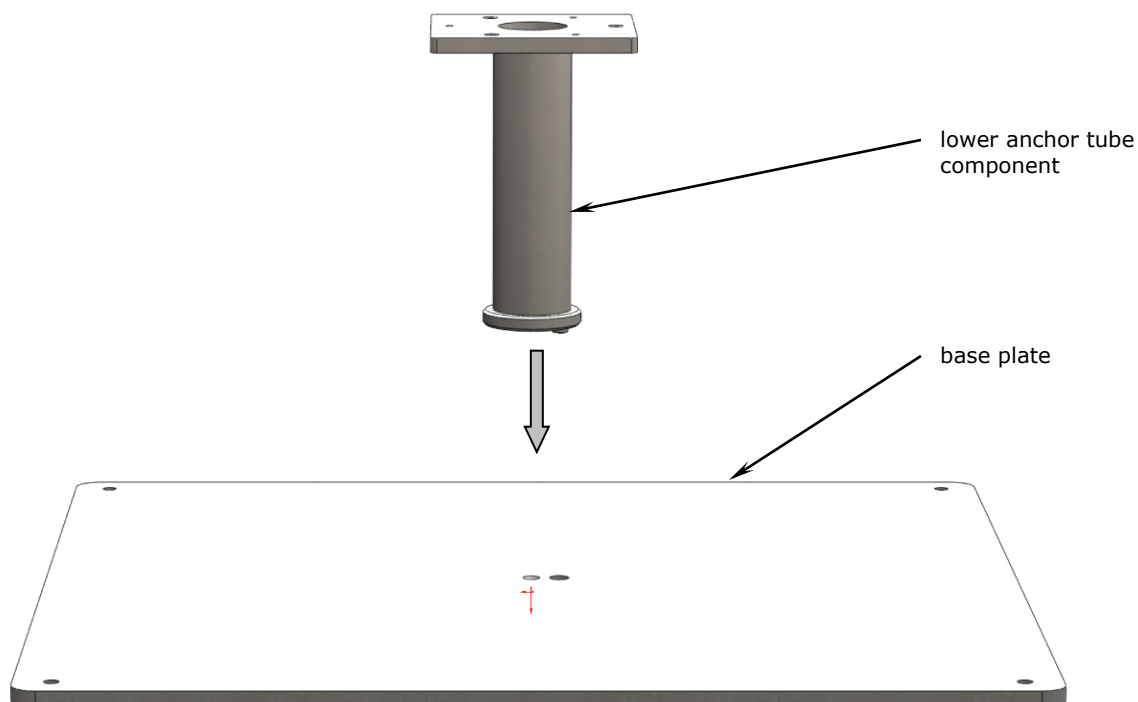
- Always follow the safety regulations.
- Should you not understand any part of these operating instructions, please contact your MAY dealer.

Diagram showing installation materials



Fastening the base plate

1. Fasten the lower anchor tube component to the base plate (cf. illustration). To do so, slip the 16 mm washer on the M16 socket head screw and tighten the screw, using the 14 mm hex key and the extension supplied.





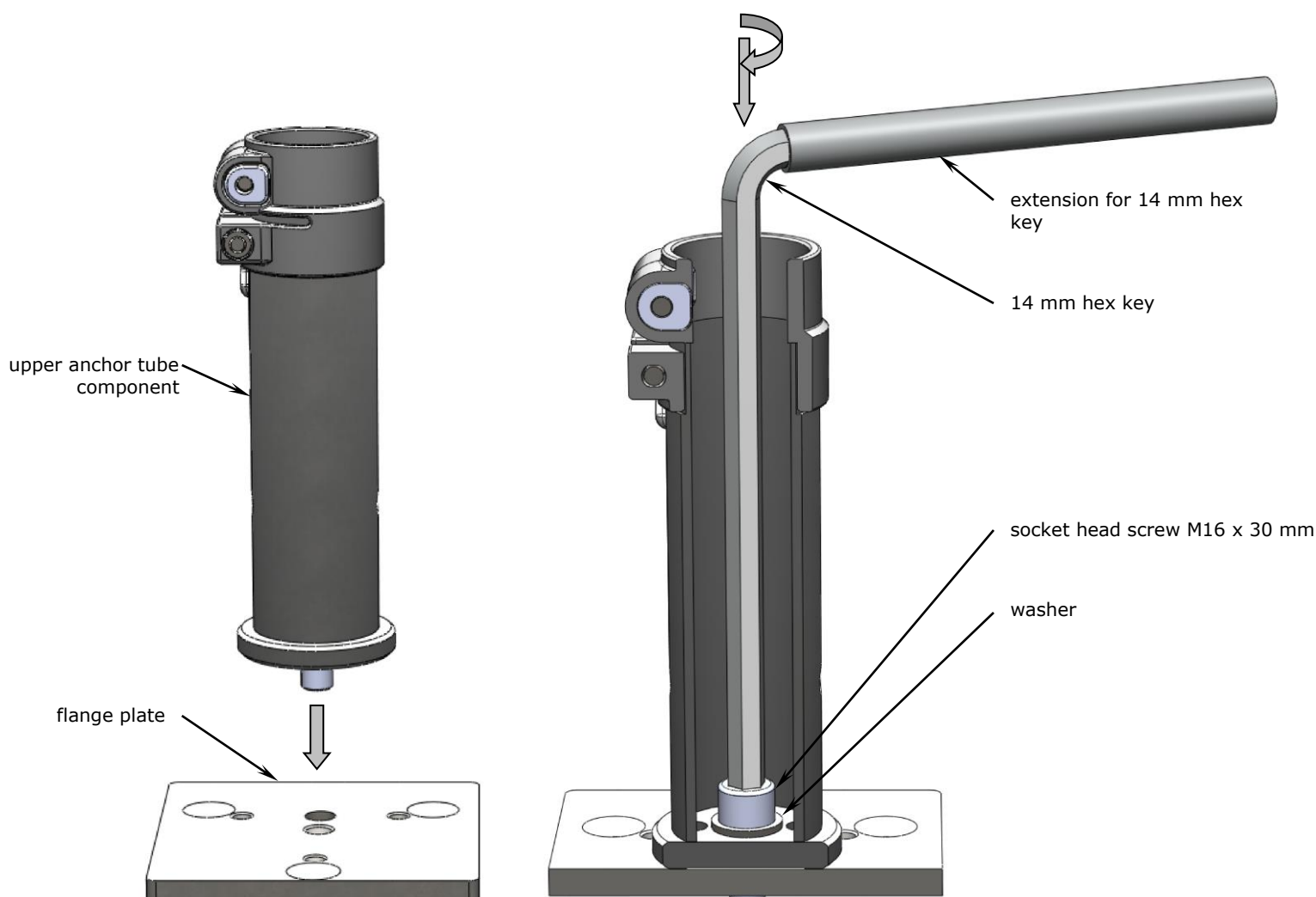
Caution

Screws that are not tightened correctly will work loose.

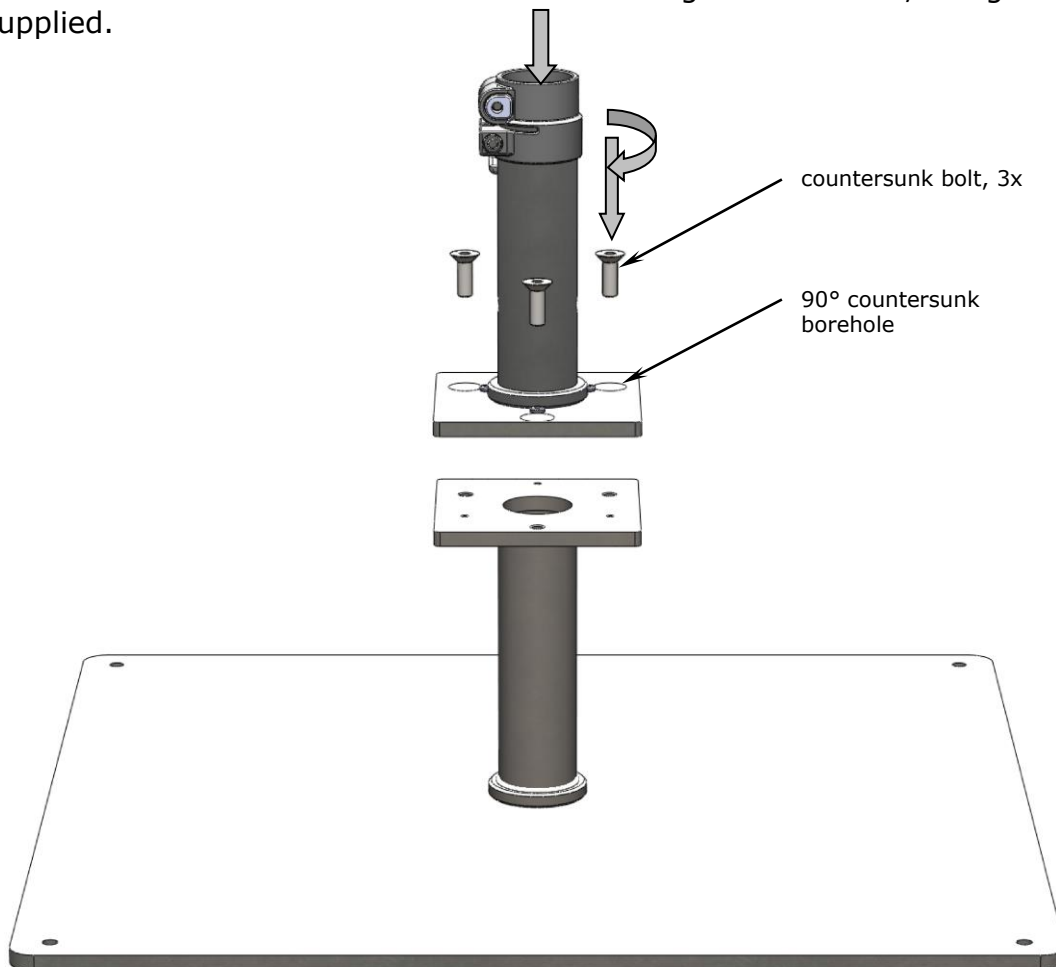
If screws are not tightened firmly enough, there will not be sufficient tensile force to trigger self-locking. If the screws are tightened too firmly and over-stressed, the screw connection may slacken.

- Tighten the screw manually using the enclosed hex key and extension. Exert as much force as possible. With the enclosed tools there is virtually no risk of over-stressing.
- The correct torque for the torque wrench is 210 Nm.

2. Fasten the upper anchor tube component to the flange plate (cf. illustration). To do so, slip the 16 mm washer on the M16 socket head screw and tighten the screw, using the 14 mm hex key and the extension supplied.



3. Screw the two components together (cf. illustration). To do so, place the 3 countersunk bolts into the 90° countersunk boreholes and tighten the bolts, using the 8 mm hex key supplied.



Installing the base plate

1. Allow sufficient space between sunshades or between the wall of the house and the sunshade.



Caution

Sunshades that are located too close together wear sooner.

Sunshades may sway slightly. If there is not enough space between them, they may touch and abrade or scour the canopy fabric at the spoke ends.

- Make sure that there is a clearance of approx. 15 – 20 cm between the sunshades (or between sunshade and the wall of the house).

2. We would like to stress that uneven patios are no problem for us. We are able to compensate any unevenness of the ground by adjusting the height of each individual sunshade. Extra length upper anchor tubes are available at 10 cm gradation and can be adjusted and accommodated on location.

3. When setting the DMZ139, make sure that the ground-level plate of the lower anchor tube component incl. flange and cover plate is flush with the terrace floor surface. Place the base plate in the required location.

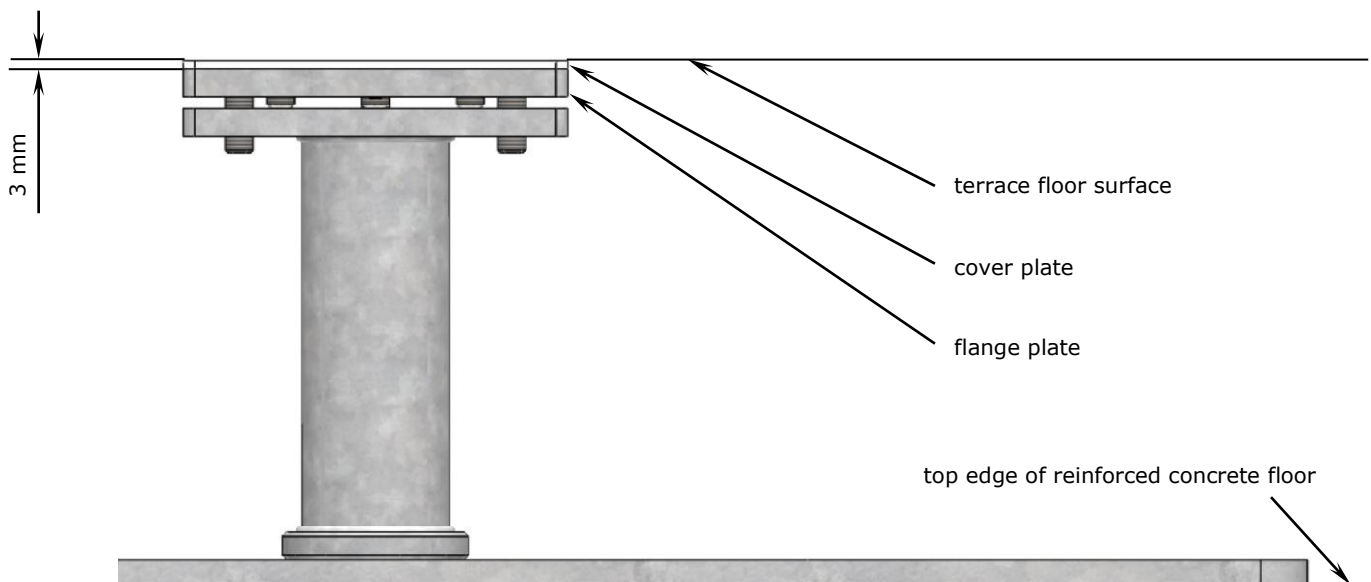


Attention

Avoid tripping hazard.

To ensure that the cover plate (needed as a protective cover in winter when the upper anchor tube has been removed) is flush, the lower anchor tube component must be set 3 mm below the terrace surface (cf. illustration). This difference of 3 mm corresponds to the space needed for the 3 mm - thick checker plate for winter protection.

- Be sure to order the lower component with the correct height measurements so that it will fit properly between the top edge of the concrete foundation and the terrace floor surface. Please use our special MAY order form for custom-made production.
- In case of doubt, state a measurement that is slightly too short. Then this component can be jacked up with wedges. Measurements that are too long can, however, not be adjusted.
- The base plate must be sufficiently underpinned so that it lies absolutely flat and cannot sway when wind arises.
- If the base plate is properly underpinned, surface pressure will ensure that the separation layer (bitumen layer) under the plate will not be damaged.
- For height measurements take into consideration that the cover plate needs 3 mm.



4. As a rule, the reinforced concrete floor is not completely level, so that the umbrella will not necessarily stand upright. This means that the upper anchor tube must be aligned with the help of the three setscrews.



Attention

In order to ensure that the upper anchor tube and the sunshade are in a vertical position, the flange plate must be aligned horizontally.

Align the upper anchor tube with the help of the three setscrews.

- Remove the wedge base clamp.
- Loosen the countersunk bolts.
- In turns, apply the spirit level on two sides and adjust the alignment with the setscrews.
- When the upper anchor tube is in a completely vertical position, tighten the countersunk bolts and replace the wedge base clamp.

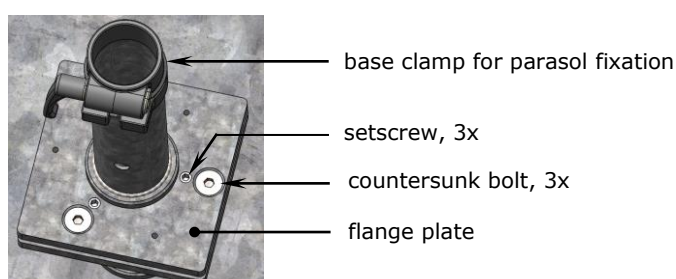
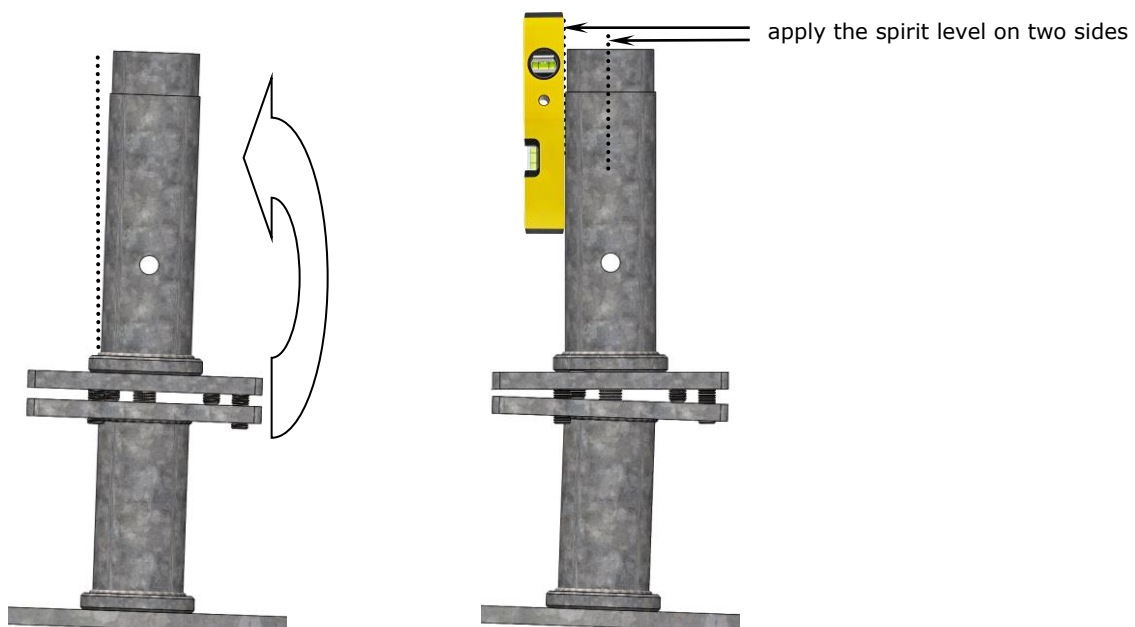


Caution

Screws that are not tightened correctly will work loose.

If screws are not tightened firmly enough, there will not be sufficient tensile force to trigger self-locking. If a screw is tightened too firmly and over-stressed, the screw connection may slacken.

- Tighten the M12 countersunk bolts manually using the enclosed hex key. Exert as much force as possible. With the enclosed tool there is virtually no risk of overstressing.
- The correct torque for the torque wrench is 74 Nm.



Storage / Dismounting

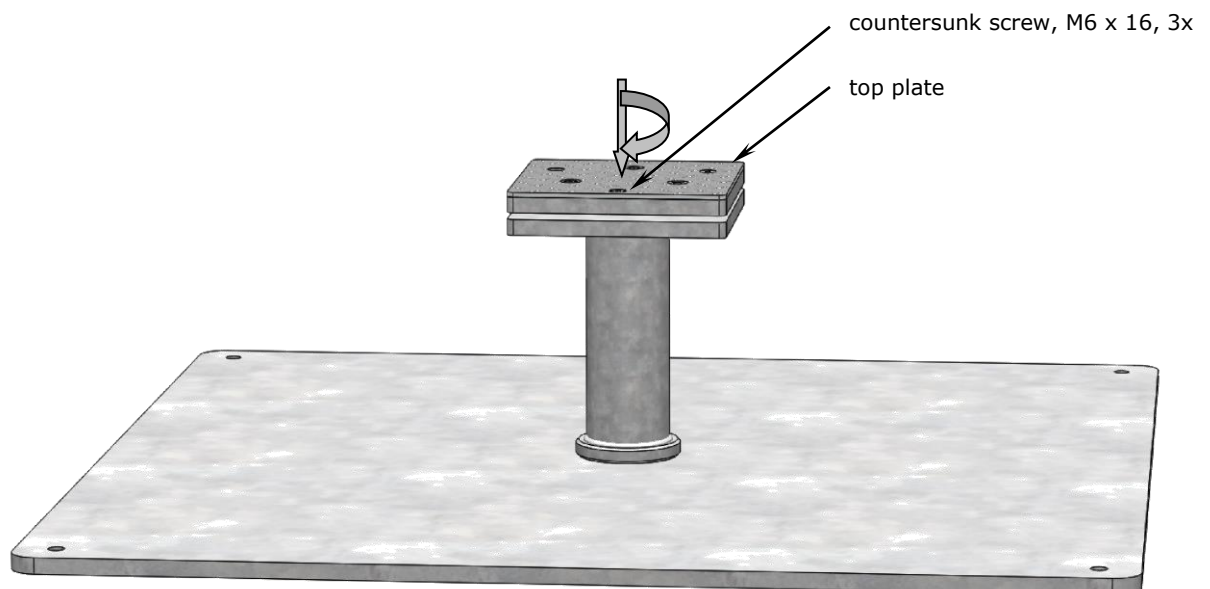
1. Lift the sunshade out of the anchor tube.
2. Screw off the upper anchor tube.
3. Screw the top plate onto the lower anchor tube. (cf. illustration)



Caution

The thread can get damaged.

When the top plate is not on the lower anchor tube, sand may get washed into the flanks of the thread. As sand is harder than steel, the thread may get damaged when the screw is turned.



4. If you have two or more sunshades, it is advisable to mark them and their accessories (e.g. with metal-stamped numerals or using a waterproof marker) as soon as they have been dismantled (e.g. for winter storage).

Marking saves a lot of time and helps to keep things in order.

Tip

If clearly marked, each sunshade can easily be assigned to its proper location and re-erected parallel to the wall of the house or next to the others.

- For clear and easy later assignment use the same number to mark the centre pole, the upper anchor tube and the lower anchor tube. For example, for sunshade No. 1, all three parts should carry number 1, all three parts of sunshade No. 2 should be marked with a 2, etc.
-

5. Grease the screws regularly to prevent them from rusting.

Project management

All persons involved should discuss this installation option on site. If these instructions are provided to everyone during the planning period, arguments can be harmonised and therefore unnecessary costs for incorrect planning can be saved. In case this installation option is found not to be suitable, you may select another option from the MAY program. Customized options are available upon request depending on complexity.

Following parties may be involved:

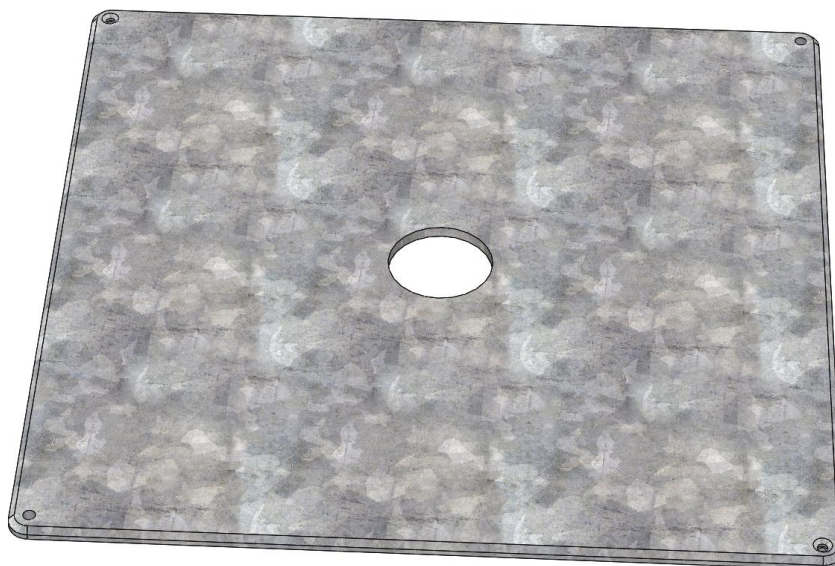
1. House owner: Approval of project, assumption of costs, order placement, etc.
2. Leaseholder / gastronome: Is the positioning of the parasols suitable for the seating, assumption of costs, etc.
3. Architect: General legal planning, positioning, statics of the flat roof (dynamic and static load by weight and wind), control and supervision of the workmen, etc.
4. Workmen: Roofer clarifies and mounts the installation option, pay attention to waterproofing sealing, setting heavy-duty anchor bolts, etc.
5. Electrician: Defines electrical connection, clarifies cable and control, etc.

Add-on weight plate art. no. 351185

780 x 780 x 12 mm, for MEZZO, DACAPO and FILIUS

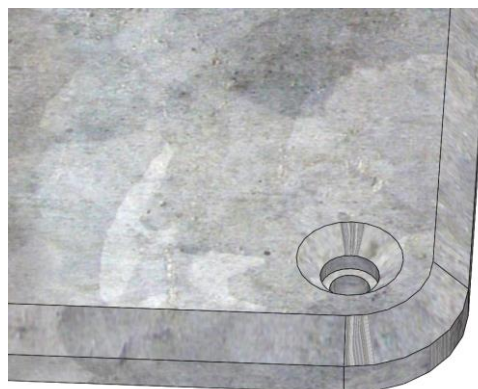
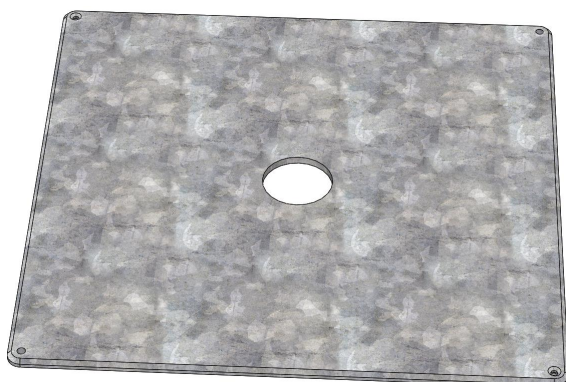
Suitable for base plates DMZ271 and DMZ139, for retrofit.

By combining DMZ271 or DMZ139 with the add-on weight plate (art. no. 351185) sufficient weight is reached to be used with MEZZO and DACAPO.

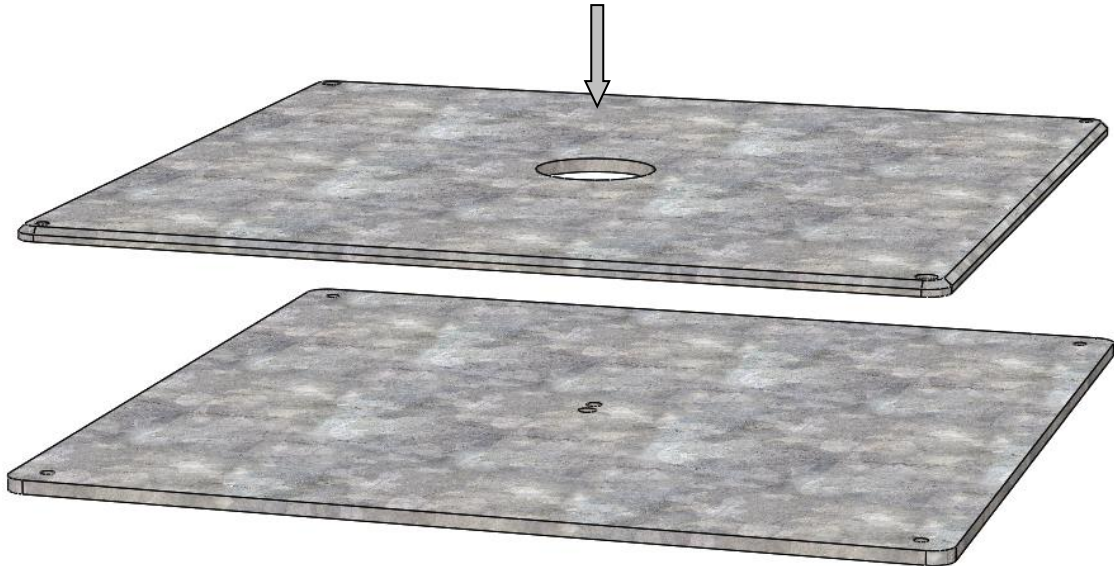


Assembly

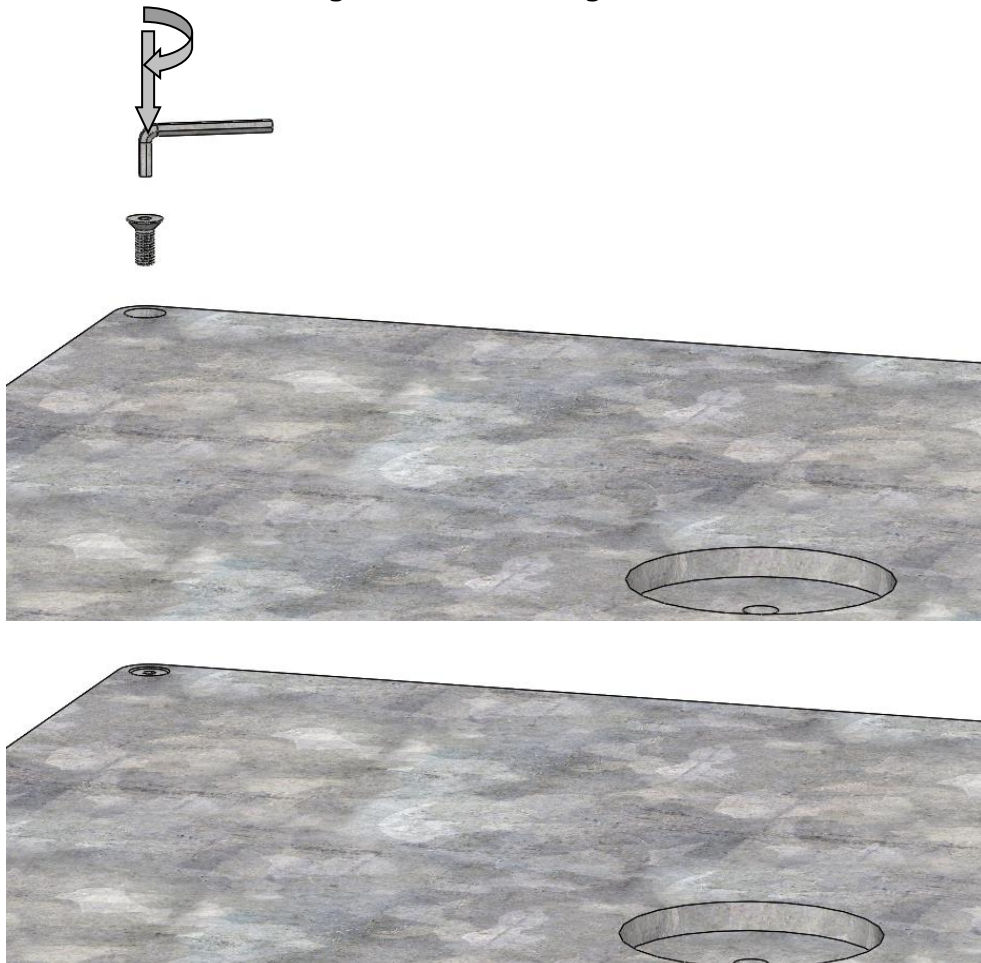
1. Position the add-on weight plate with the countersinking and chamfers facing up.



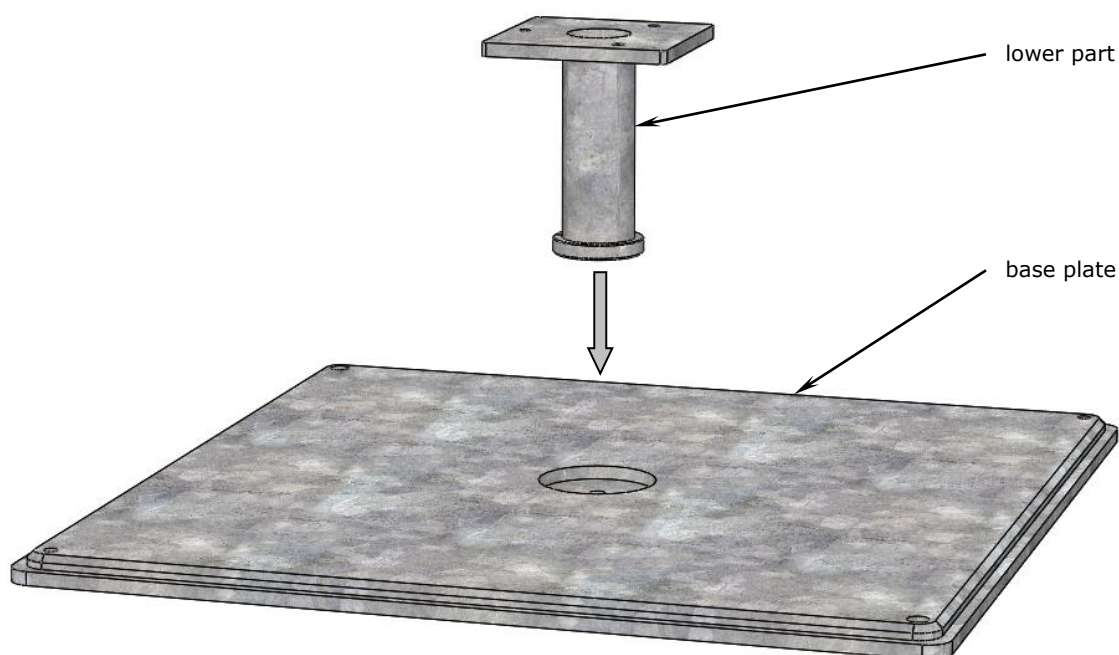
2. Place the add-on weight onto the base plate centrally. Turn the add-on weight plate so that the edges are aligned parallel.



3. Use a 5mm hex key to tighten the 2 countersunk screws into 2 opposite corners. This secures the add-on weight from twisting.



4. Follow these instructions starting at page 2 for assembling the installation option.

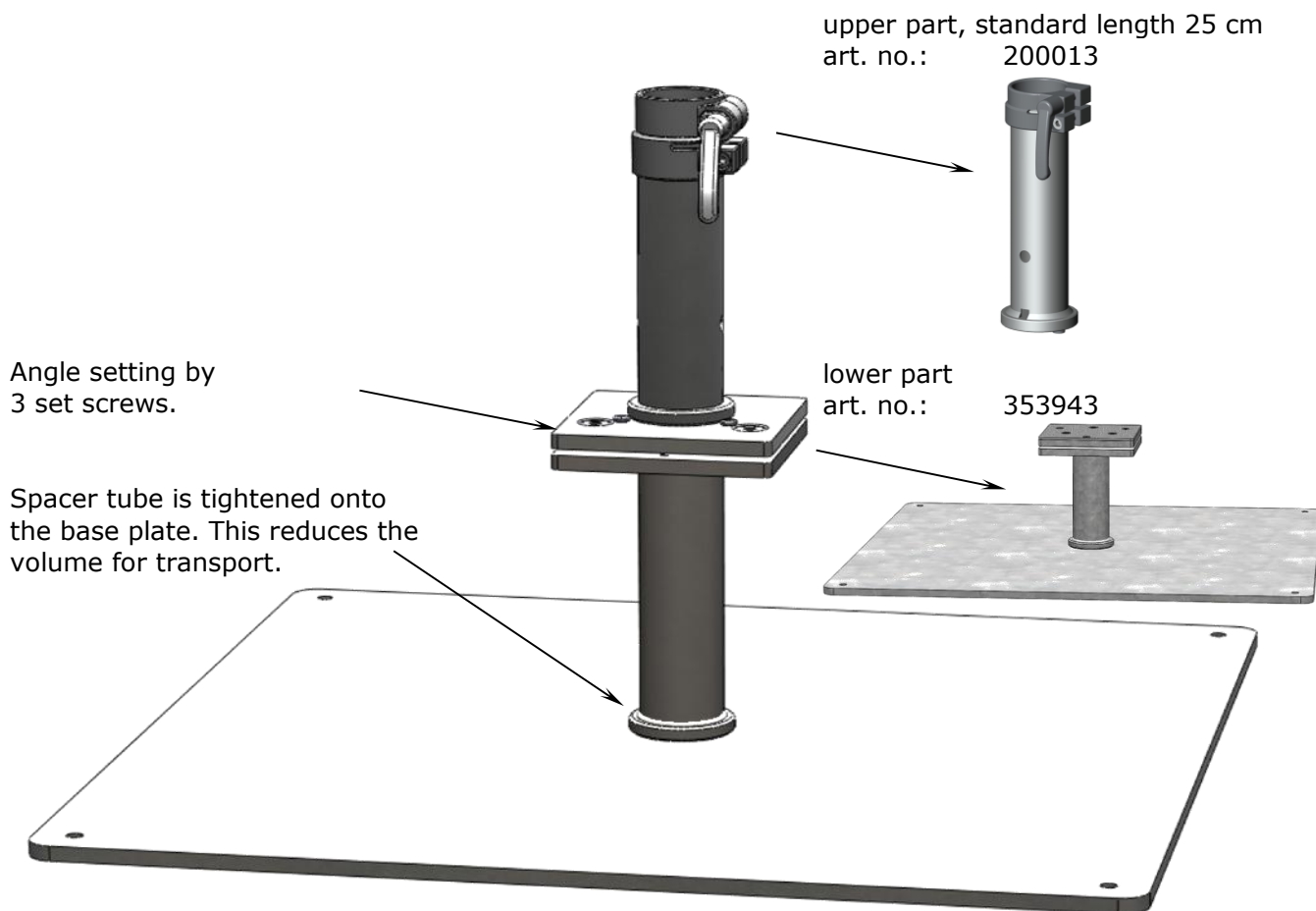


Freestanding base plate 800x800x12mm DMZ139

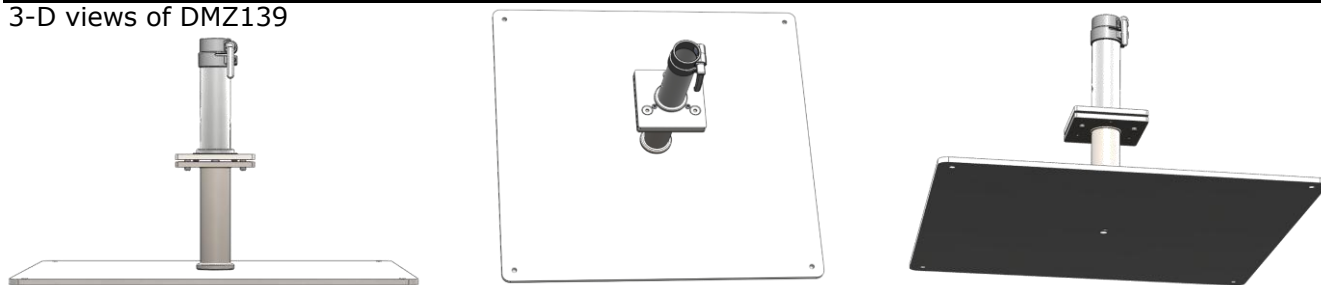


This order sheet must be filled out completely and supplied to the MAY company before production.

Art. no. DMZ139: 2 pieces, screw-off upper part, fits for pole \varnothing 55 mm



3-D views of DMZ139



Combinable with pin and padlock, art. no. 200194.

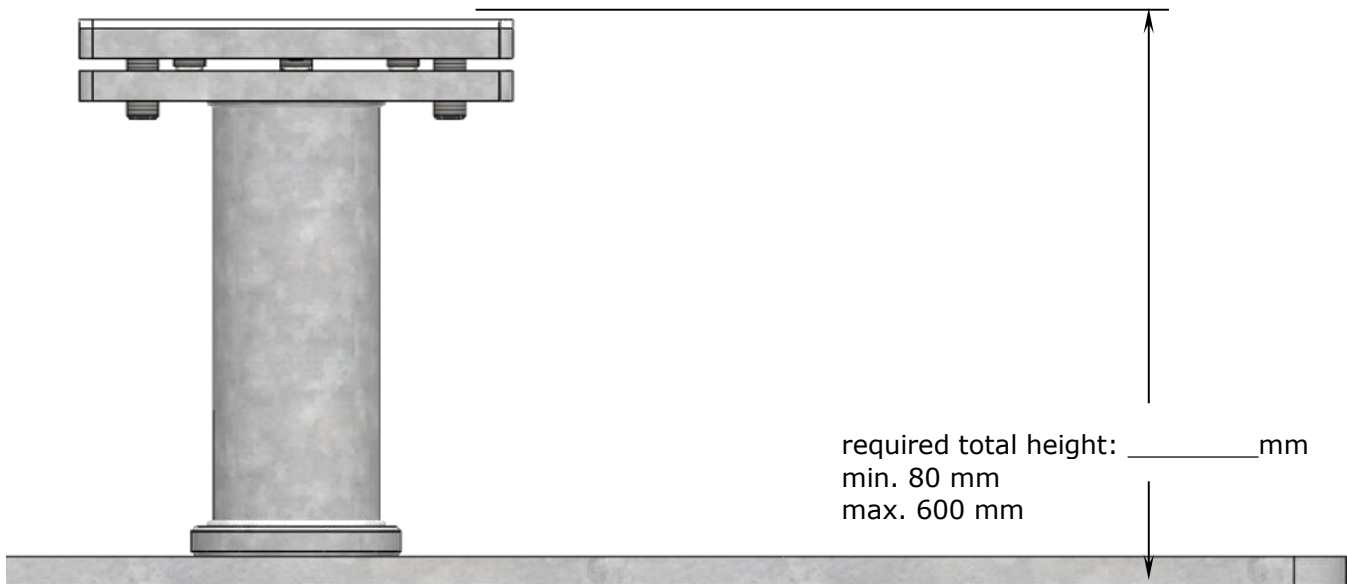


Freestanding base plate 800x800x12mm DMZ139

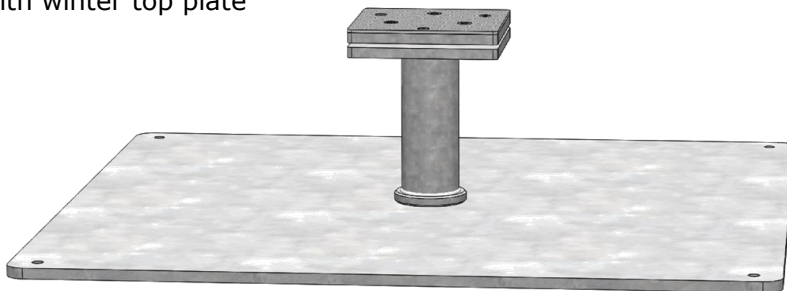


This order sheet must be filled out completely and supplied to the MAY company before production.

All bases are custom-made. When ordering please state the total height required, including winter top plate. (Due to space constraints, the illustration is cut.)



lower part with winter top plate



When ordering, please fill in the fields below:

Quantity: _____ (mandatory)

(Dealer-) Name and address: _____ (optional)

(Dealer-) Commission: _____ (optional)

(Dealer-) Order number: _____ (optional)

(Dealer-) Name of clerk in charge: _____ (optional)

Order placed: _____ (mandatory)

Name

Date

Only for May Gerätebau GmbH:

Order number: _____