

Installation instructions DMZ127 / DMZ027

Customized dowel-anchored plate with placement hinge and upper anchor tube DMZ150 for type FILIUS. This option is not suited for use on sealed rooftops, balconies and terraces. Please opt for installation base DMZ186 for these surfaces.

The following instructions include all information necessary for the installation and operation of this anchor tube. To avoid any misunderstanding we advise you to read these instructions carefully and then keep them for later reference.



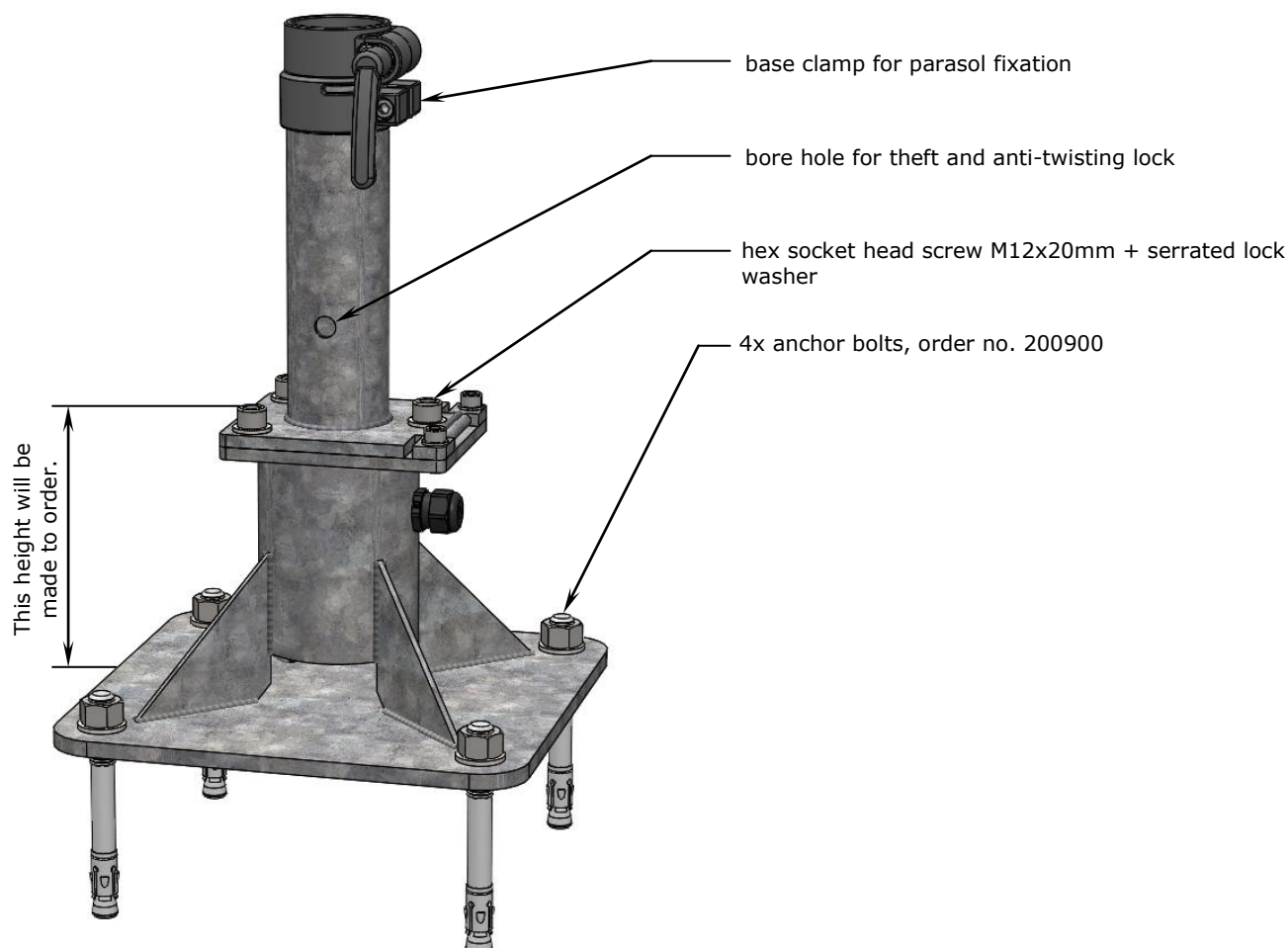
Caution

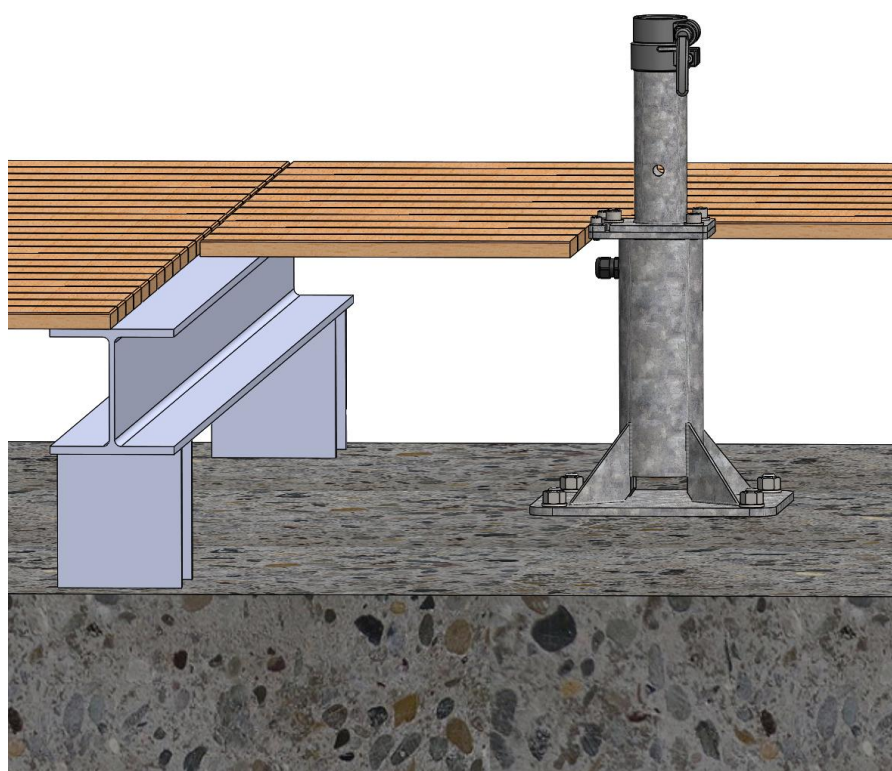
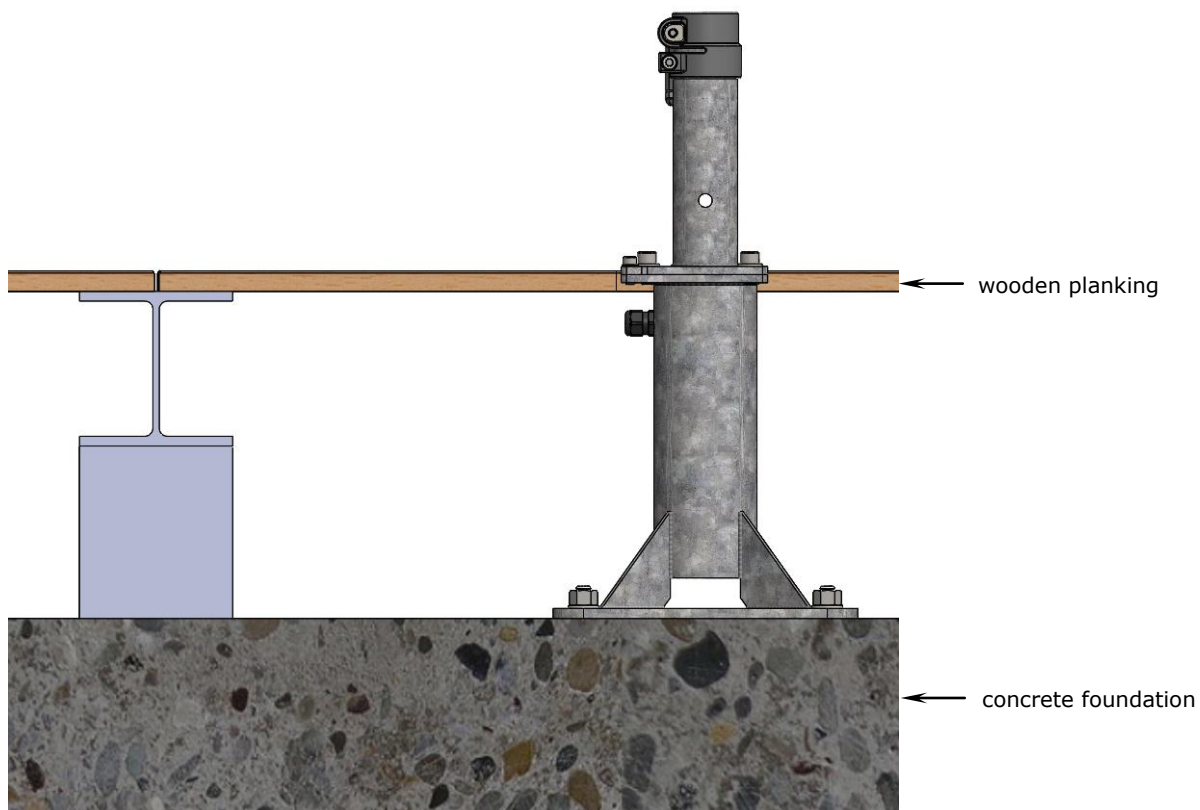
Non- observation of operating instructions can result in personal injuries or damage to property.

Please note that if these instructions are not observed, the manufacturer cannot assume any liability or guarantee.

- Always follow the safety regulations.
- Should you not understand any part of these operating instructions, please contact your MAY dealer.

Diagram showing installation materials





Functioning of the placement hinge

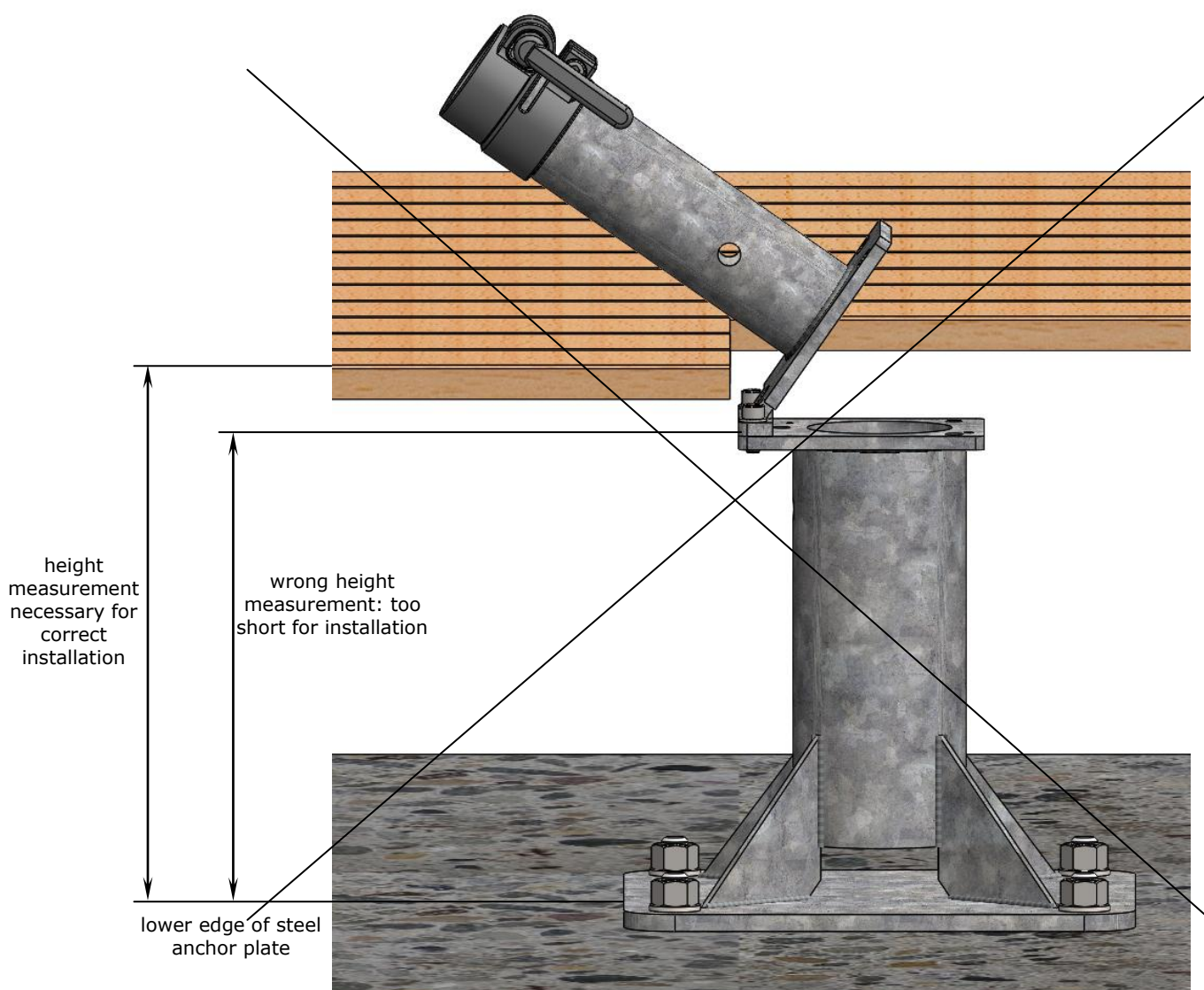


Caution

The placement hinge will not function if the total height is not correctly dimensioned.

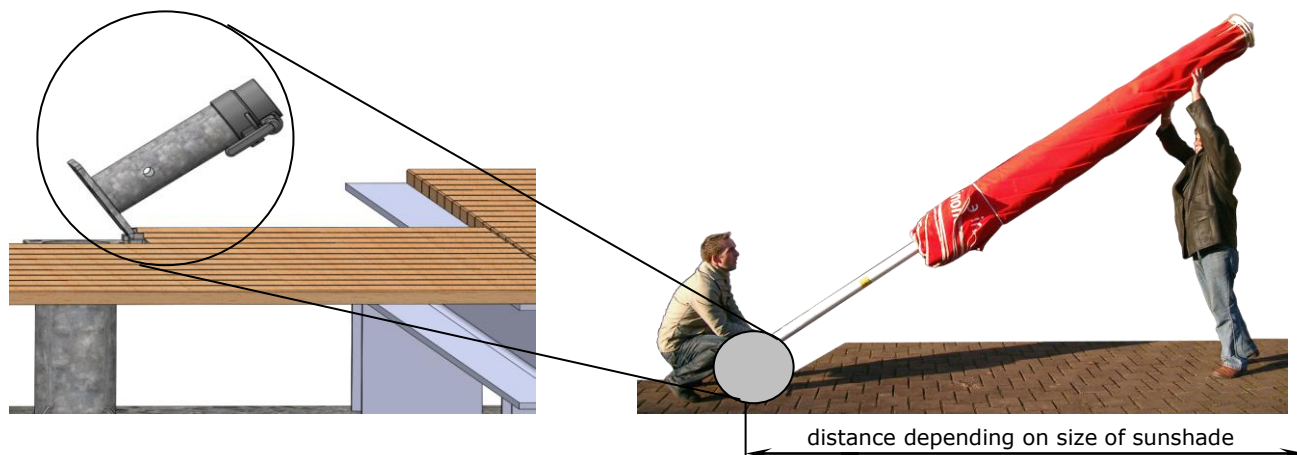
If item DMZ127 / DMZ027 has, by mistake, been ordered and installed with the wrong height measurements, do at least make sure that the bottom component is not set too far down in the ground. If there is a difference of more than 50 mm between the top of the lower anchor tube and the floor surface, the placement hinge cannot be tilted and the sunshade cannot be erected. Moreover, the electrician will not be able to run the power cables.

- Be sure to measure and specify the correct total height for installation.



Determining the position of your DMZ127 / DMZ027

1. Choose the location for your DMZ127 / DMZ027. Put the placement hinge in a position that will allow enough space for the sunshade to be erected and dismantled.



2. Allow sufficient space between sunshades or between the wall of the house and the sunshade.



Caution

Sunshades that are located too close together wear sooner.

Sunshades may sway slightly. If there is not enough space between them, they may touch and abrade or scour the canopy fabric at the spoke ends.

- Make sure that there is a clearance of approx. 20cm between the sunshades (or between sunshade and the wall of the house).

3. Set the DMZ127 / DMZ027 in vertical position.



Caution

Screws that are not tightened correctly will work loose.

If screws are not tightened firmly enough, there will not be sufficient tensile force to trigger self-locking. If the screws are tightened too firmly and over-stressed, the screw connection may slacken.

- Tighten the 3 M12 screws manually using the enclosed hex key and extension. Exert as much force as possible. With the enclosed tools there is virtually no risk of over-stressing.
- The correct torque for a torque wrench is 85 Nm.

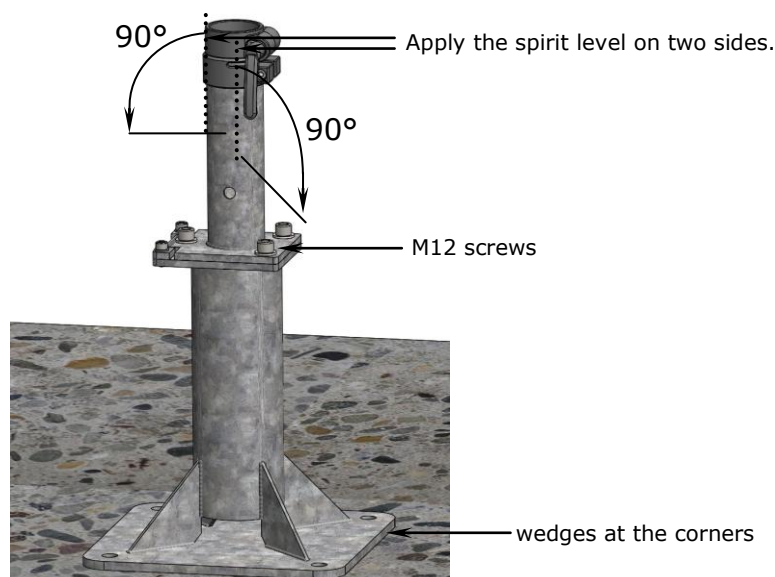


Attention

DMZ127 / DMZ027 must be screwed tight so that the sunshade is in an upright position.

If the upper component of DMZ127 / DMZ027 is not in an absolutely vertical position the sunshade will stand slanted. This would have a negative impact on the overall optical appearance of the sunshades, in particular when several sunshades are in a row and supposed to be aligned.

- Screw the M12 screws tight.
- Use a spirit level to align the DMZ127 / DMZ027. (cf. illustration)
- Use wedges under all four corners. The wedges should be as broad as possible so that the load is well distributed and will not damage the vapour barrier membrane.



4. When setting the DMZ127 / DMZ027, make sure that the ground-level plate of the bottom component is (almost) flush (-3 mm) with the terrace floor surface.

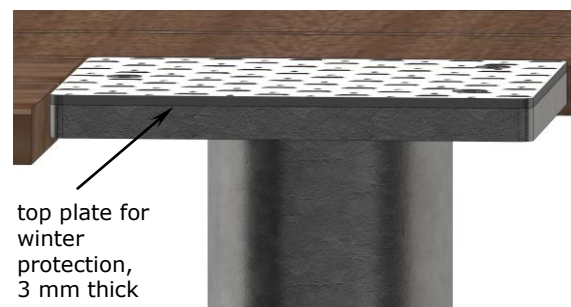


Attention

Avoid tripping hazard.

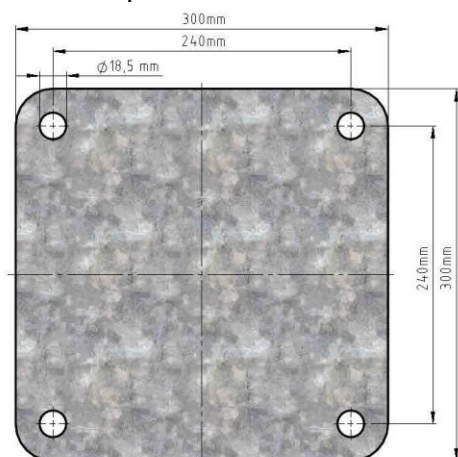
To ensure that the top winter plate (needed as a protective cover in winter when the upper anchor tube has been removed) is flush, the bottom component of DMZ127 / DMZ027 must be set 3 mm below the terrace surface. (cf. illustration) This checker plate for winter protection is 3 mm thick.

- Be sure to order the DMZ127 / DMZ027 bottom component with the correct height measurements so that it will fit properly between the top edge of the concrete foundation and the terrace floor surface. Please use our special MAY order form for custom-made production.
- In case of doubt, state a measurement that is slightly too short. Then this component can be jacked up with wedges. Measurements that are too long can, however, not be adjusted.



Dowelling the anchor plate

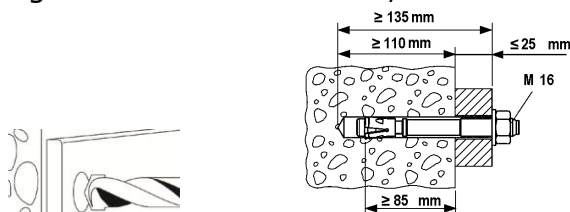
1. Use a hammer drill to drive the 4 bore holes for dowels into the reinforced concrete surface. The drill pattern for the anchor plate is as shown below:



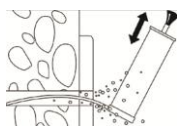
2. Screw the anchor plate onto the foundation. If you use anchor bolts provided by other manufacturers, please observe their instructions. Anchor bolts supplied by MAY should be mounted as follows:

Order No. 200900, threaded bolt with nut, stainless steel A4:

- a. Using a 16 mm hammer drill, drill a min. 110 mm-deep hole into the concrete.



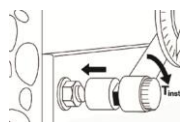
- b. Clean the bore hole with compressed air.



- c. Drive the anchor bolt into the hole. Before doing so, be sure to position the hex nut correctly. (The drive-in pin of the threaded bolt should jut out of the hex nut approx. 2 - 3 mm.)



- d. Use a torque wrench to tighten the nut with 110 Nm.



Danger

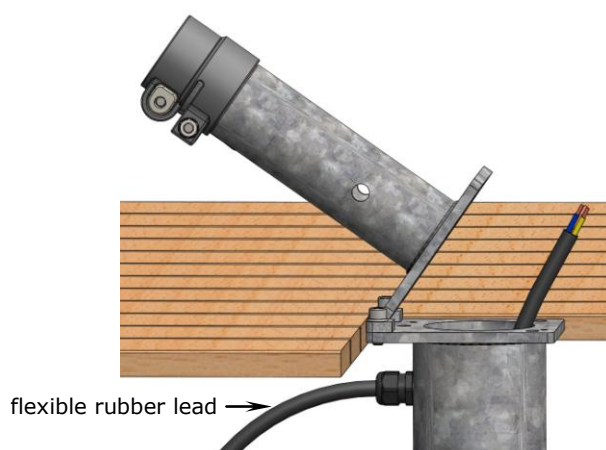
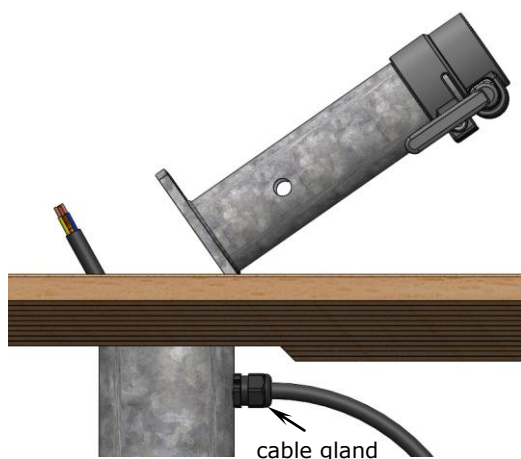
A falling sunshade can cause serious or even fatal injury.

If the dimensions of the anchor bolts do not match the size of the umbrella, the sunshade may fall and cause injuries.

- Always determine the appropriate bolt size with the help of a specialist.
- Anchor bolts of May company are approved for cracked and non-cracked concrete C20/25 to C50/60. Also suitable for concrete C12/15 and natural stone with dense structure.

Power supply (optional)

1. Press the flexible connecting rubber lead (certified approval for outdoor use necessary) through the cable gland and tighten the nut so that the rubber is narrowed and tension relief is provided.



2. The connection of ground cable and power supply for the umbrella must be absolutely waterproof. The ground cable (for heavy current: min. 5-pole, min. 4mm², cable cross section) must be laid to suit the electric load and the length of the lead wire by a qualified electrician.



Danger

Electric installation work should be carried out solely by a certified electrician. Disregarding this warning may result in serious personal injuries.



Danger

To avoid personal injury in case of faults.

Water in the plug connector can lead to a short circuit. Protect the connector against any water.

- Secure umbrella with a 30mA RCBO protective switch.
- According to law, the functioning of protective switches must be checked at least every six months.



Caution

Danger of short circuit.

Water in the plug connector can lead to a short circuit. Protect the connector against any water.

- Make sure that the plug connector remains above the ground when the sunshade is erected, or seal the connector with silicon (or the like) to make it 100% waterproof.



Caution

Fire hazard.

Do not use a dimmer switch. Otherwise the sunshade may catch fire. If the sunshade is equipped with a timer switch or automatic switch off, a dimmer will interfere with the electrical system.

3. Wire colours (Number dependent on consumers installed):

green-yellow	= protection
blue	= neutral
brown	= light (if used)
black, white	= heating (if used)
black	= heating (if used)

Storage/Dismounting

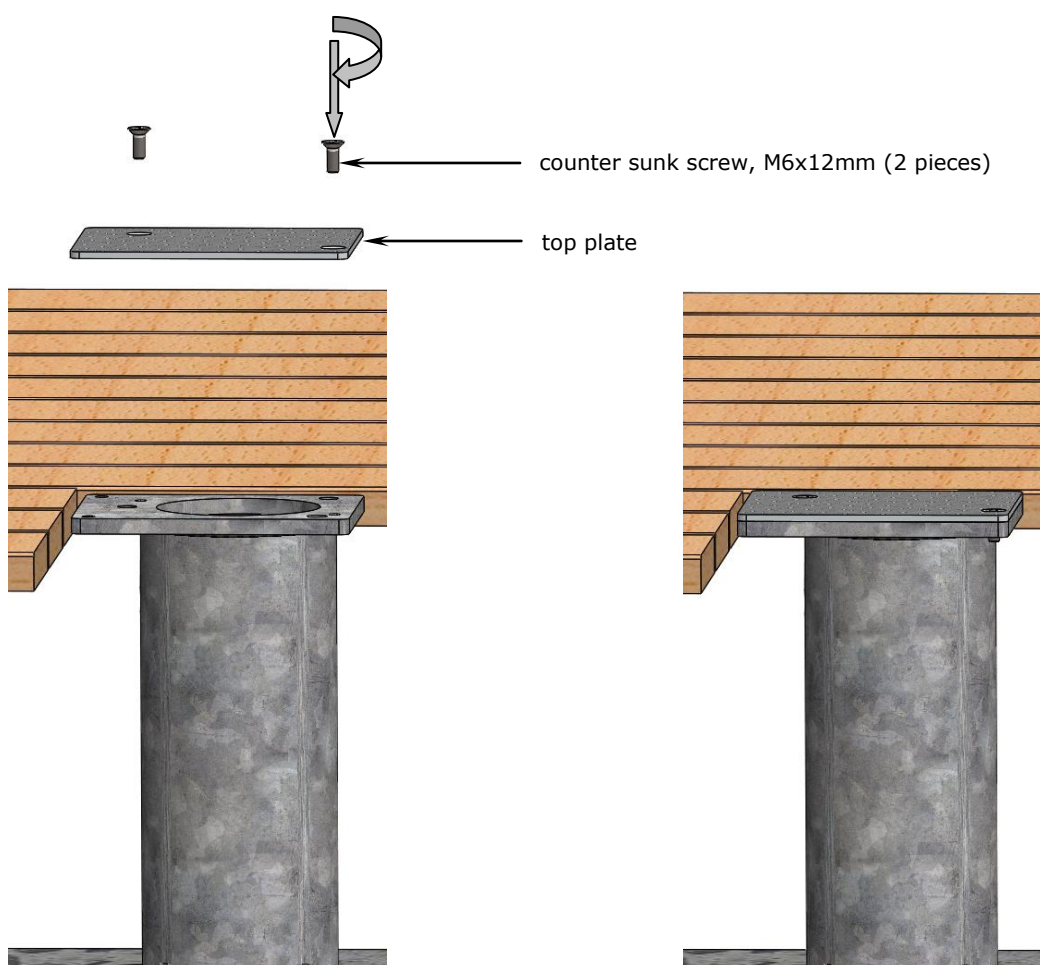
1. Fold down the upper anchor tube. Disconnect the underground cable from the cable in the sunshade pole. Lift the sunshade out of the anchor foot.
2. Remove the upper anchor tube completely by screwing it off.
3. Screw the top plate onto the lower anchor tube. (cf. illus.)



Caution

The thread can get damaged.

When the top plate is not on the lower anchor tube, sand may get washed into the flanks of the thread. As sand is harder than steel, the thread may get damaged when the screw is turned.



4. If you have two or more sunshades, it is advisable to mark them and their accessories (e.g. with metal-stamped numerals or using a waterproof marker) as soon as they have been dismantled (e.g. for winter storage).

Marking saves a lot of time and helps to keep things in order.

Tip

If clearly marked, each sunshade can easily be assigned to its proper location and re-erected parallel to the wall of the house or next to the others.

- For clear and easy later assignment use the same number to mark the centre pole, the upper anchor tube and the lower anchor tube. For example, for sunshade No. 1, all three parts should carry number 1, all three parts of sunshade No. 2 should be marked with a 2, etc.

5. Grease the screws regularly to prevent them from rusting.

Project management

All persons involved should discuss this installation option on site. If these instructions are provided to everyone during the planning period, arguments can be harmonised and therefore unnecessary costs for incorrect planning can be saved. In case this installation option is found not to be suitable, you may select another option from the MAY program. Customized options are available upon request depending on complexity.

Following parties may be involved:

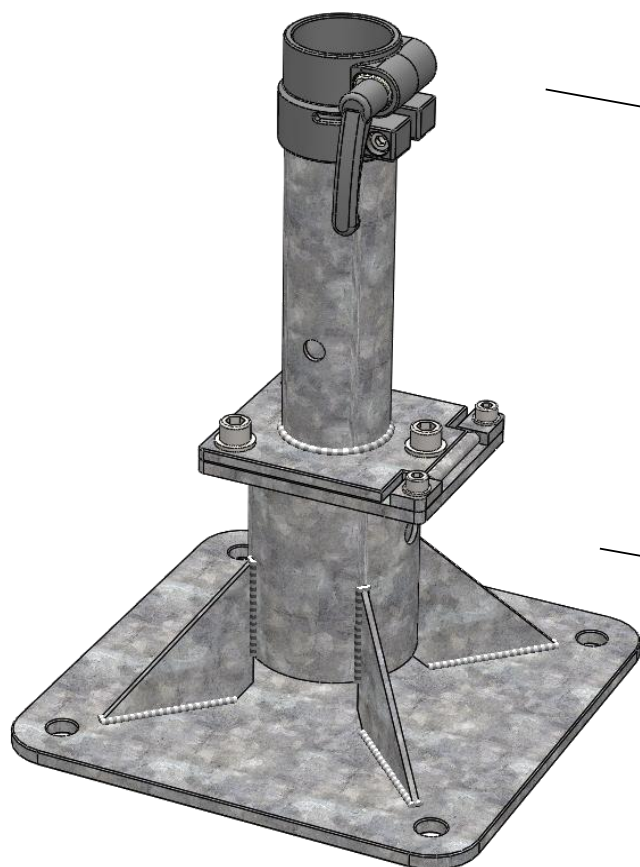
1. House owner: Approval of project, assumption of costs, order placement, etc.
2. Leaseholder / gastronome: Is the positioning of the parasols suitable for the seating, assumption of costs, etc.
3. Architect: General legal planning, positioning, statics of the flat roof (dynamic and static load by weight and wind), control and supervision of the workmen, etc.
4. Workmen: Roofer clarifies and mounts the installation option, pay attention to waterproofing sealing, setting heavy-duty anchor bolts, etc.
5. Electrician: Defines electrical connection, clarifies cable and control, etc.

Dowel-anchored plate with placement hinge DMZ127

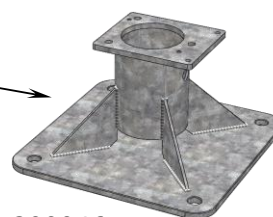


This order sheet must be filled out completely and supplied to the MAY company before production.

Art. no. DMZ127: 2 pieces, screw-off upper part, fits for pole \varnothing 55 mm

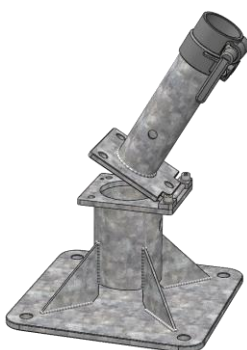
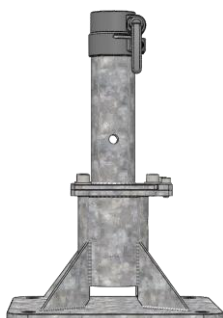


upper part, standard length 25 cm
art. no.: 200041



lower part
art. no.: 200046

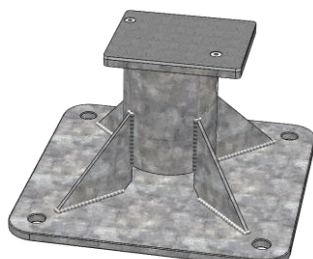
3-D views of DMZ127



Combinable with pin and padlock, art. no. 200194.



3-D view of 200046



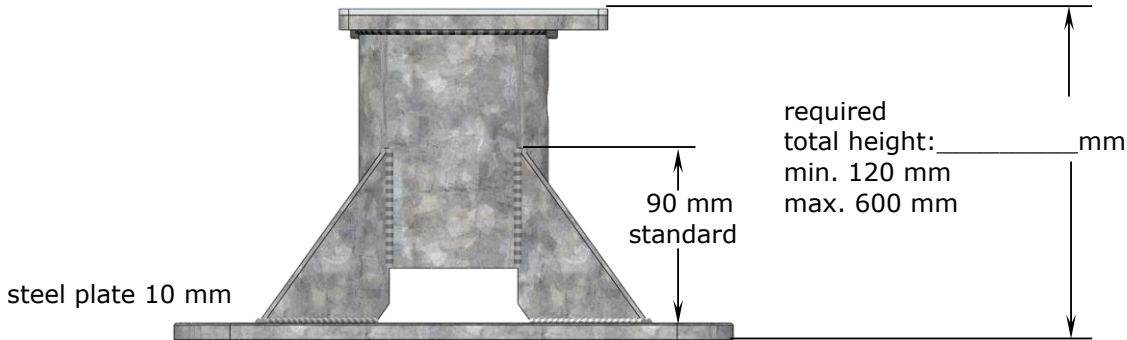
Dowel-anchored plate with placement hinge DMZ127



This order sheet must be filled out completely and supplied to the MAY company before production.

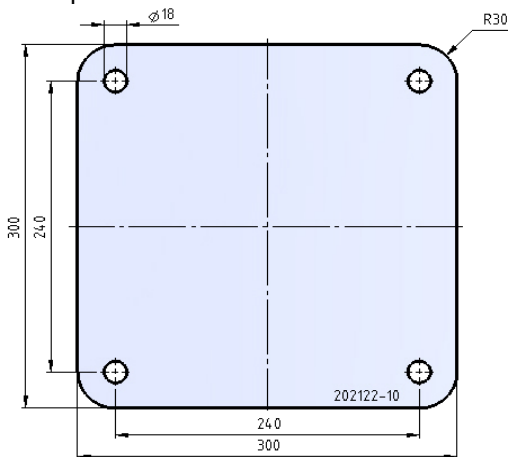
Base of DMZ127 (200046) with top plate for winter protection.

All bases are custom-made. When ordering, please state the total height required, including winter top plate.



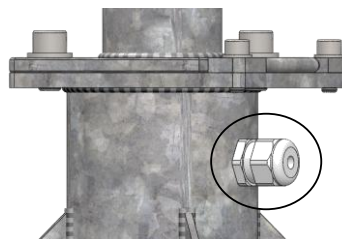
In case the „height of the lower part“ needs to be lower than 120 mm, option DMZ027 must be used.

Grundplatte:



When drilling the heavy-duty anchor bolts into the designated site position, use the anchor plate as a drilling jig. You will need 4 heavy-duty anchor bolts. Available in stainless steel A4, art. no. 200900.

Cable gland for tension relief. Only necessary if power supply is planned.



(mandatory)
required _____
not required _____

When ordering, please fill in the fields below:

Quantity: _____ (mandatory)

(Dealer-) Name and address: _____ (optional)

(Dealer-) Commission: _____ (optional)

(Dealer-) Order number: _____ (optional)

(Dealer-) Name of clerk in charge: _____ (optional)

Order placed: _____ (mandatory)

Name

Date

Only for May Gerätebau GmbH:

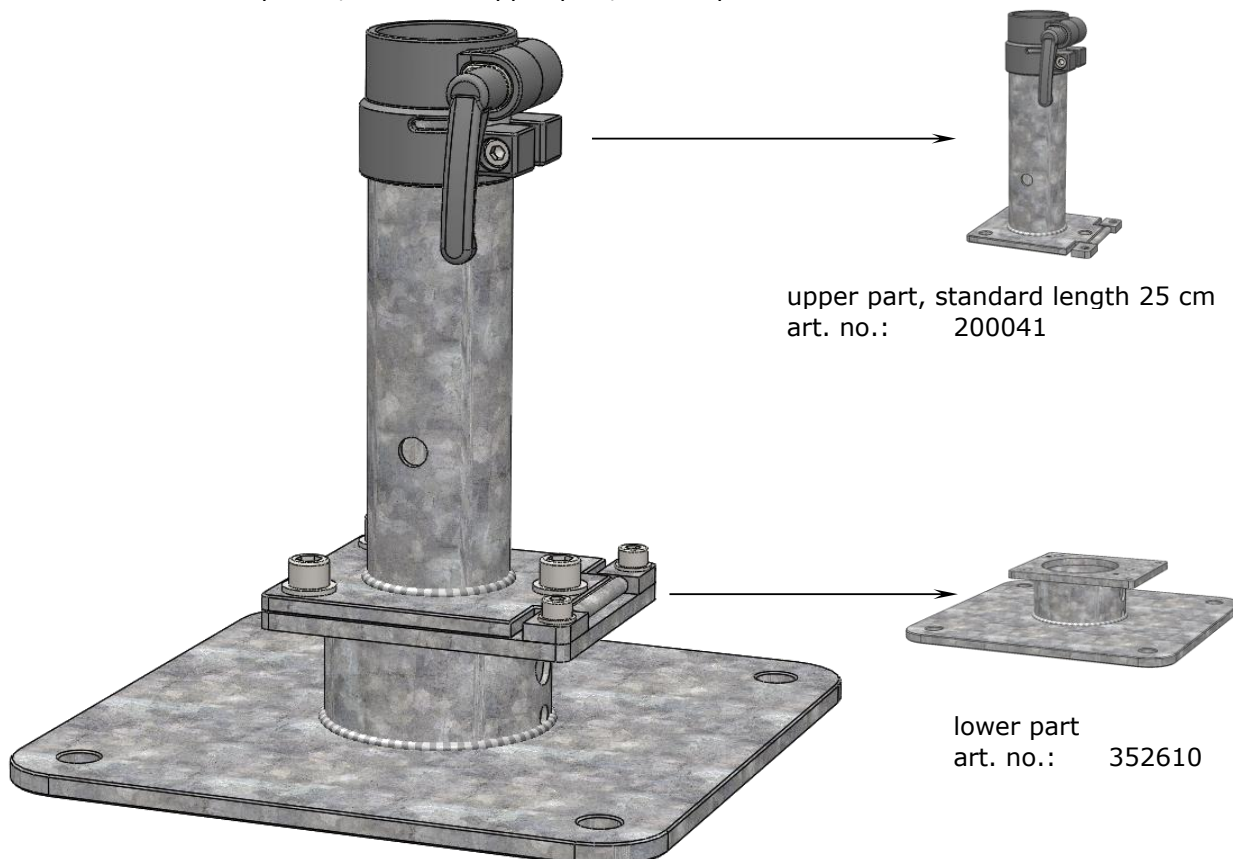
Order number: _____

Dowel-anchored plate with placement hinge DMZ027

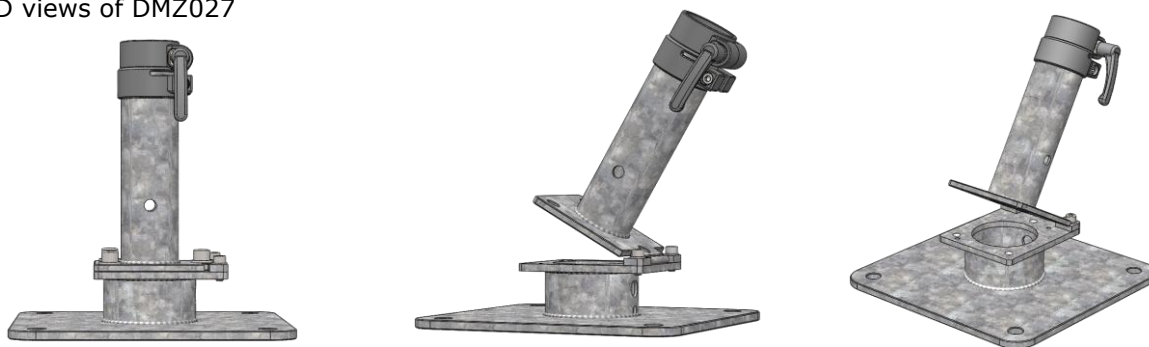


This order sheet must be filled out completely and supplied to the MAY company before production.

Art. no. DMZ027: 2 pieces, screw-off upper part, fits for pole \varnothing 55 mm



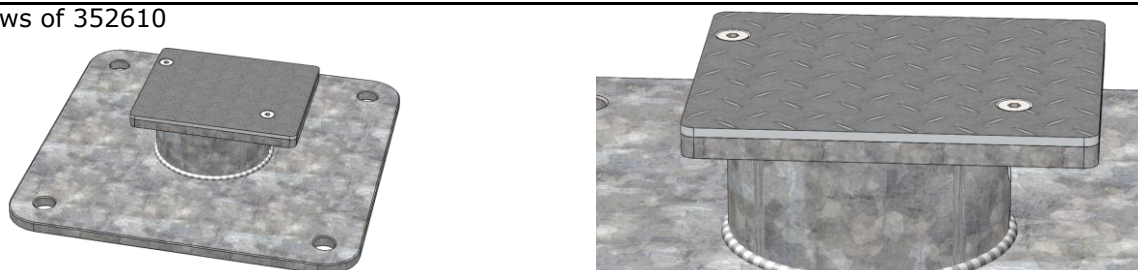
3-D views of DMZ027



Combinable with pin and padlock, art. no. 200194.



3-D views of 352610



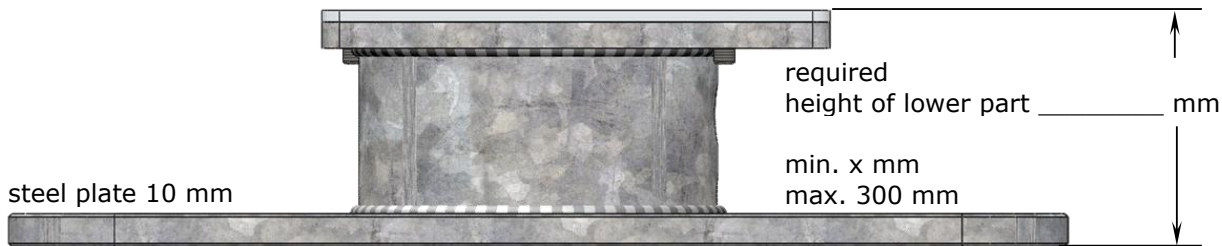
Dowel-anchored plate with placement hinge DMZ027



This order sheet must be filled out completely and supplied to the MAY company before production.

Base of DMZ127 (352610) with top plate for winter protection.

All bases are custom-made. When ordering, please state the total height required, including winter top plate.

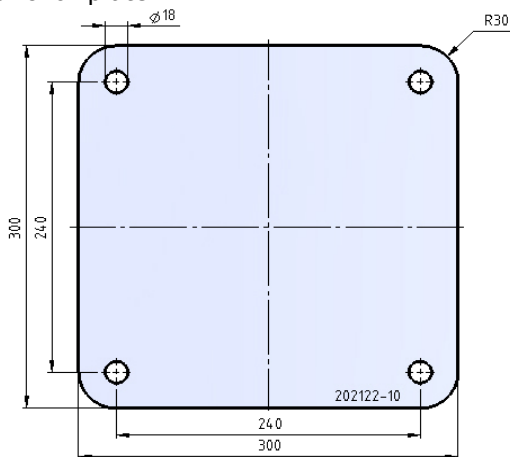


x: Versions without cable gland, 40 mm minimum

x: Versions with cable gland, 70 mm minimum

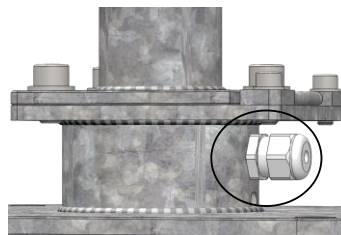
In case the „height of the lower part“ needs to be larger than 120 mm, option DMZ127 must be used.

anchor plate:



When drilling the heavy-duty anchor bolts into the designated site position, use the anchor plate as a drilling jig. You will need 4 heavy-duty anchor bolts. Available in stainless steel A4, art. no. 200900.

Cable gland for tension relief. Only necessary if power supply is planned.



(mandatory)
required _____
not required _____

When ordering, please fill in the fields below:

Quantity: _____ (mandatory)

(Dealer-) Name and address: _____ (optional)

(Dealer-) Commission: _____ (optional)

(Dealer-) Order number: _____ (optional)

(Dealer-) Name of clerk in charge: _____ (optional)

Order placed: _____ (mandatory)

Name

Date

Only for May Gerätebau GmbH:

Order number: _____