

Installation instruction AZ256, AZ257, AZ258 and AZ259

Customized base plate, free-standing, with placement hinge and upper anchor tube AZ120 for ALBATROS Parasols. Please refer to the MAY brochure „commercial parasols“ for the weights required per model. Go to “ALBATROS – Sizes and Technical Data” and look up the “Minimum-ballast”. In case of non-compliance, the MAY company cannot assume any liability.

The following instructions include all information necessary for the assembly of this base pedestal. To avoid any misunderstanding, we advise you to read these instructions carefully and then keep them for later reference.



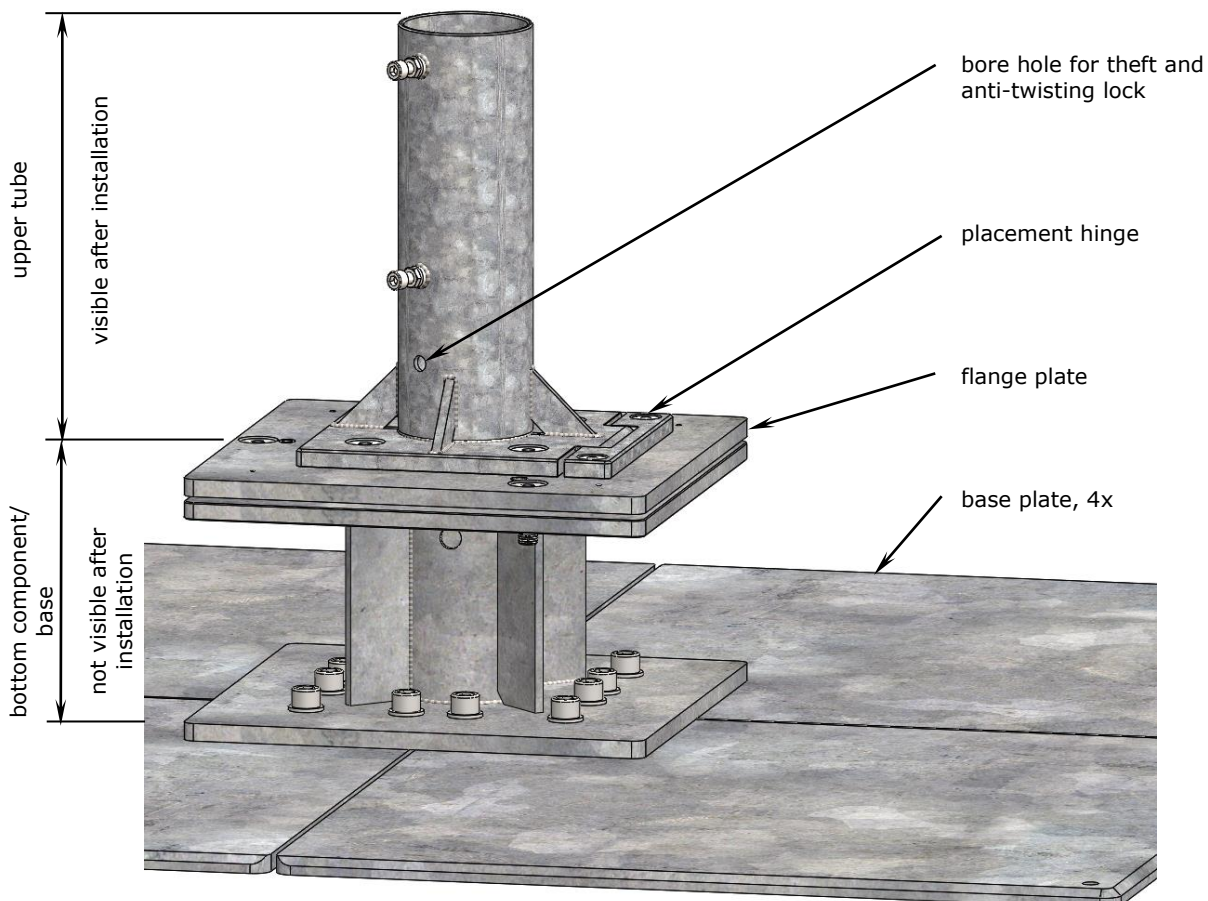
Caution

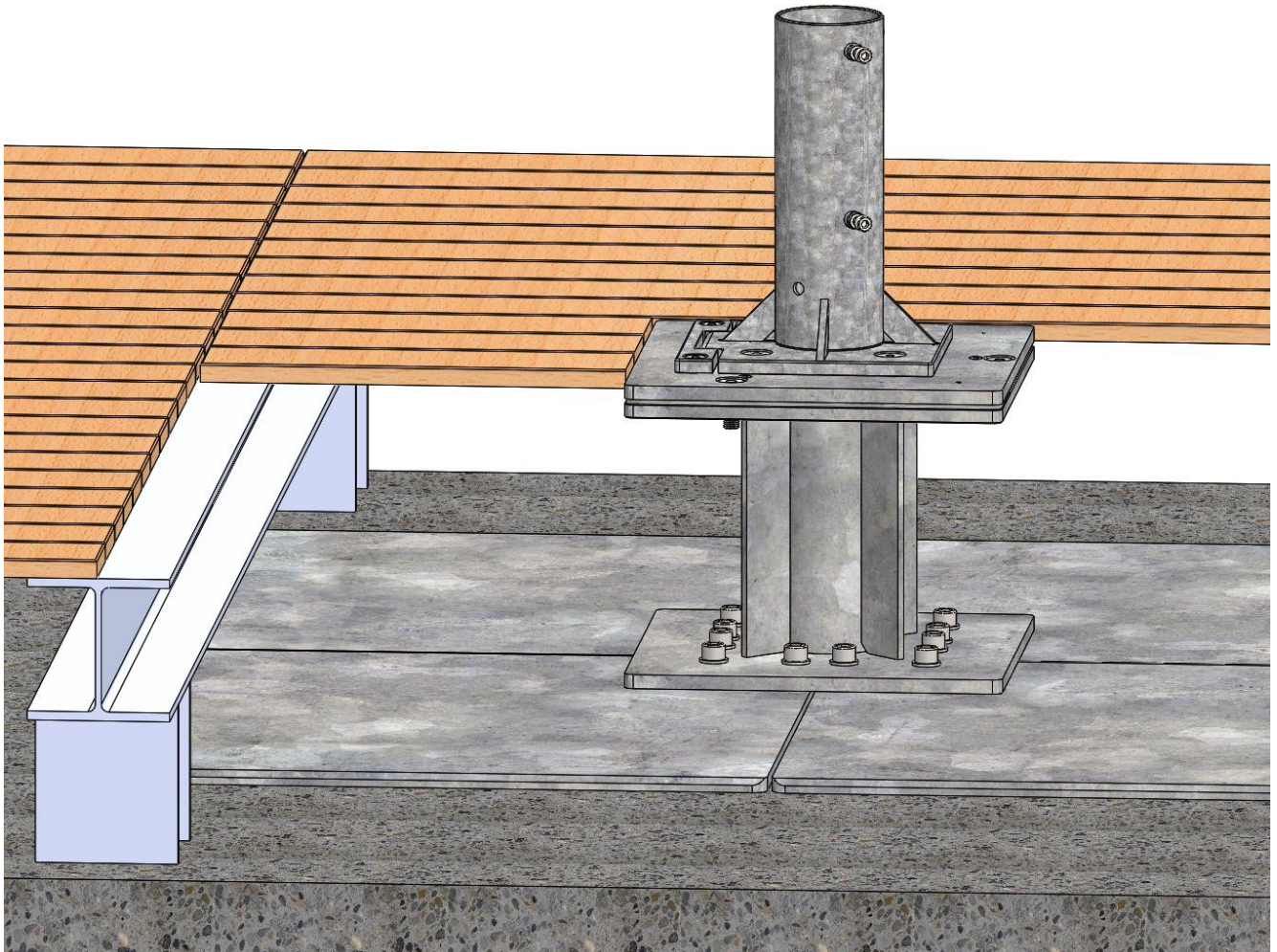
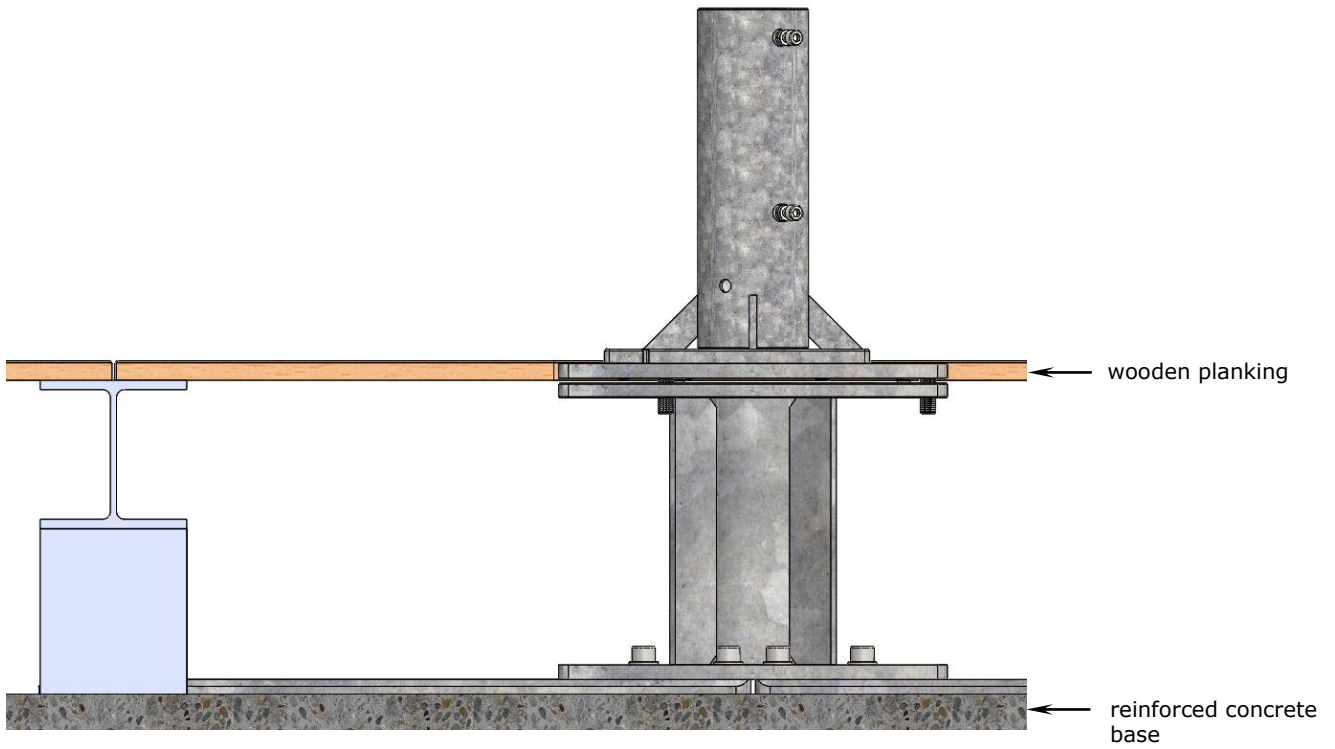
Non- observation of mounting instructions can result in personal injuries or damage to property.

Please note that if these instructions are not observed, the manufacturer cannot assume any liability or guarantee.

- Always follow the safety regulations.
- Should you not understand any part of these mounting instructions, please contact your MAY dealer.

Diagram showing mounting procedure





Functioning of the placement hinge

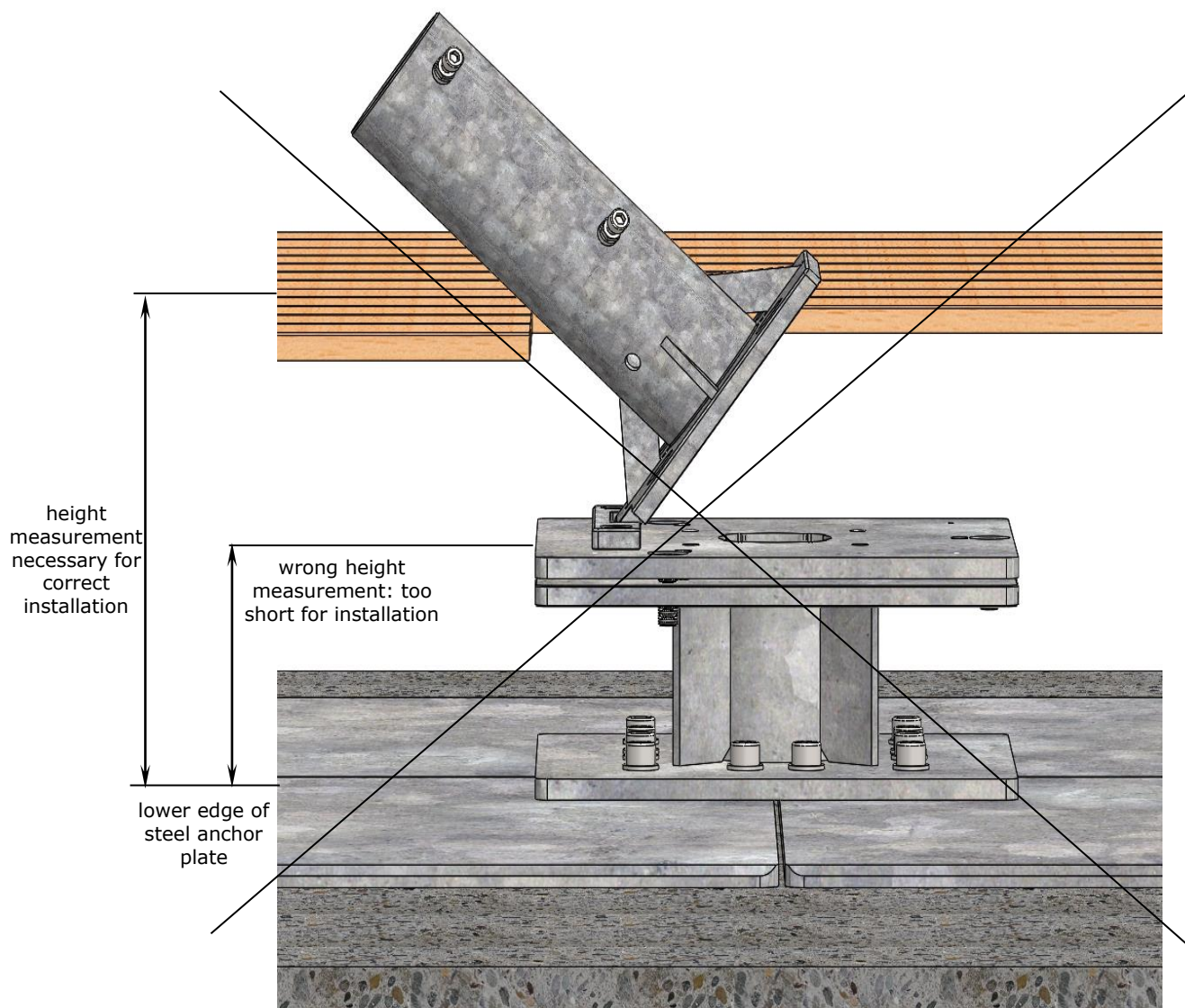


Caution

The placement hinge will not function if the total height is not correctly dimensioned.

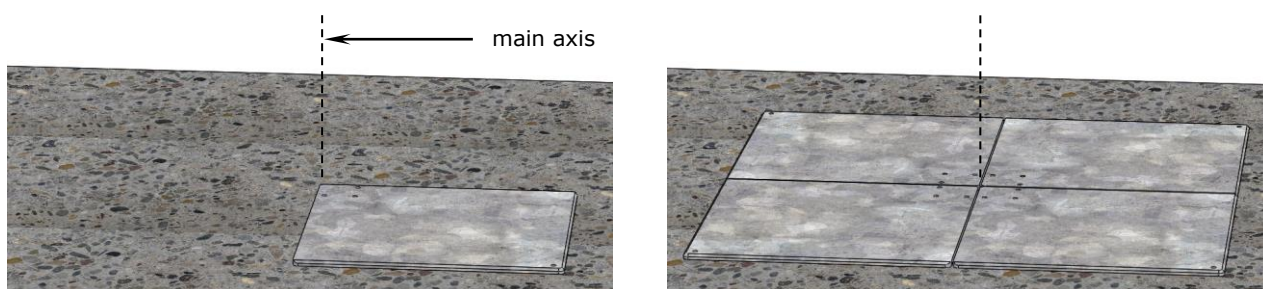
If item AZ256 / AZ257 / AZ258 / AZ259 has, by mistake, been ordered and installed with the wrong height measurements, do at least make sure that the bottom component is not set too far down in the ground. If there is a difference of more than 50 mm between the top of the lower anchor tube and the floor surface, the placement hinge cannot be tilted and the parasol cannot be erected. Moreover, the electrician will not be able to run the power cables.

- Be sure to measure and specify the correct total height for installation.



Screwing the base pedestal together

1. Centre the 4 base plates around the spot determined for the main axis of your ALBATROS giant parasol. Each of the corners with three threads must point to the main axis. The bottom layer of the steel plates must have 3 threads.



2. Determine the correct position of AZ256 / AZ257 / AZ258 / AZ259 after careful calculation of the main axis of the parasol. Allow enough clearance between parasols or from walls.



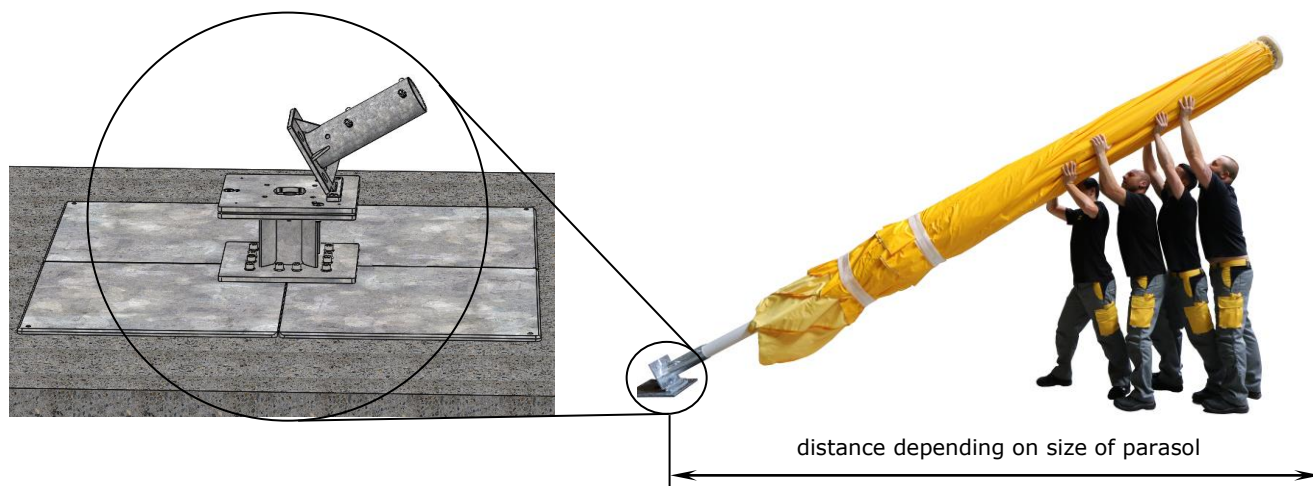
Caution

Parasols that are located too close together wear sooner.

Parasols may sway slightly. If there is not enough space between them, they may touch and abrade or scour the canopy fabric at the spoke ends.

- Make sure that there is a safety clearance of approx. 25-30 cm between the parasols (or between parasol and the wall of the house).

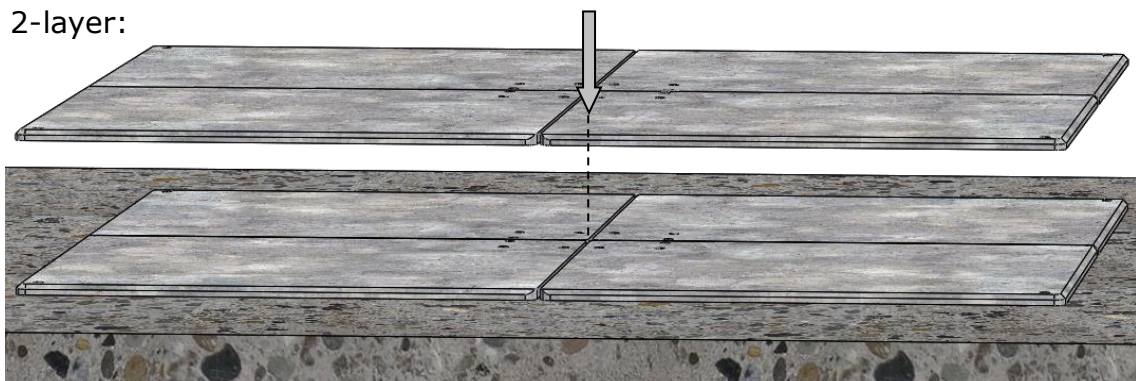
3. Put the placement hinge in a position that will allow enough space for the parasol to be erected and dismantled.



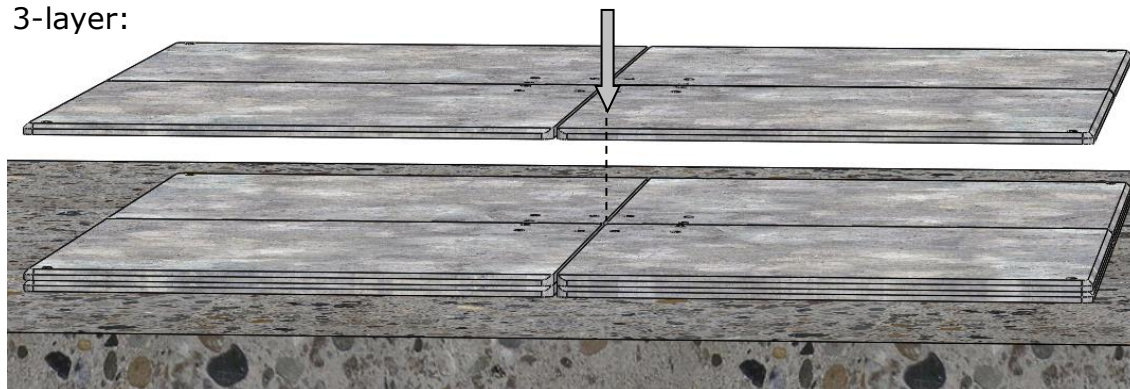
4. For AZ257, AZ258 and AZ259, now add the additional steel plates. Use the enclosed hexagonal screws M5 x 60 mm as spacers (and for assembly) between the individual steel plates to ensure precise positioning.



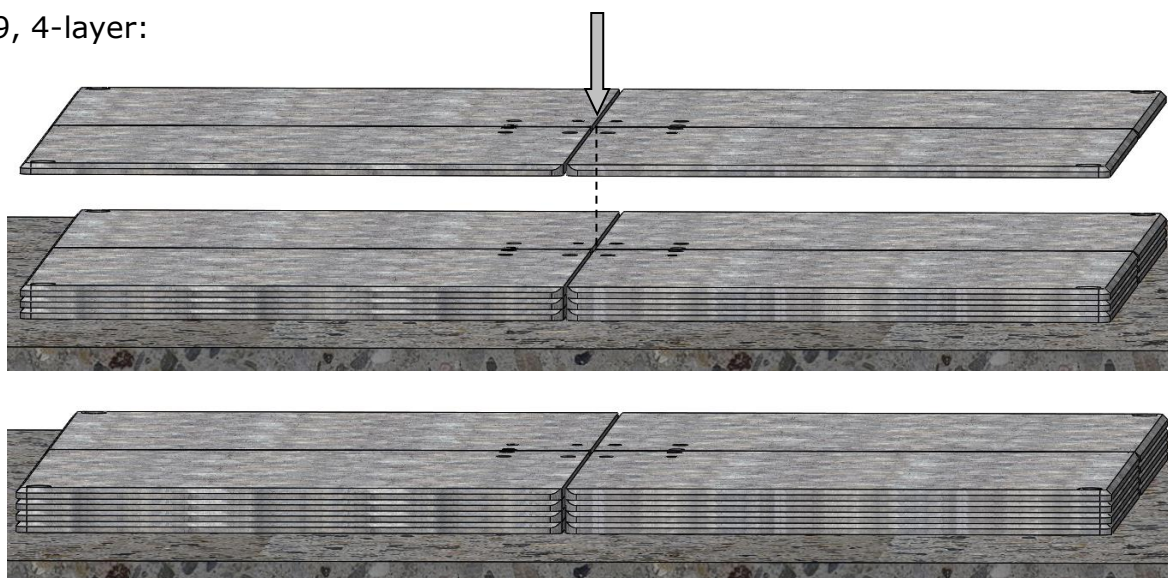
AZ257, 2-layer:



AZ258, 3-layer:

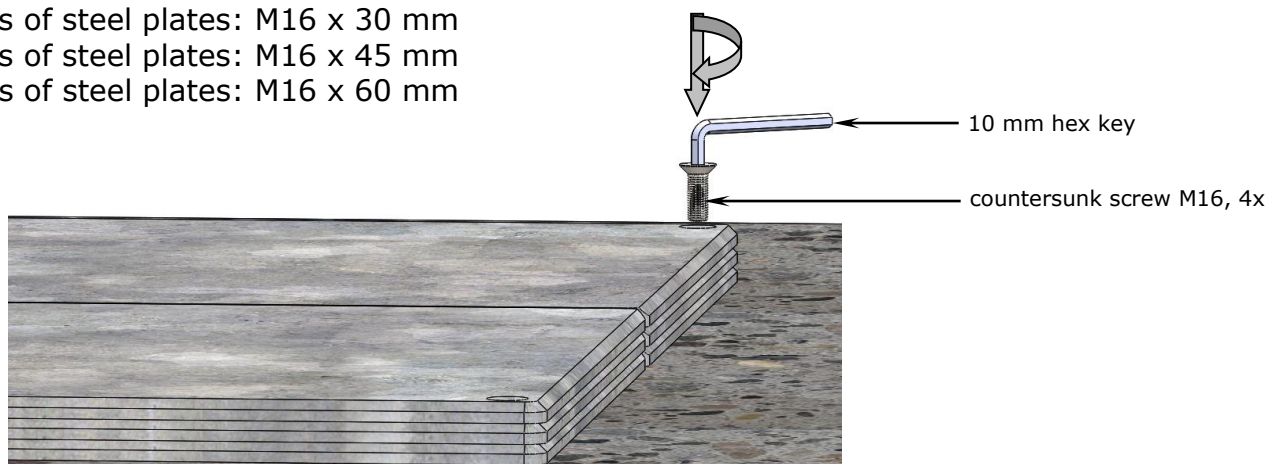


AZ259, 4-layer:



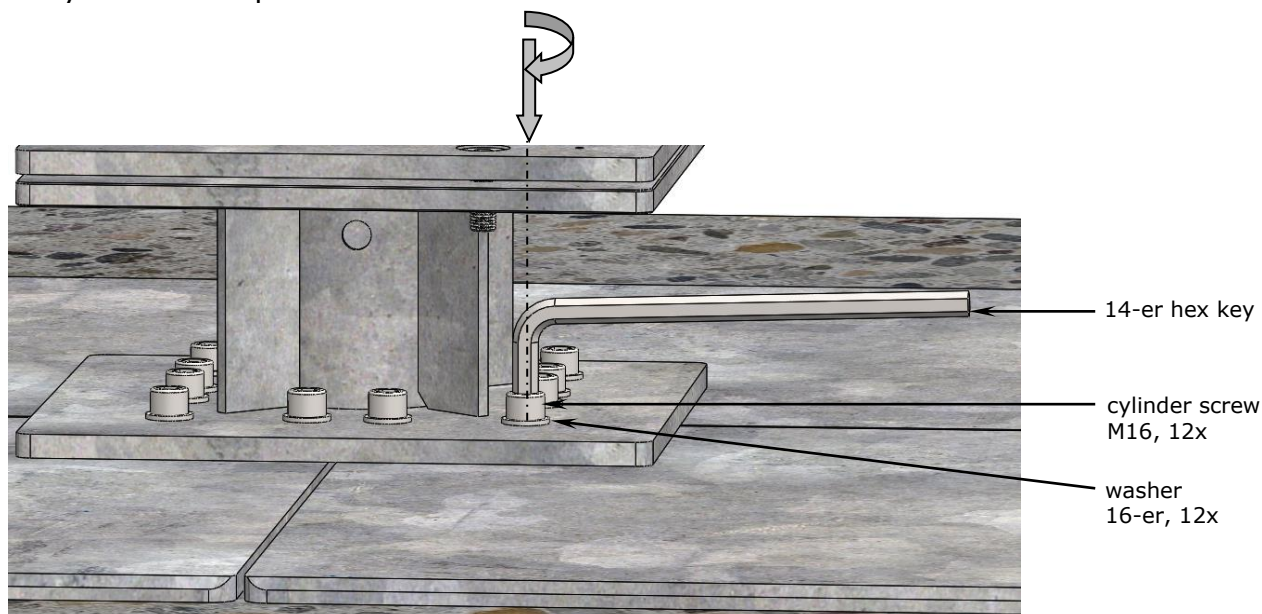
5. For AZ257, AZ258 and AZ259, now use the 4 hex socket head screws to connect the additional layers of steel plates with each other, one at each corner.

2 layers of steel plates: M16 x 30 mm
 3 layers of steel plates: M16 x 45 mm
 4 layers of steel plates: M16 x 60 mm



6. Screw the bottom part onto the base plate. Put the 16 mm washer onto the M16mm cylinder screw and use the 14 mm hex key to tighten them. Follow this procedure for all 12 cylinder screws.

- 1 layer of steel plates: M16 x 30 mm
- 2 layers of steel plates: M16 x 45 mm
- 3 layers of steel plates: M16 x 60 mm
- 4 layers of steel plates: M16 x 80 mm



Caution

Screws that are not tightened correctly will work loose.

If screws are not tightened firmly enough, there will not be sufficient tensile force to trigger self-locking. If the screws are tightened too firmly and over-stressed, the screw connection may slacken.

- Tighten the M16 cylinder screw manually using the enclosed hex key and extension. Exert as much force as possible. With the enclosed tools there is virtually no risk of over-stressing.
 - The correct torque for a torque wrench is 210 Nm.
-



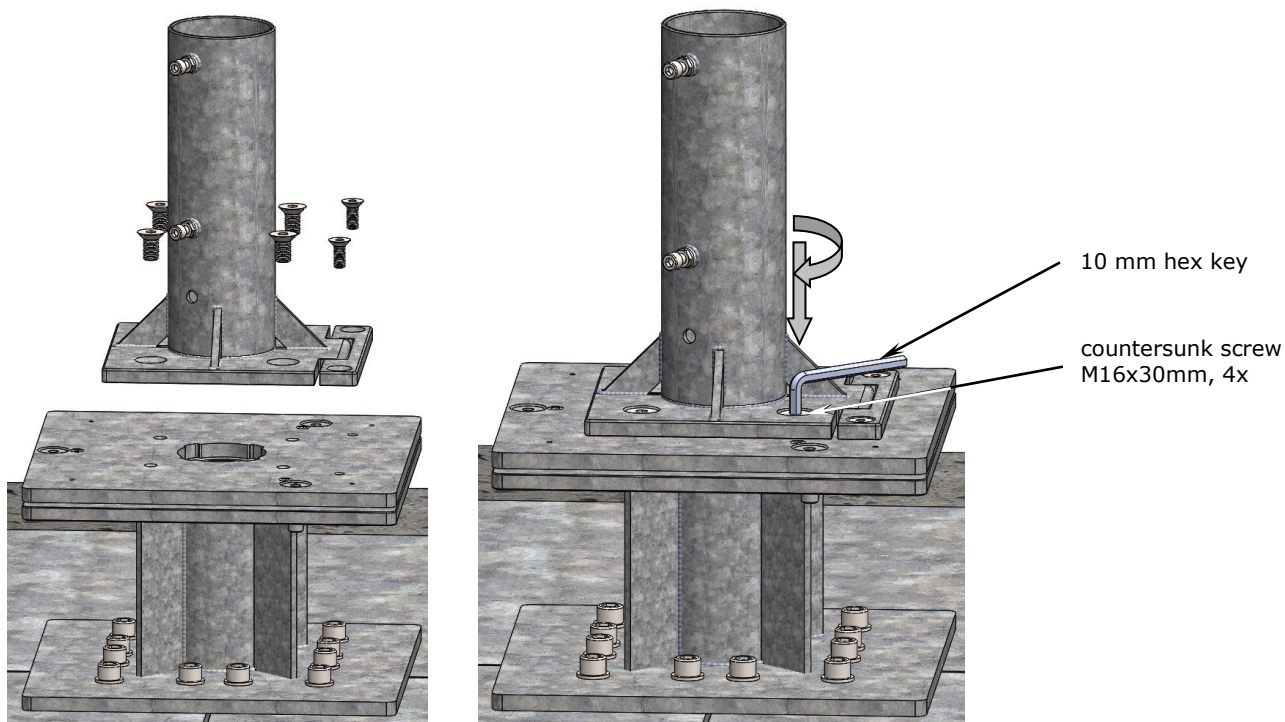
Caution

Risk of damaging threads.

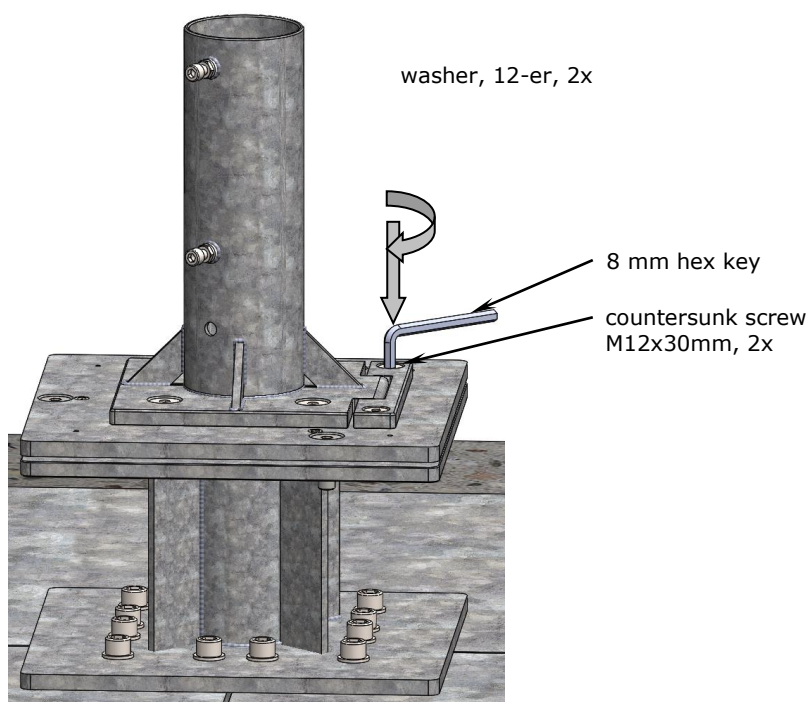
Sand is harder than steel. Driving sand-covered screws may damage the threads.

- It is advisable to clean and grease screws and thread holes.
-

7. Screw the upper anchor tube onto the flange plate (cf. illustration). To do so, put the M16x30mm countersunk screw and tighten it, using the 10 mm hex key and extension provided.



8. Slip the 12 mm washer on the M12x30mm countersunk screw and tighten it, using the 8 mm hex key provided.





Caution

Screws that are not tightened correctly will work loose.

If screws are not tightened firmly enough, there will not be sufficient tensile force to trigger self-locking. If the screws are tightened too firmly and over-stressed, the screw connection may slacken.

- Tighten the M12 screw manually using the enclosed hex key and extension.
 - The correct torque for a torque wrench is 86 Nm.
-



Caution

Risk of damaging threads.

Sand is harder than steel. Driving sand-covered screws may damage the threads.

- It is advisable to clean and grease screws and thread holes.
-

9. Bring the bottom part to the suitable height.

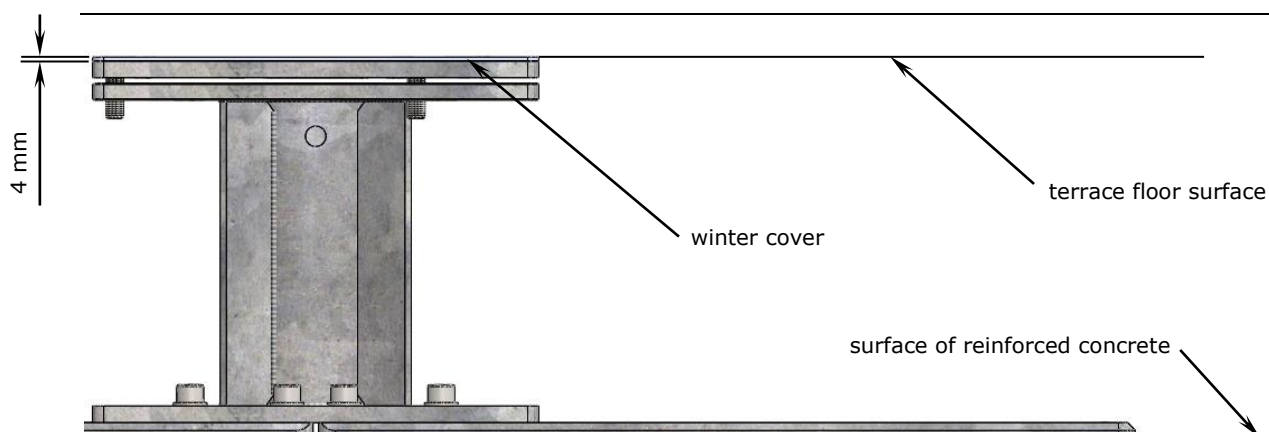


Attention

Avoid tripping hazard.

To ensure that the top winter plate (in winter when the upper anchor tube has been removed) is flush, the bottom component must be set 4 mm below the terrace surface (cf. illustration). The difference of 4 mm corresponds to the thickness of the checker plate.

- Be sure to order bottom component with the correct height measurements so that it will fit properly between the top edge of the concrete foundation and the terrace floor surface. Please use our special MAY order form for custom-made production.
 - In case of doubt, state a measurement that is slightly too short. Then this component can be jacked up with wedges. Measurements that are too long can, however, not be adjusted.
 - The base plate must be sufficiently underpinned until it lies absolutely flat and cannot sway in windy conditions.
 - When underpinning the base plate, make sure that there is no surface pressure that may damage the separation layer (e.g. bitumen layer) under the plate.
 - For height measurements take into consideration that the winter top plate is 4 mm thick.
-



10. As a rule, the reinforced concrete foundation is not completely even, meaning that the parasol will not necessarily stand perfectly upright. In this case, the upper anchor tube must be straightened with the help of the setscrews.

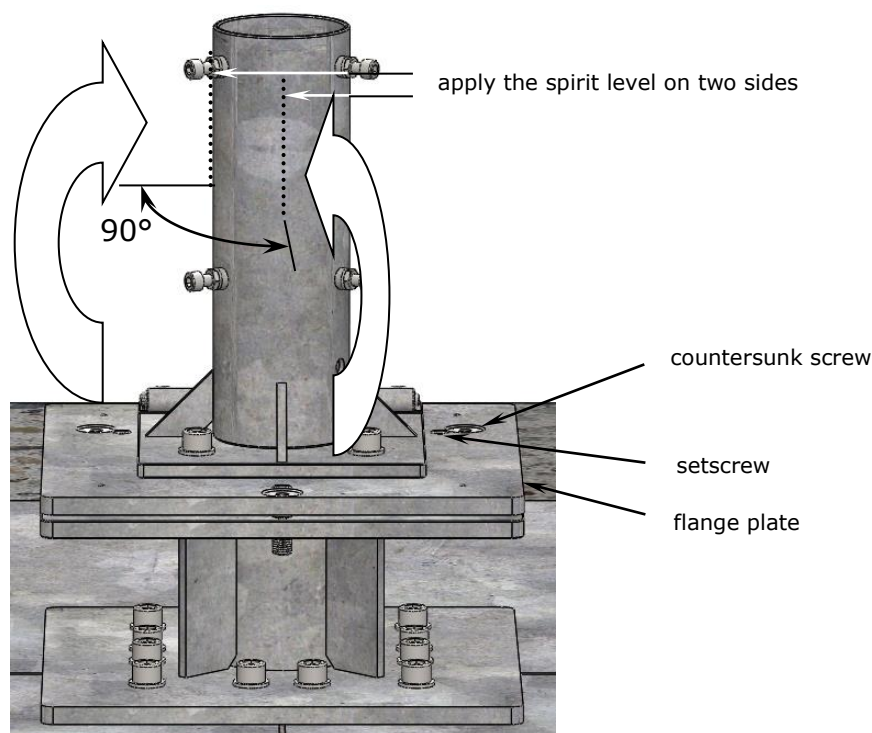


Attention

In order to ensure that the upper tube and the parasol are in a vertical position, the flange plate must be levelled.

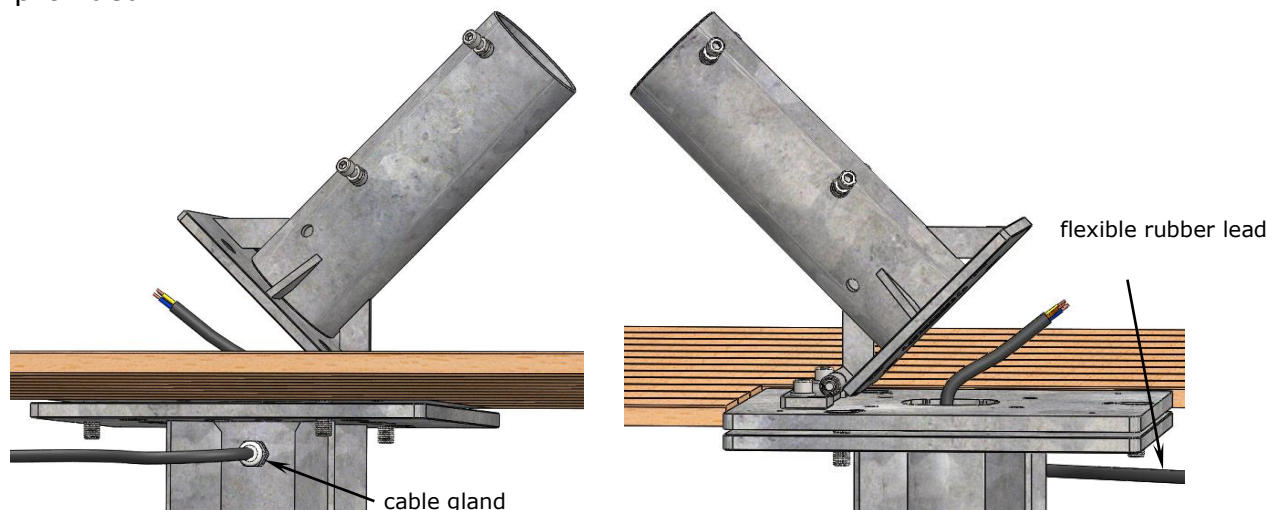
If the upper anchor tube of AZ256 / AZ257 / AZ258 / AZ259 is not in an absolutely vertical position, the parasol will stand slanted. This would have a negative impact on the overall optical appearance, in particular when several parasols are in a row but not straight.

- Loosen the countersunk screws.
- Alternately apply a spirit level on two sides and adjust the position of the parasol with the setscrews.
- When you are sure that the upper anchor tube is in vertical position, tighten the countersunk screws.



Power supply (optional)

1. Press the flexible connecting rubber lead (certified approval for outdoor use necessary) through the cable gland and tighten the nut so that the rubber is narrowed and tension relief is provided.



2. The connection of ground cable and power supply for the parasol must be absolutely waterproof. The ground cable (for heavy current: min. 5-pole, min. 4mm², cable cross section) must be laid to suit the electric load and the length of the lead wire by a qualified electrician.



Danger

Electric installation work should be carried out solely by a certified electrician. Disregarding this warning may result in serious personal injuries.



Danger

Personal injury in case of faults.

- Secure the parasol with an FI fuse or a 30mA RCBO protective switch, respectively.
- According to law, the functioning of protective switches must be checked at least every six months.



Caution

Danger of short circuit.

Water in the plug connector can lead to a short circuit. Protect the connector against any water.

- Make sure that the plug connector remains above the ground when the parasol is erected
- Seal the connector with silicon.

3. Wire colours (Number dependent on consumers installed):
- | | |
|--------------|---------------------|
| green-yellow | = protection |
| blue | = neutral |
| brown | = light (if used) |
| black, white | = heating (if used) |
| black | = heating (if used) |

Storage/Dismounting

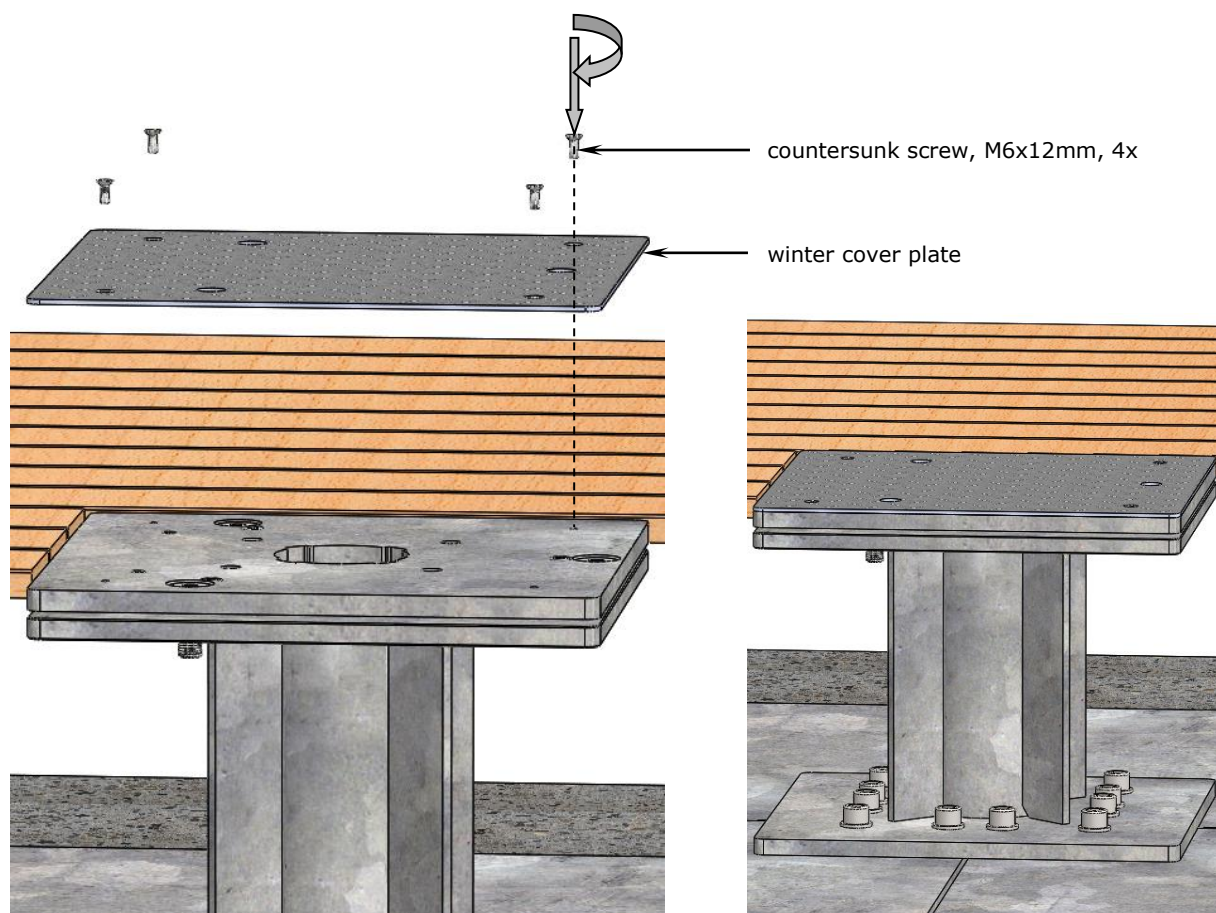
1. Fold down the upper anchor tube. Disconnect the underground cable from the cable in the parasol pole. Lift the parasol out of the anchor foot.
2. Remove the upper anchor tube completely by screwing it off.
3. Screw the top plate onto the lower anchor tube. (cf. illus.)



Caution

The thread can get damaged.

When the top plate is not on the lower anchor tube, sand may get washed into the flanks of the thread. As sand is harder than steel, the thread may get damaged when the screw is turned.



4. If you have two or more parasols, it is advisable to mark them and their accessories (e.g. with metal-stamped numerals or using a waterproof marker) as soon as they have been dismantled (e.g. for winter storage).



Hint

Marking saves a lot of time and helps to keep things in order.

If clearly marked, each parasol can easily be assigned to its proper location and re-erected parallel to the wall of the house or next to the others.

- For clear and easy later assignment use the same number to mark the centre pole, the upper anchor tube and the lower anchor tube. For example, for parasol No. 1, all three parts should carry number 1, all three parts of parasol No. 2 should be marked with a 2, etc.
-

5. Grease the screws regularly to prevent them from rusting.

Project management

All persons involved should discuss this installation option on site. If these instructions are provided to everyone during the planning period, arguments can be harmonised and therefore unnecessary costs for incorrect planning can be saved. In case this installation option is found not to be suitable, you may select another option from the MAY program. Customized options are available upon request depending on complexity.

Following parties may be involved:

1. House owner: Approval of project, assumption of costs, order placement, etc.
2. Leaseholder / gastronome: Is the positioning of the parasols suitable for the seating, assumption of costs, etc.
3. Architect: General legal planning, positioning, statics of the flat roof (dynamic and static load by weight and wind), control and supervision of the workmen, etc.
4. Workmen: Roofer clarifies and mounts the installation option, pay attention to waterproofing sealing, setting heavy-duty anchor bolts, etc.
5. Electrician: Defines electrical connection, clarifies cable and control, etc.

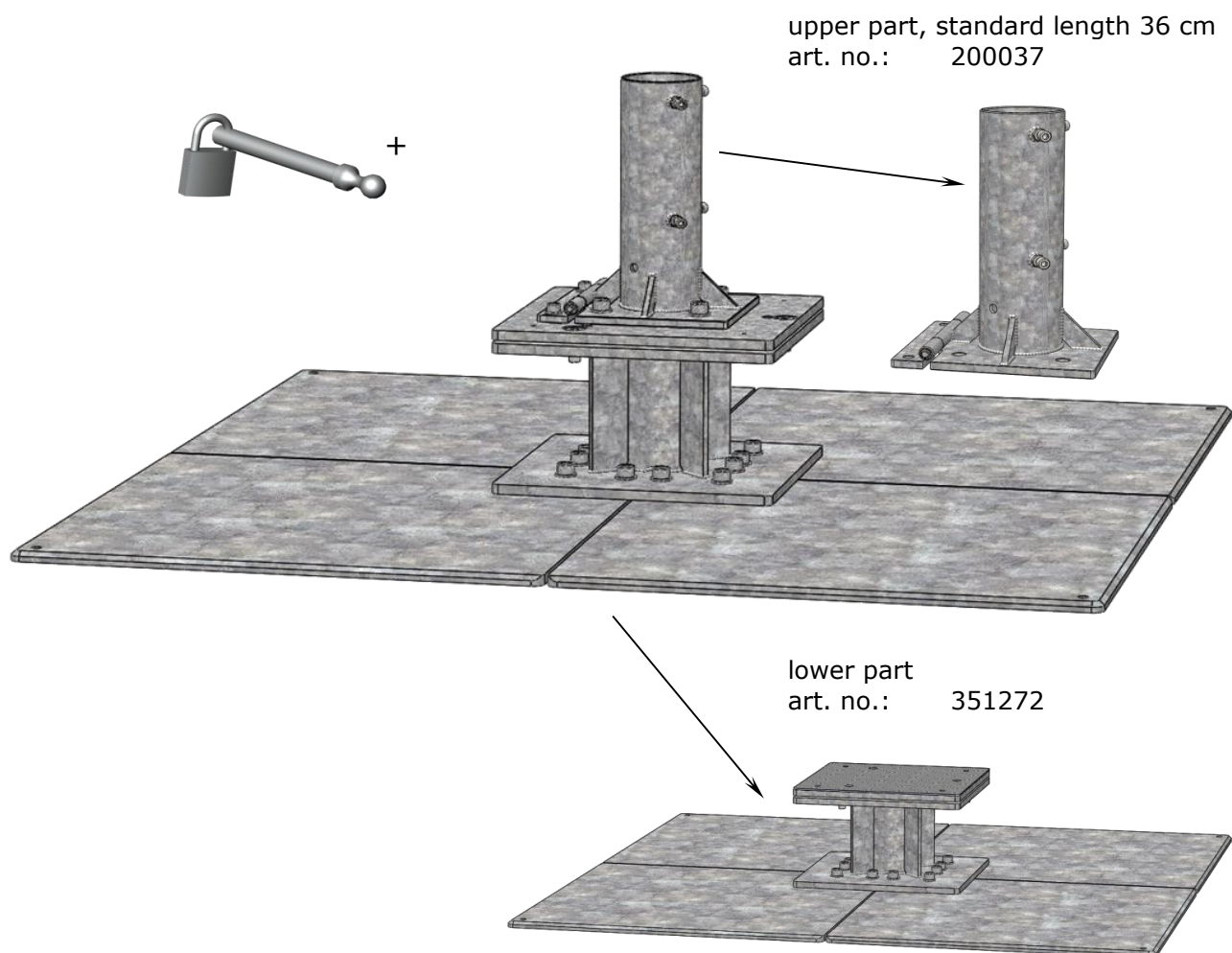
Freestanding base plate, 1470x1470x15mm,
1 layer, approx. 322 kg, with placement hinge,
AZ256



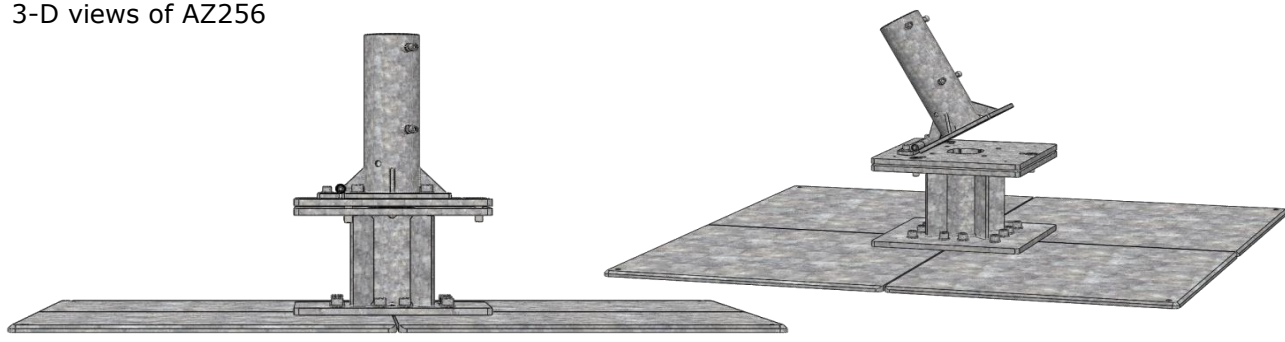
This order sheet must be filled out completely and supplied to the MAY company before production.

Art. no. AZ256: Multi-piece, screw-off upper part and base spacer, for centre pole- \varnothing 100 mm, mounted on site, heaviest part approx. 63 kg, base plate size: 147x147 cm, steel plate thickness $x = 15$ mm, hot-dip galvanised.

delivery content: inclusive pin and padlock, art. no. 200826



3-D views of AZ256



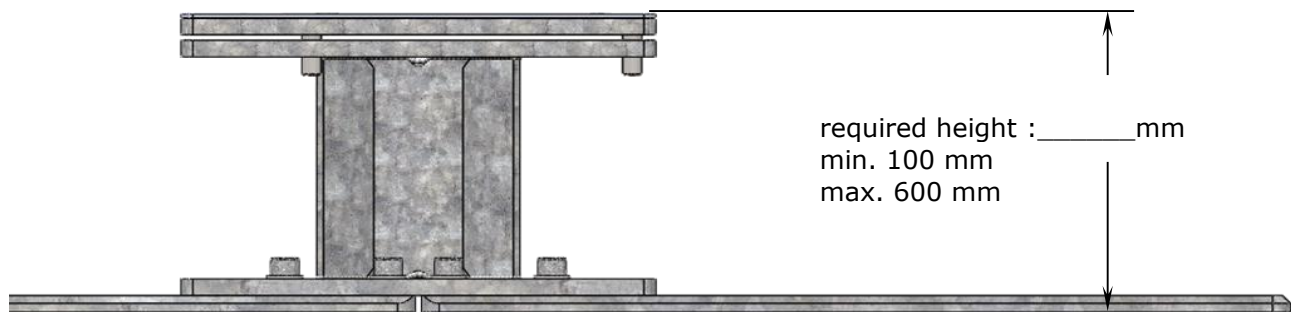
Freestanding base plate, 1470x1470x15mm,
1 layer, approx. 322 kg, with placement hinge,
AZ256



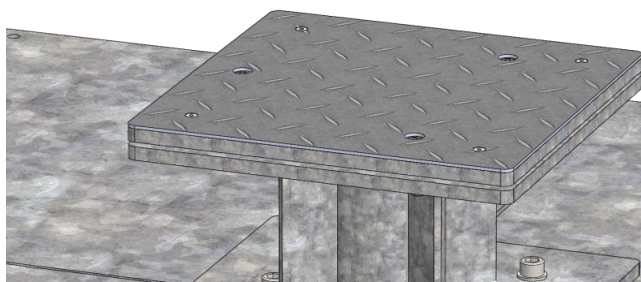
This order sheet must be filled out completely and supplied to the MAY company before production.

Art. no. AZ256: Multi-piece, screw-off upper part and base spacer, for centre pole- \varnothing 100 mm,
Lower part of AZ256 (351272) with top plate for winter protection.

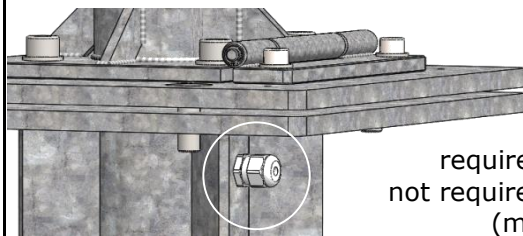
All bases are custom-made. When ordering, please state the total height required, including winter top plate.



winter top plate



Cable gland for tension relief. Only necessary if power supply is planned.



required _____
not required _____
(mandatory)

When ordering, please fill in the fields below:

Quantity: _____ (mandatory)

(Dealer-) Name and address: _____ (optional)

(Dealer-) Commission: _____ (optional)

(Dealer-) Order number: _____ (optional)

(Dealer-) Name of clerk in charge: _____ (optional)

Order placed: _____ (mandatory)

Name

Date

Only for May Gerätebau GmbH:

Order number: _____

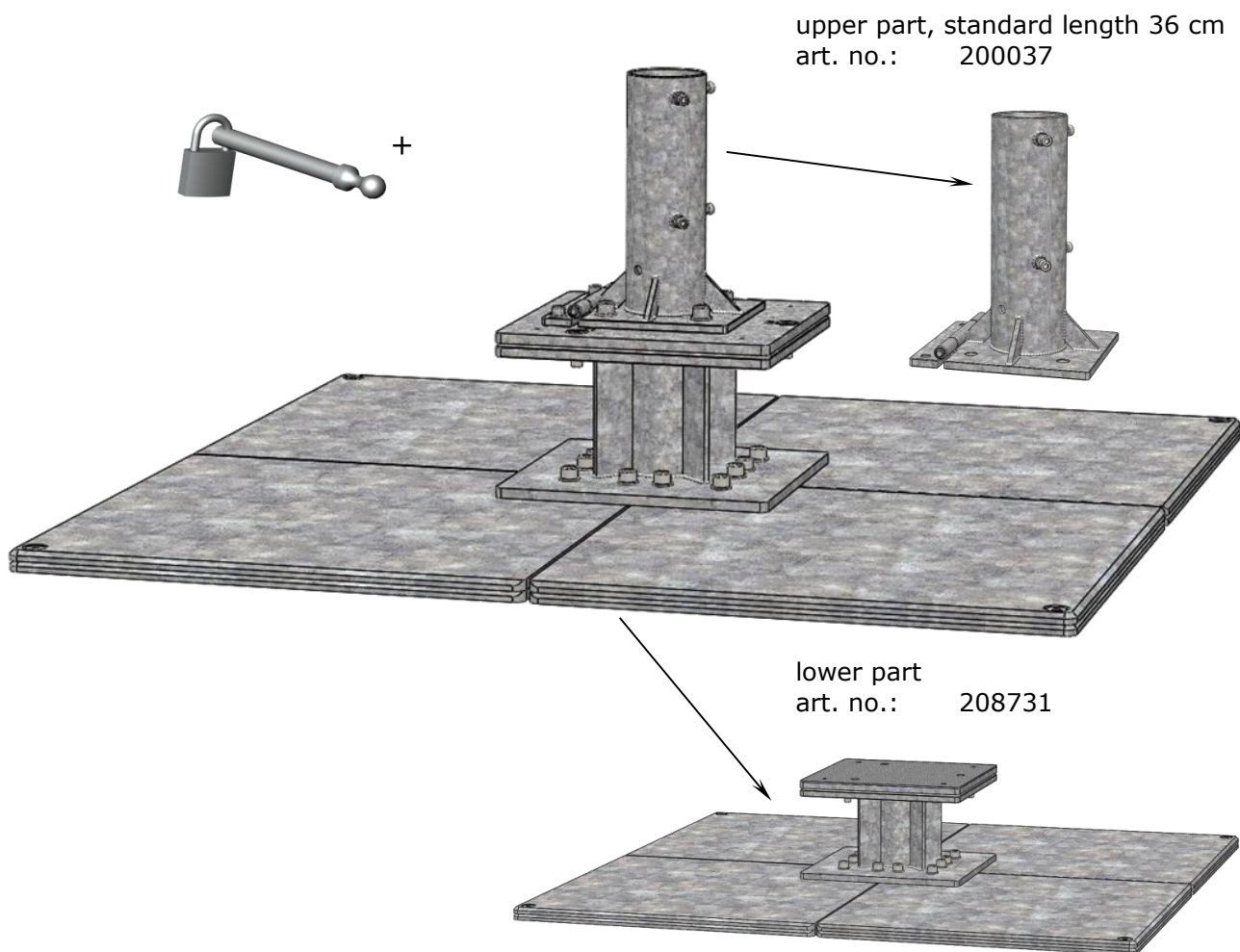
Freestanding base plate, 1470x1470x15mm, 2 layer, approx. 568 kg, with placement hinge, AZ257



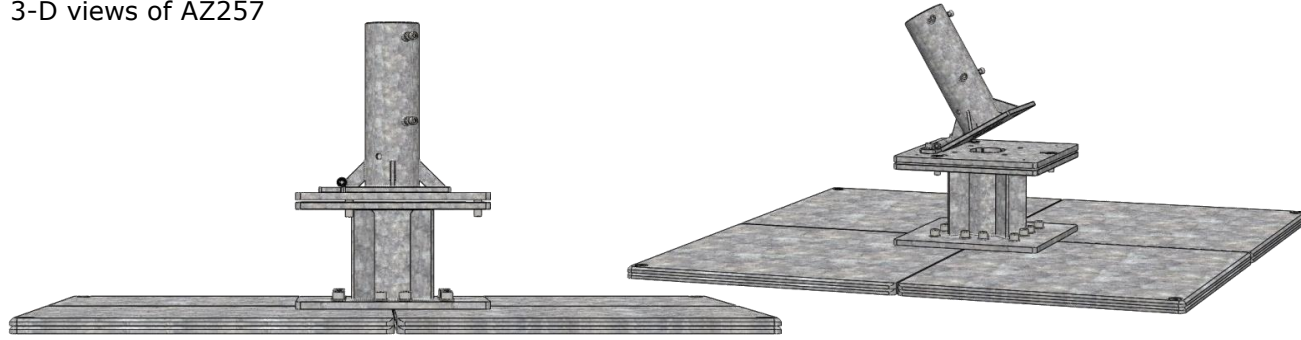
This order sheet must be filled out completely and supplied to the MAY company before production.

Art. no. AZ257: Multi-piece, screw-off upper part and base spacer, for centre pole- \varnothing 100 mm, mounted on site, heaviest part approx. 63 kg, base plate size: 147x147 cm, steel plate thickness $x = 15$ mm, hot-dip galvanised.

delivery content: inclusive pin and padlock, art. no. 200826



3-D views of AZ257



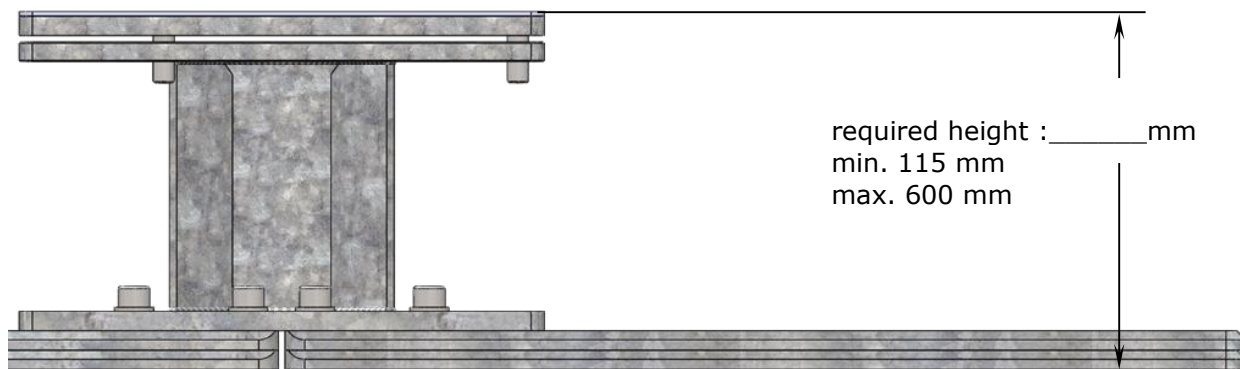
Freestanding base plate, 1470x1470x15mm,
2 layer, approx. 568 kg, with placement hinge,
AZ257



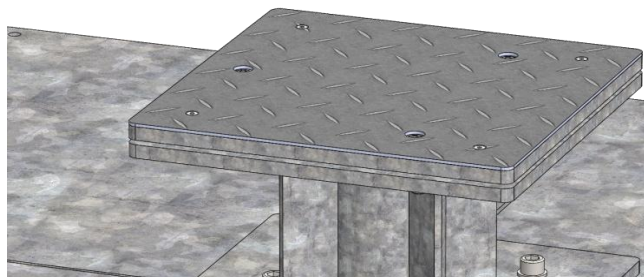
This order sheet must be filled out completely and supplied to the MAY company before production.

Lower part of AZ257 (208731) with top plate for winter protection.

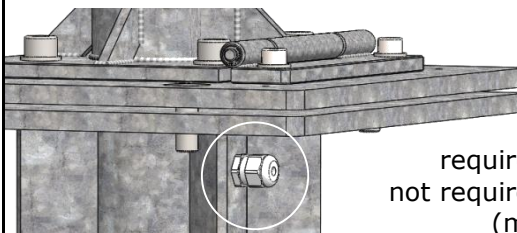
All bases are custom-made. When ordering, please state the total height required, including winter top plate.



winter top plate



Cable gland for tension relief. Only necessary if power supply is planned.



required _____
not required _____
(mandatory)

When ordering, please fill in the fields below:

Quantity: _____ (mandatory)

(Dealer-) Name and address: _____ (optional)

(Dealer-) Commission: _____ (optional)

(Dealer-) Order number: _____ (optional)

(Dealer-) Name of clerk in charge: _____ (optional)

Order placed: _____ (mandatory)

Name

Date

Only for May Gerätebau GmbH:

Order number: _____

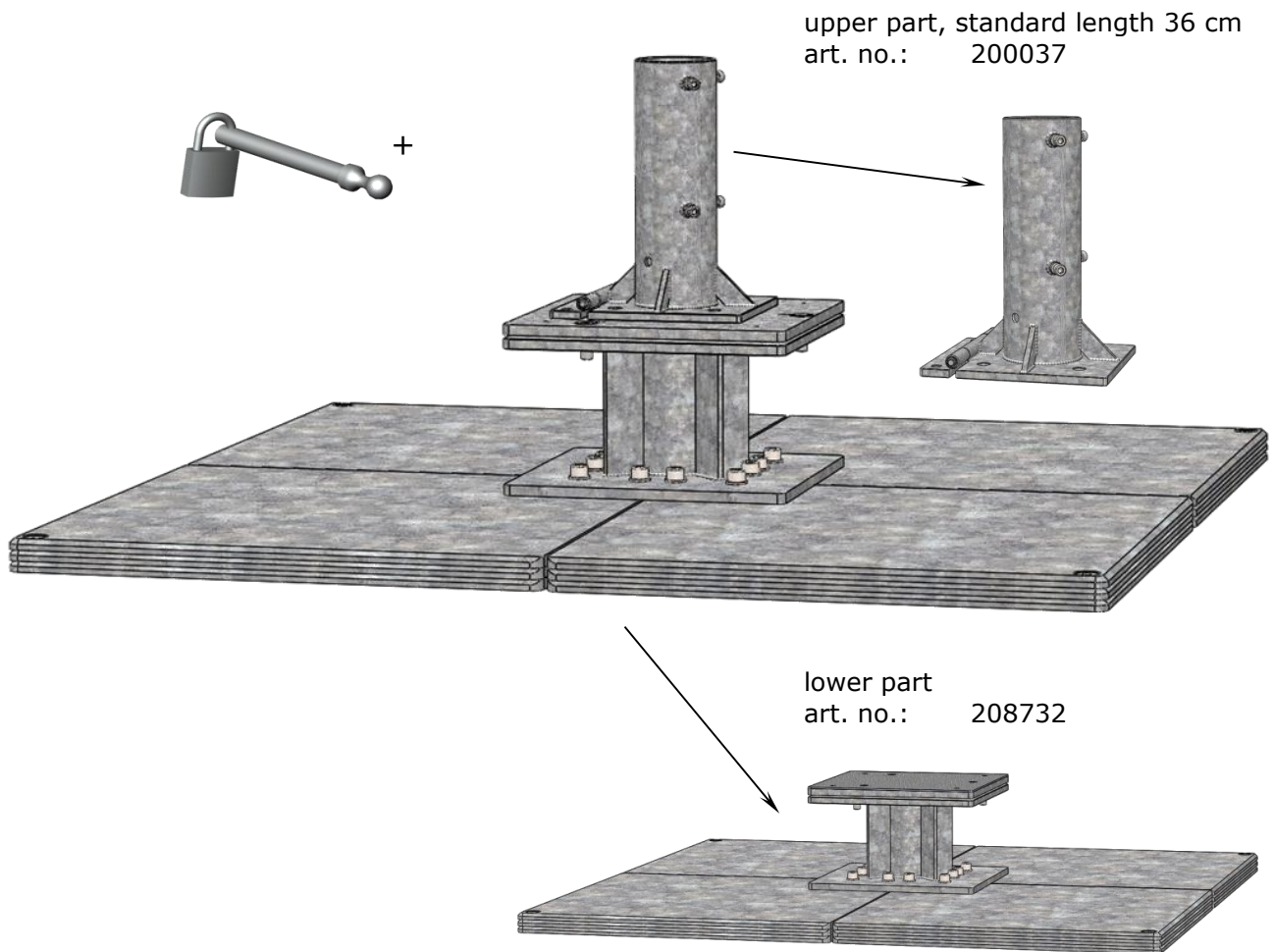
Freestanding base plate, 1470x1470x15mm,
3 layer, approx. 817 kg, with placement hinge,
AZ258



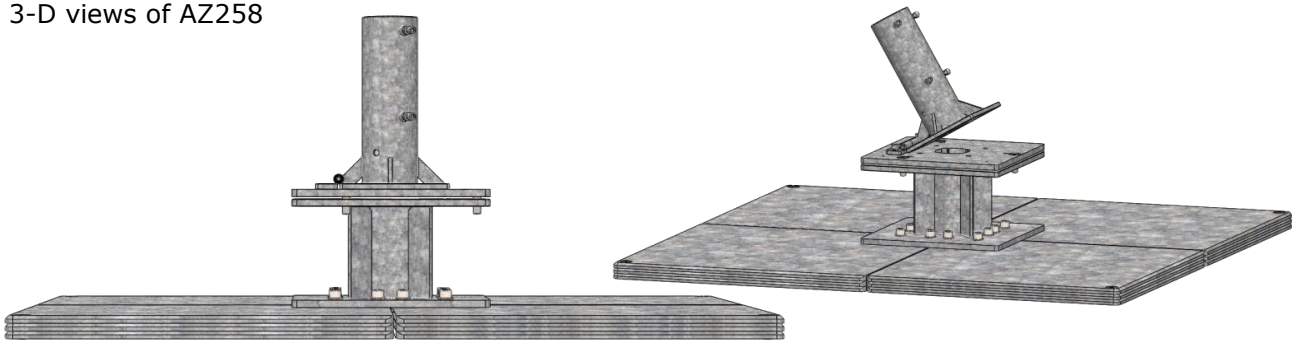
This order sheet must be filled out completely and supplied to the MAY company before production.

Art. no. AZ258: Multi-piece, screw-off upper part and base spacer, for centre pole- \varnothing 100 mm, mounted on site, heaviest part approx. 63 kg, base plate size: 147x147 cm, steel plate thickness $x = 15$ mm, hot-dip galvanised.

delivery content: inclusive pin and padlock, art. no. 200826



3-D views of AZ258



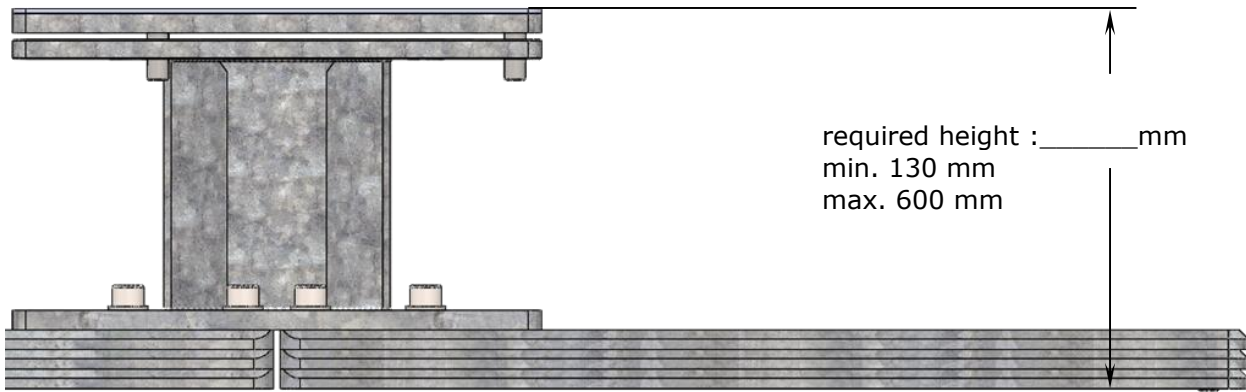
Freestanding base plate, 1470x1470x15mm,
3 layer, approx. 817 kg, with placement hinge,
AZ258



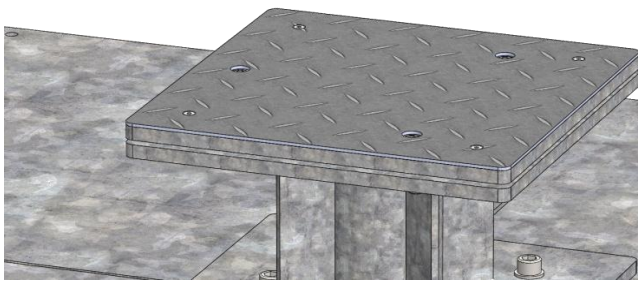
This order sheet must be filled out completely and supplied to the MAY company before production.

Lower part of AZ258 (208732) with top plate for winter protection.

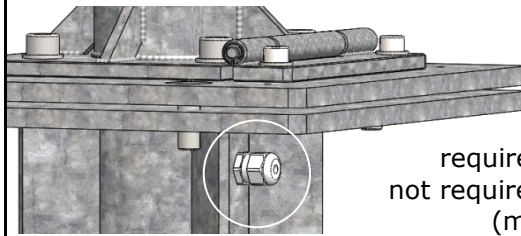
All bases are custom-made. When ordering, please state the total height required, including winter top plate.



winter top plate



Cable gland for tension relief. Only necessary if power supply is planned.



required _____
not required _____
(mandatory)

When ordering, please fill in the fields below:

Quantity: _____ (mandatory)

(Dealer-) Name and address: _____ (optional)

(Dealer-) Commission: _____ (optional)

(Dealer-) Order number: _____ (optional)

(Dealer-) Name of clerk in charge: _____ (optional)

Order placed: _____ (mandatory)

Name

Date

Only for May Gerätebau GmbH:

Order number: _____

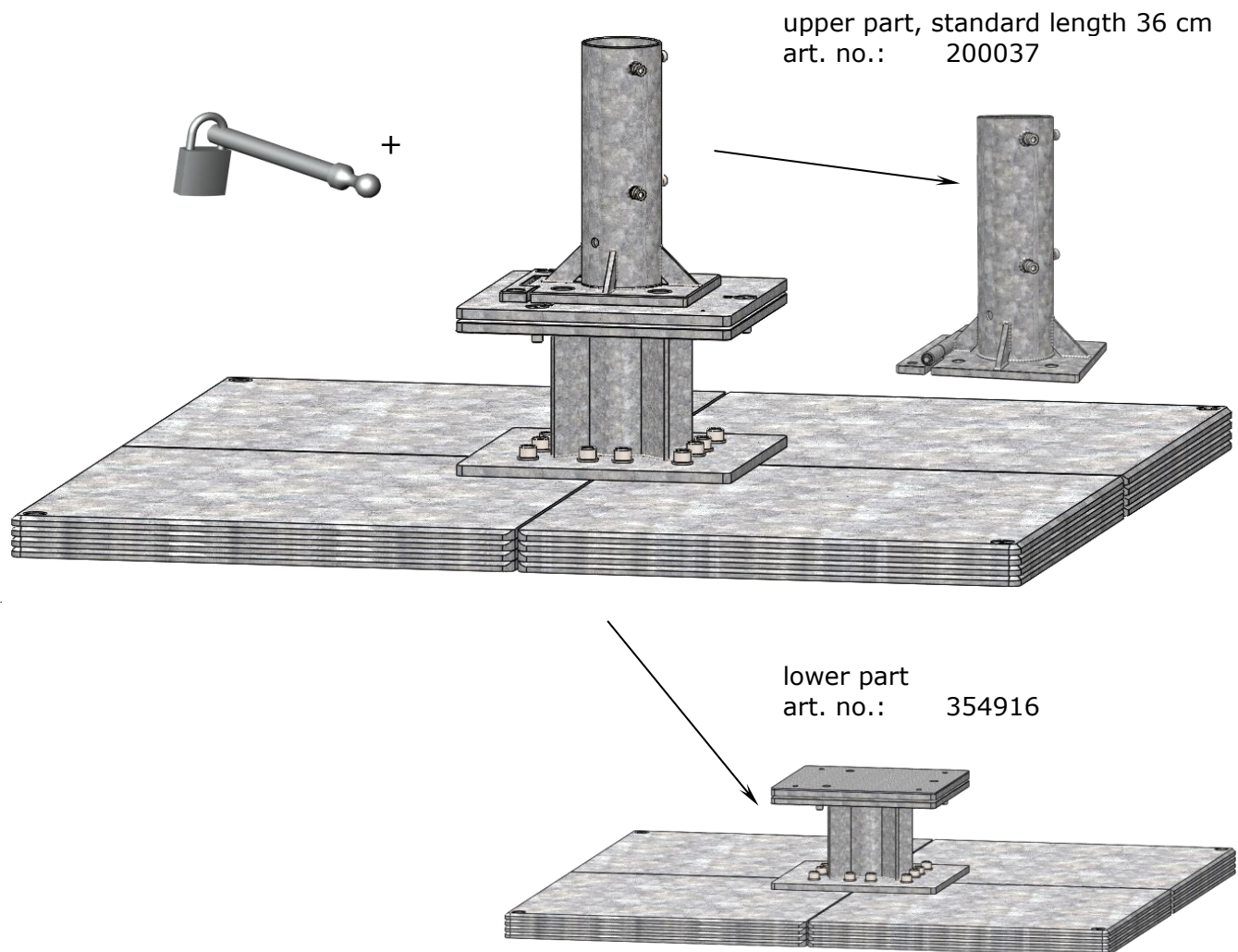
Freestanding base plate, 1470x1470x15mm,
4 layer, approx. 1,066 kg, with placement hinge,
AZ259



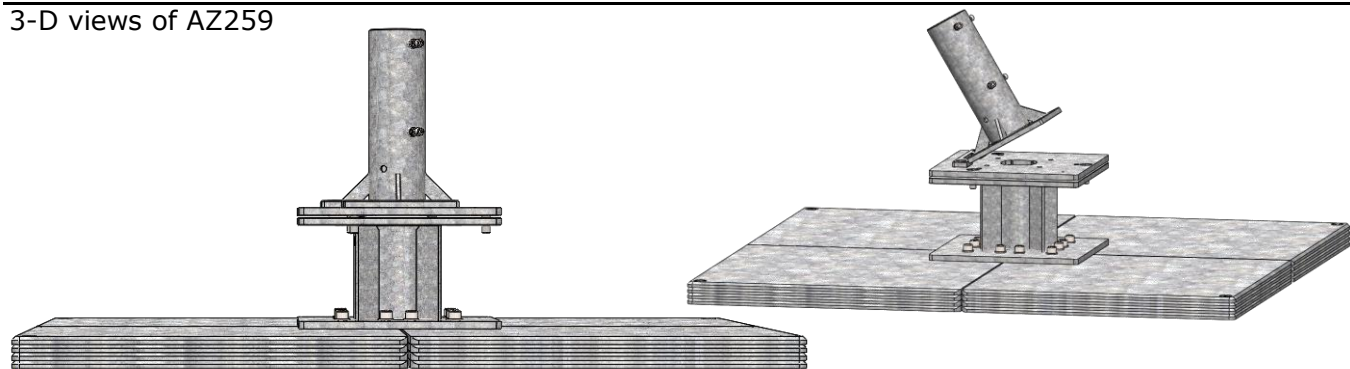
This order sheet must be filled out completely and supplied to the MAY company before production.

Art. no. AZ259: Multi-piece, screw-off upper part and base spacer, for centre pole- \varnothing 100 mm, mounted on site, heaviest part approx. 63 kg, base plate size: 147x147 cm, steel plate thickness $x = 15\text{mm}$, hot-dip galvanised.

delivery content: inclusive pin and padlock, art. no. 200826



3-D views of AZ259



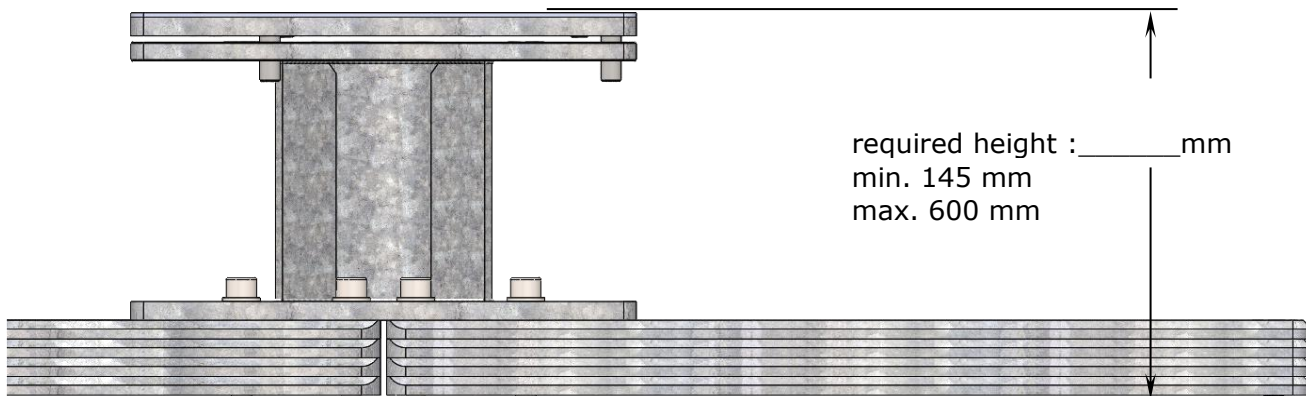
Freestanding base plate, 1470x1470x15mm,
4 layer, approx. 1,066 kg, with placement hinge,
AZ259



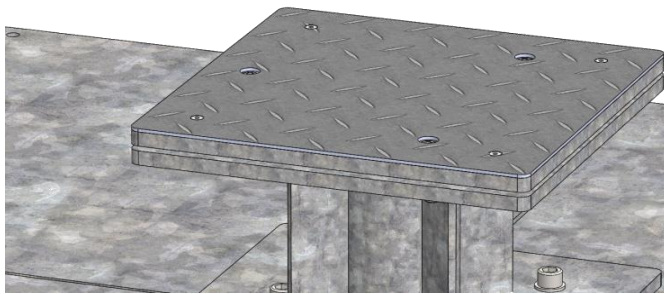
This order sheet must be filled out completely and supplied to the MAY company before production.

Lower part of AZ259 (354916) with top plate for winter protection.

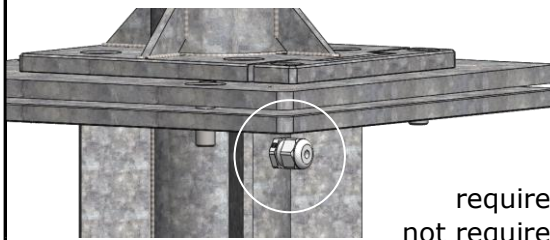
All bases are custom-made. When ordering, please state the total height required, including winter top plate.



winter top plate



Cable gland for tension relief. Only necessary if power supply is planned.



required _____
not required _____
(mandatory)

When ordering, please fill in the fields below:

Quantity: _____ (mandatory)

(Dealer-) Name and address: _____ (optional)

(Dealer-) Commission: _____ (optional)

(Dealer-) Order number: _____ (optional)

(Dealer-) Name of clerk in charge: _____ (optional)

Order placed: _____ (mandatory)

Name

Date

Only for May Gerätebau GmbH:

Order number: _____