

Installation instructions AZ210

Full-frame pedestal with screw-on upper anchor tube with placement hinge, for type ALBATROS

The following instructions include all information necessary for the installation and operation of this full frame pedestal. To avoid any misunderstanding we advise you to read these instructions carefully and then keep them for later reference.



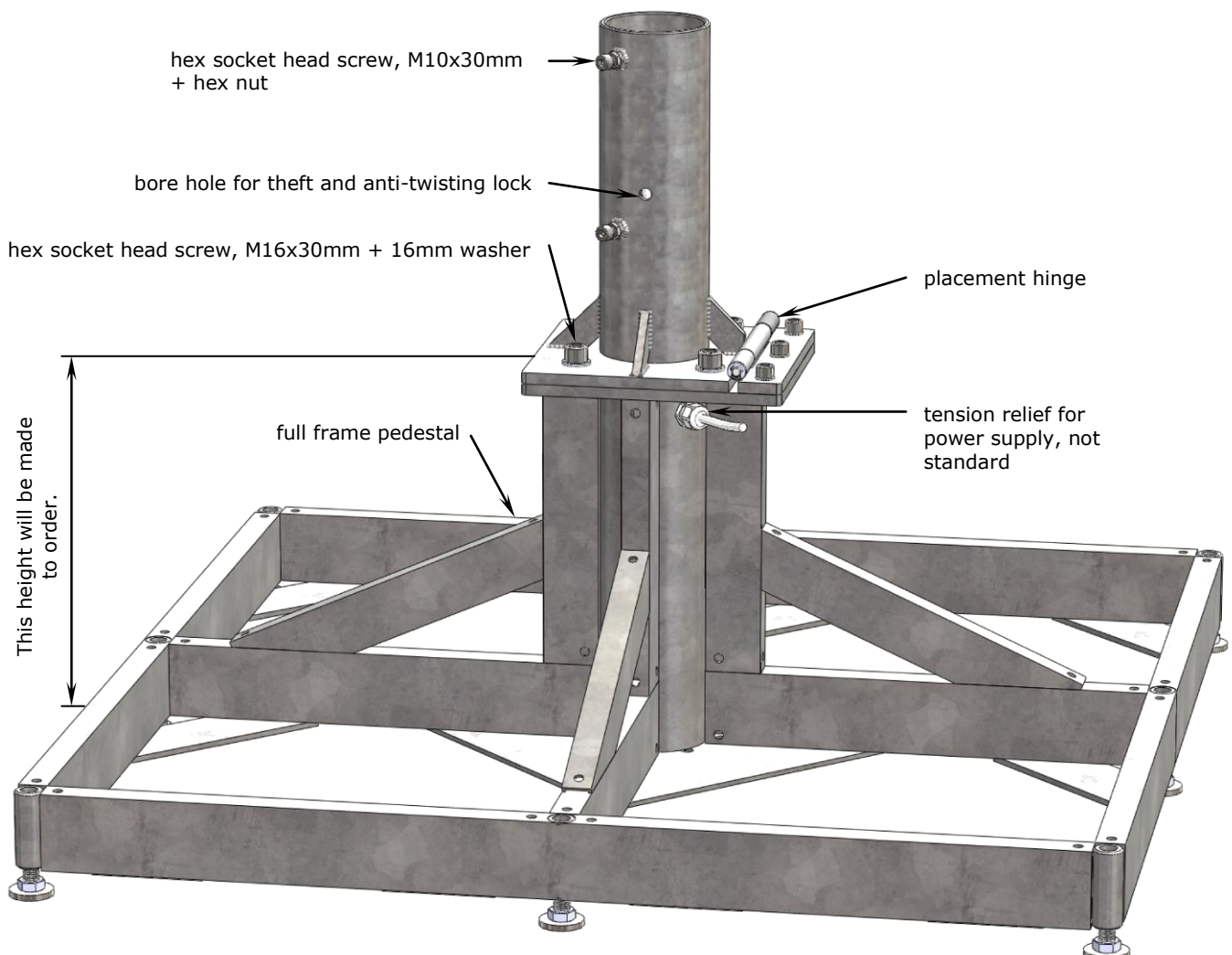
Caution

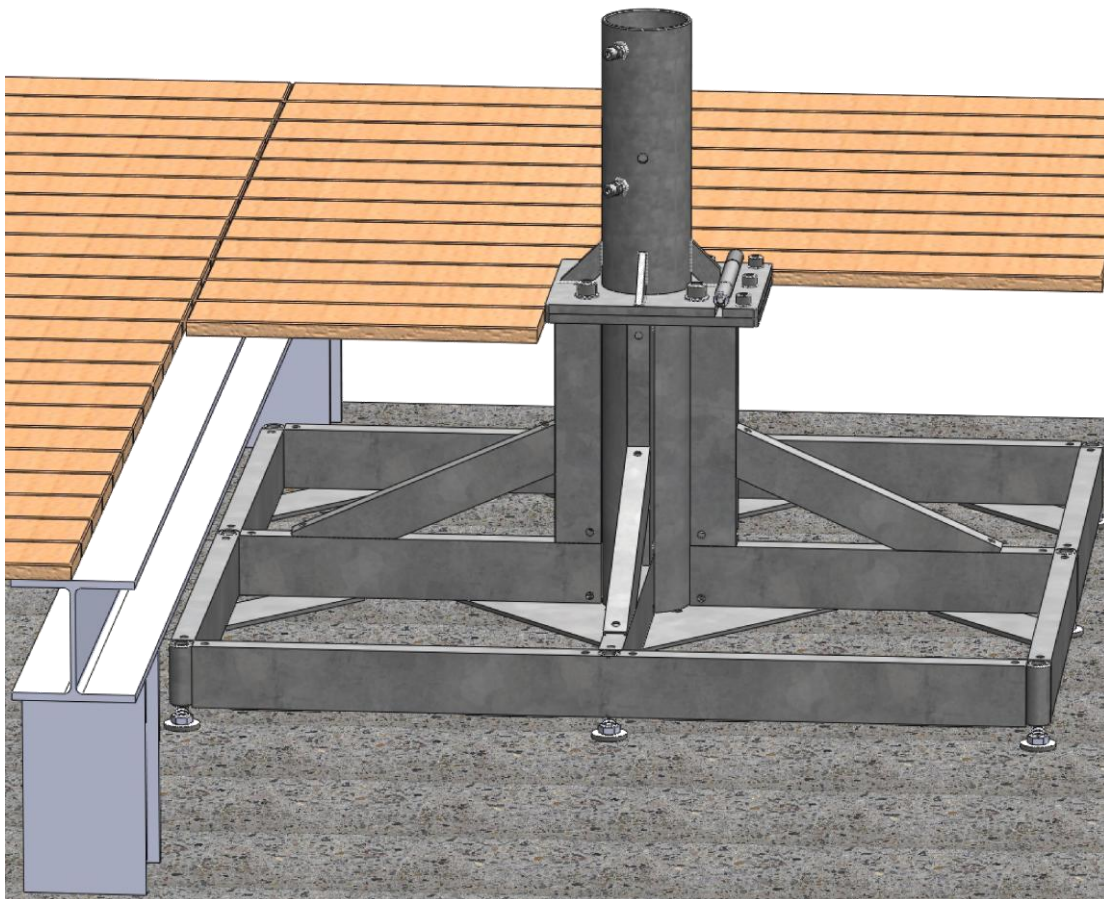
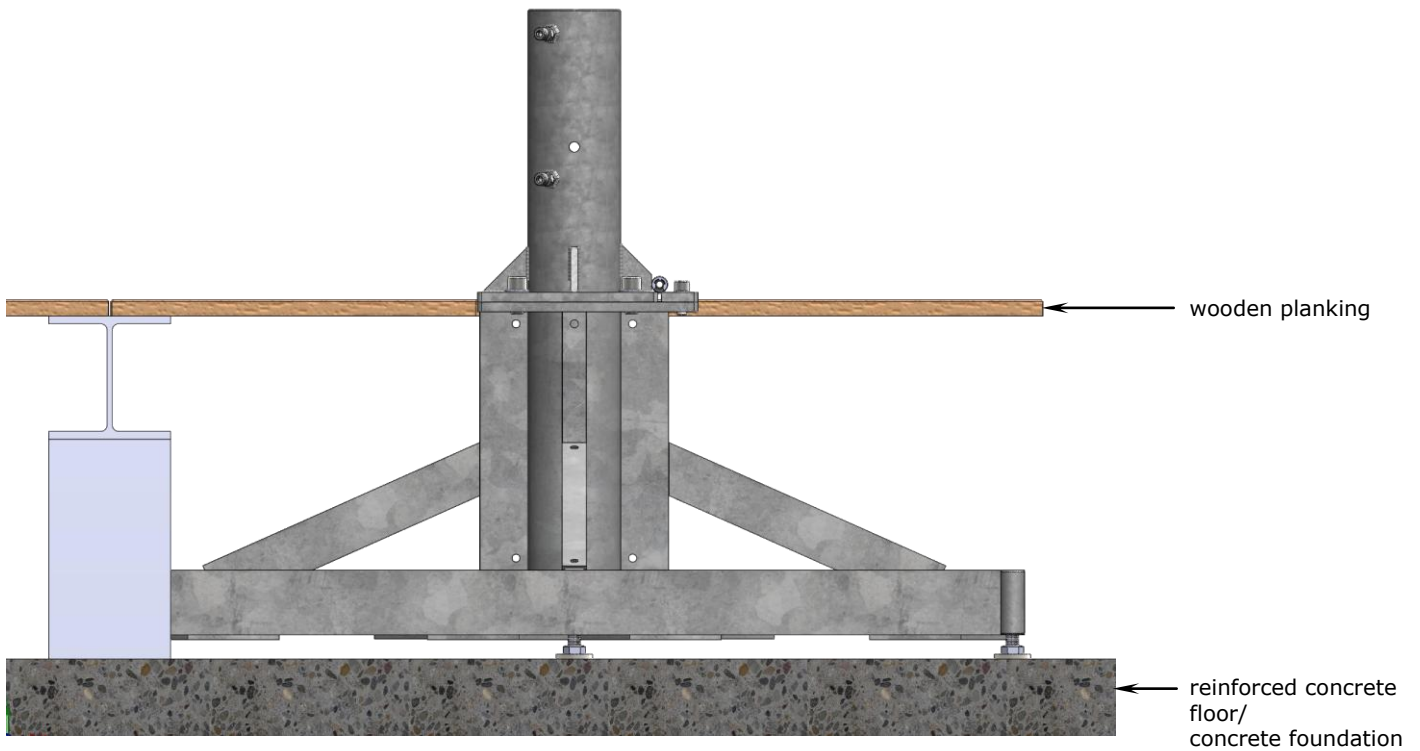
Non- observation of operating instructions can result in personal injuries or damage to property.

Please note that if these instructions are not observed, the manufacturer cannot assume any liability or guarantee.

- Always follow the safety regulations.
- Should you not understand any part of these installation instructions, please contact your MAY dealer.

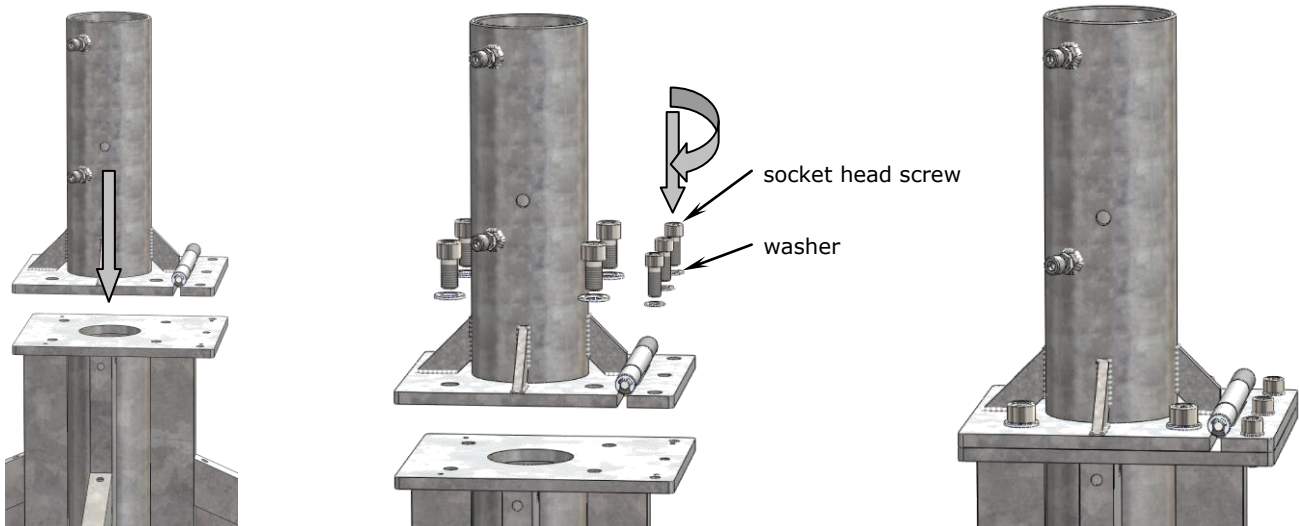
Diagram showing installation materials and tools





Mounting the upper anchor tube

1. Screw the upper anchor tube onto the frame plate (cf. illus.) To do so, slip the washers onto the socket head screws and tighten.



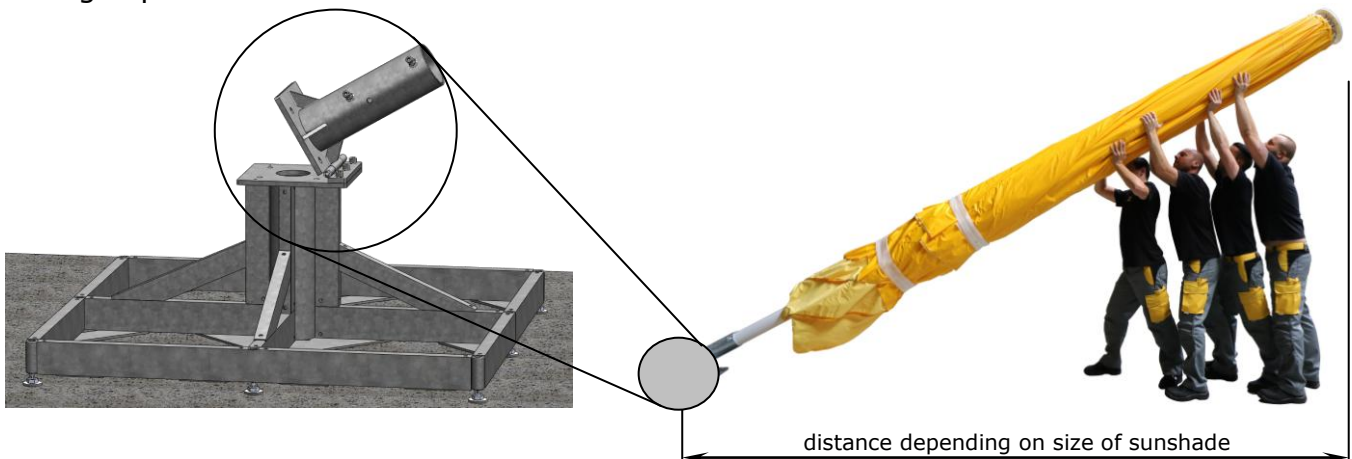
Caution

Screws that are not tightened correctly will work loose.

If screws are not tightened firmly enough, there will not be sufficient tensile force to trigger self-locking. If the screws are tightened too firmly and over-stressed, the screw connection MAY slacken.

- Tighten the screw manually using the enclosed hex key and extension. Exert as much force as possible. With the enclosed tools there is virtually no risk of over-stressing.
- The correct torque for a torque wrench on M16 socket head screws is 210 Nm.
- The correct torque for a torque wrench on M12 socket head screws is 93 Nm.

2. Choose the location for your AZ210. Put the placement hinge in a position that will allow enough space for the sunshade to be erected and dismantled.



3. Allow sufficient space between sunshades or between the wall of the building and the sunshade.



Caution

Sunshades that are located too close together wear sooner.

Sunshades MAY sway slightly. If there is not enough space between them, they MAY touch and abrade or scrape the canopy fabric at the spoke ends.

- Make sure that there is a clearance of approx. 30cm between the sunshades (or between sunshade and the wall of the building).
-

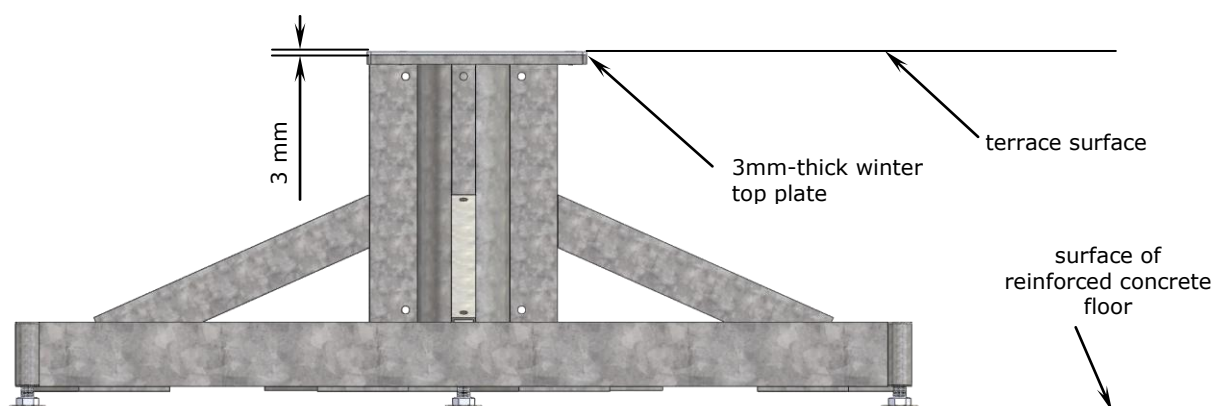
4. We would like to stress that uneven patios are no problem for us. We are able to compensate any unevenness of the ground by adjusting the height of each individual sunshade. Extra length upper anchor tubes are available at 10cm gradation and can be adjusted and accommodated on location.
 5. When setting the AZ210, make sure that the frame plate of the pedestal component is flush with the terrace floor surface. Place the full-frame pedestal in the required position.
-

Avoid tripping hazard.

Attention

To ensure that the winter top plate (needed as a protective cover in winter when the upper anchor tube has been removed) is flush, the frame plate of the pedestal must be set 3mm below the terrace surface (cf. illustration). This difference of 3mm corresponds to the space needed for the 3mm-thick checker plate for winter protection.

- Be sure to order the pedestal component with the correct height measurements, i.e. the distance between the top of the reinforced concrete foundation and the terrace floor surface. Please use our special MAY order form for custom-made production.
 - In case of doubt, state a measurement that is slightly too short. This can then be corrected by jacking up the pedestal with wedges. Measurements that are too long cannot be adjusted.
 - The frame pedestal must be sufficiently underpinned so that it lies absolutely flat and cannot sway when wind arises.
 - For height measurements take into consideration that the winter top plate is 3 mm thick.
-



6. As a rule, the reinforced concrete floor is not completely even, meaning that the sunshade will not necessarily stand completely upright.

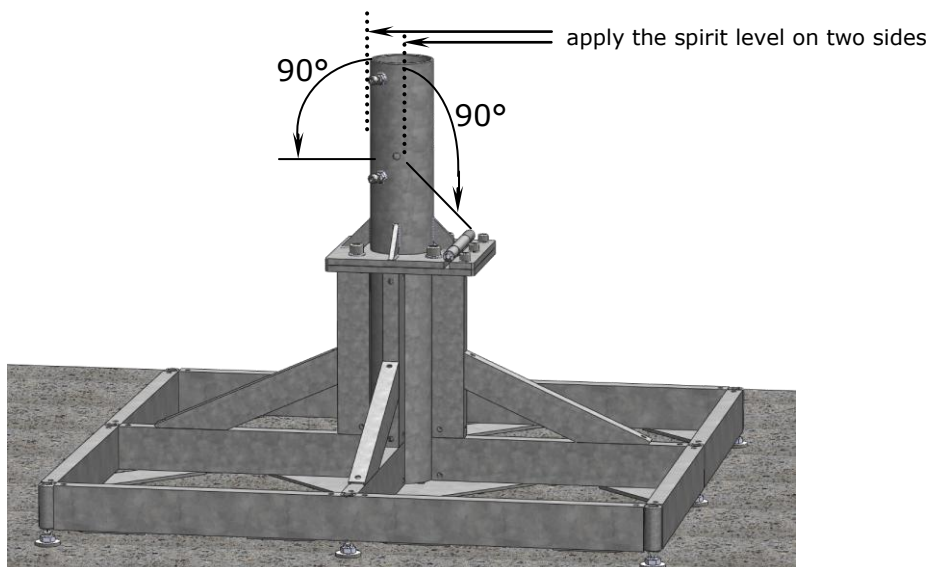


Attention

In order to ensure that the upper anchor tube and the sunshade are in a vertical position, the pedestal frame must be aligned horizontally.

Align the pedestal frame into horizontal position.

- Use wedges under all four corners to even the frame into horizontal position.
- If the full frame pedestal is properly underpinned, surface pressure will ensure that the separation layer (bitumen layer) under the frame will not be damaged.
- Use a spirit level to align the AZ210. (cf. illustration)



7. Place concrete slabs into the frame. In the chart below you can see how many 28 kg concrete slabs you will need for your sunshade:

Size of sunshade	Number of concrete slabs needed
Ø 4m, 3.5x3.5m, 3x4m, 4x5m	6 slabs, 24 pieces
Ø 4.5m	7 slabs, 28 pieces
Ø 5m, Ø 7m, 4x4m	8 slabs, 32 pieces
Ø 6m, 3x6m, 5x7.5m,	9 slabs, 36 pieces
Ø 9m, 4.5x4.5m, 6x6m, 4x6m, 4x8m, 5x5.85m, 6x7m,	10 slabs, 40 pieces
Ø 7m, Ø 8m, 5x5m, 5.5x5.5m, 7x7m, 3.5x7m,	11 slabs, 44 pieces
Ø 9m	12 slabs, 48 pieces
Ø 10m	14 slabs, 56 pieces
7x8m	16 slabs, 64 pieces

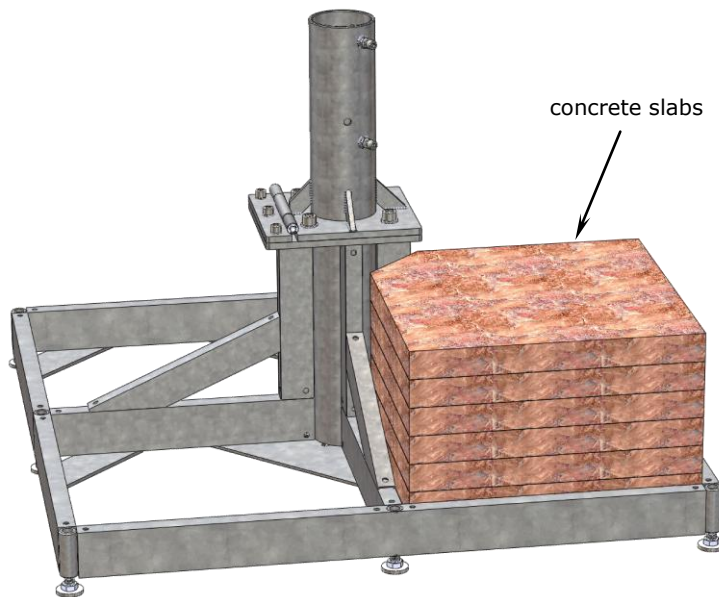


Attention

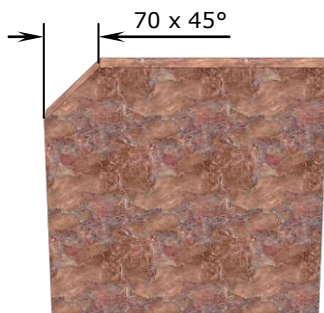
A falling sunshade can cause serious or even fatal injury.

If the number of concrete slabs in the frame does not correspond with the size of the umbrella, the sunshade MAY fall and cause injuries.

- Observe the information given in the above chart.
 - In windy locations the number of slabs must be increased
-

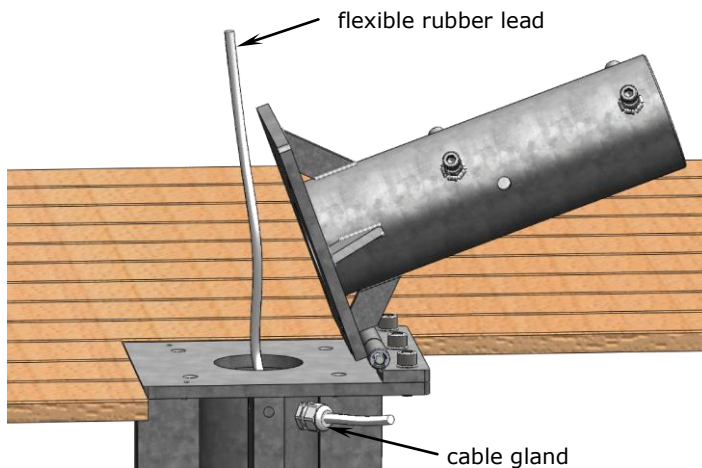


8. To be able to place the concrete slabs into the frame, one corner of each slab must be cut off (70mm x 45°).



Power supply (optional)

1. Press the flexible connecting rubber lead (certified approval for outdoor use necessary) through the cable gland and tighten the nut so that the rubber is narrowed and tension relief is provided.



2. The connection of ground cable and power supply for the umbrella must be absolutely waterproof. The ground cable (for heavy current: min. 5-pole, min. 4mm², cable cross section) must be laid to suit the electric load and the length of the lead wire by a qualified electrician.



Electric installation work should be carried out solely by a certified electrician. Disregarding this warning MAY result in serious personal injuries.



To avoid personal injury in case of faults.

Water in the plug connector can lead to a short circuit. Protect the connector against any water.

- Secure umbrella with a 30mA RCBO protective switch.
- According to law, the functioning of protective switches must be checked at least every six months.



Caution

Danger of short circuit.

Water in the plug connector can lead to a short circuit. Protect the connector against any water.

- Make sure that the plug connector remains above the ground when the sunshade is erected, or seal the connector with silicon (or the like) to make it 100% waterproof.
-

3. Wire colours:

green-yellow	= protection
blue	= neutral
brown	= light (if used)
black	= heating (if used)
black	= heating (if used)

Storage/Dismounting

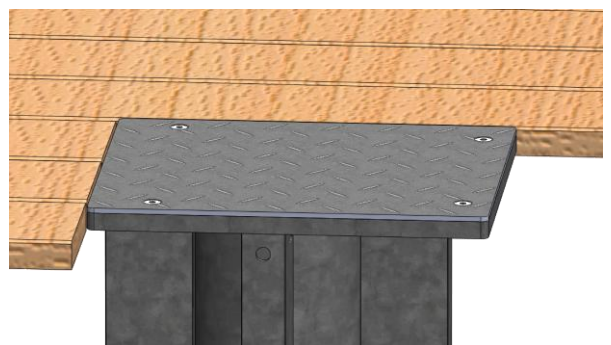
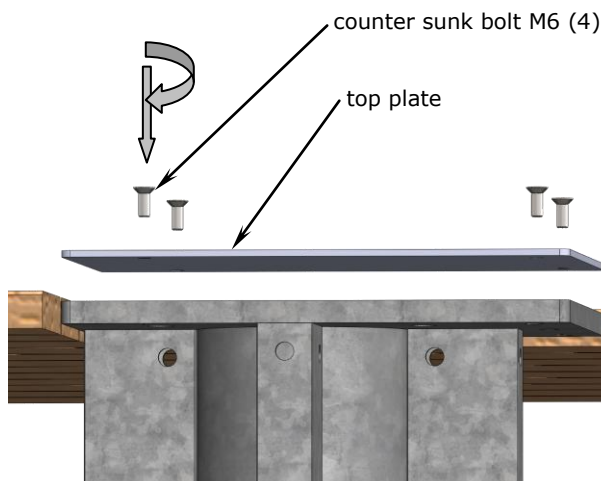
1. Lift the sunshade out of the anchor foot.
2. Remove the upper anchor tube completely by screwing it off.
3. Screw the top plate onto the lower anchor tube. (cf. illus.)



Caution

The thread can get damaged.

When the top plate is not on the lower anchor tube, sand MAY get washed into the flanks of the thread. As sand is harder than steel, the thread MAY get damaged when the screw is turned.



4. If you have two or more sunshades, it is advisable to mark them and their accessories (e.g. with metal-stamped numerals or using a waterproof marker) as soon as they have been dismantled (e.g. for winter storage).

Marking saves a lot of time and helps to keep things in order.**Tip**

If clearly marked, each sunshade can easily be assigned to its proper location and re-erected parallel to the wall of the house or next to the others.

- For clear and easy later assignment use the same number to mark the centre pole, the upper anchor tube and the lower anchor tube. For example, for sunshade No. 1, all three parts should carry number 1, all three parts of sunshade No. 2 should be marked with a 2, etc.

-
5. Grease the screws regularly to prevent them from rusting.

Project management

All persons involved should discuss this installation option on site. If these instructions are provided to everyone during the planning period, arguments can be harmonised and therefore unnecessary costs for incorrect planning can be saved. In case this installation option is found not to be suitable, you may select another option from the MAY program. Customized options are available upon request depending on complexity.

Following parties may be involved:

1. House owner: Approval of project, assumption of costs, order placement, etc.
2. Leaseholder / gastronome: Is the positioning of the parasols suitable for the seating, assumption of costs, etc.
3. Architect: General legal planning, positioning, statics of the flat roof (dynamic and static load by weight and wind), control and supervision of the workmen, etc.
4. Workmen: Roofer clarifies and mounts the installation option, pay attention to waterproofing sealing, setting heavy-duty anchor bolts, etc.
5. Electrician: Defines electrical connection, clarifies cable and control, etc.

Full frame pedestal with placement hinge, AZ210



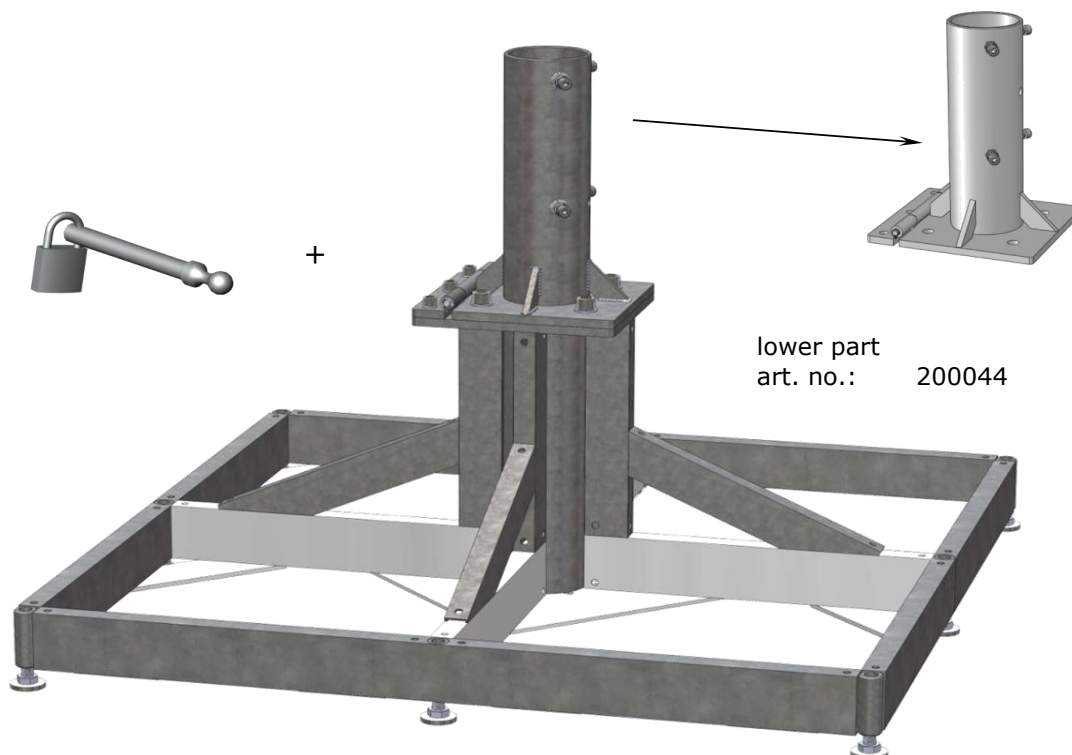
This order sheet must be filled out completely and supplied to the MAY company before production.

art. no. AZ210: 2 pieces, screw-off upper part, fits for pole \varnothing 100 mm

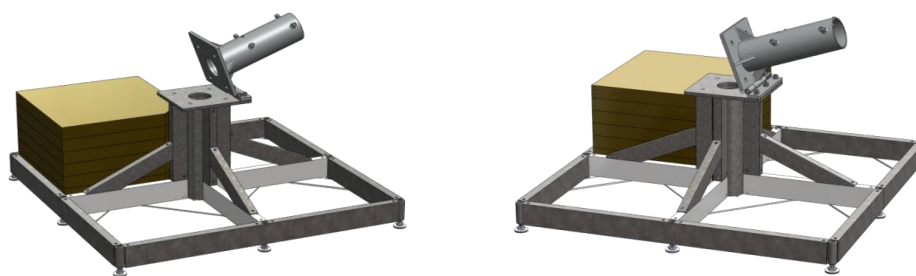
delivery content: inclusive pin and padlock, art. no. 200826

upper part
art. no.: 200037

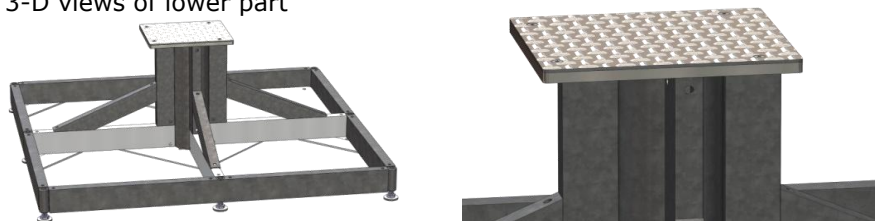
lower part
art. no.: 200044



3-D views of AZ210



3-D views of lower part



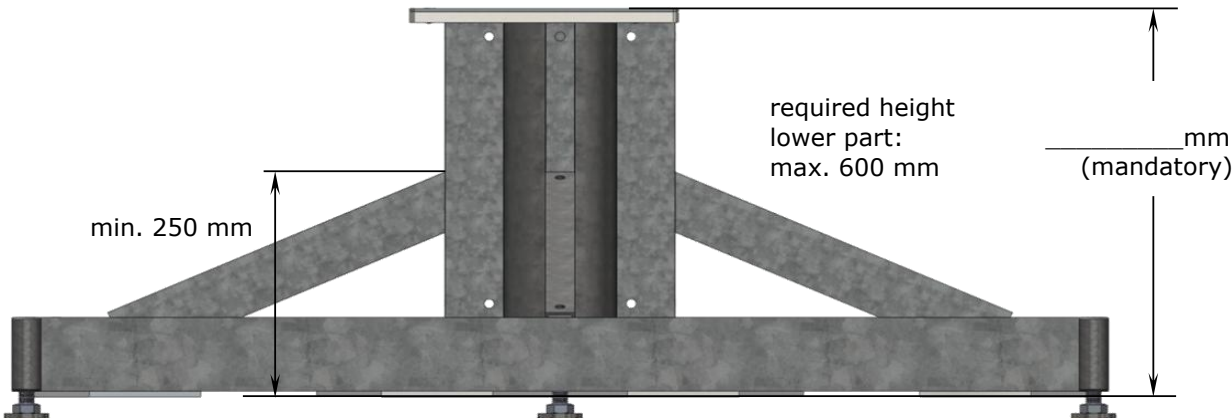
Full frame pedestal with placement hinge, AZ210



This order sheet must be filled out completely and supplied to the MAY company before production.

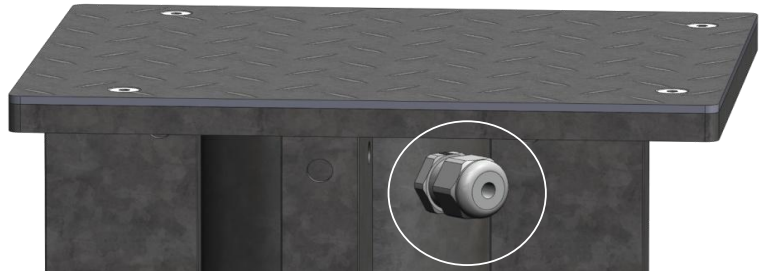
Lower part of AZ210 (200044) with top plate for winter protection.

All bases are custom-made. When ordering, please state the total height required, including winter top plate.



Adjustable height of pedestal feet: min. 2 cm, max. 5.5 cm.

Cable gland for tension relief. Only necessary if power supply is planned.



required _____ (mandatory)
not required _____

When ordering, please fill in the fields below:

Quantity: _____ (mandatory)

(Dealer-) Name and address: _____ (optional)

(Dealer-) Commission: _____ (optional)

(Dealer-) Order number: _____ (optional)

(Dealer-) Name of clerk in charge: _____ (optional)

Order placed: _____ (mandatory)

Name

Date

Only for May Gerätebau GmbH:

Order number: _____