

Mounting instructions gabion basket and seat plate

for type FILIUS, DMZ411, DMZ412 und DMZ420

The following instructions include all information necessary for the assembly and operation of this gabion basket. To avoid any misunderstanding, we advise you to read these instructions carefully and then keep them for later reference.



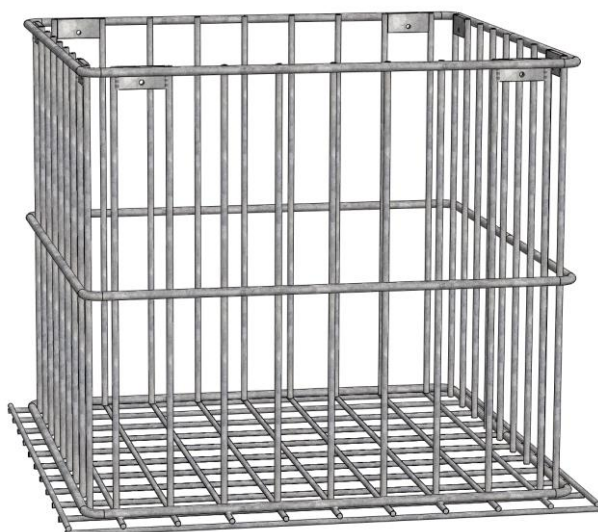
Caution

Non- observation of mounting instructions can result in personal injuries or damage to property.

Please note that if these instructions are not observed, the manufacturer cannot assume any liability or guarantee.

- Always follow the safety regulations.
- Should you not understand any part of these mounting instructions, please contact your MAY dealer.

Scope of delivery



Gabion basket

steel, hot dip galvanized
art. no. 360098

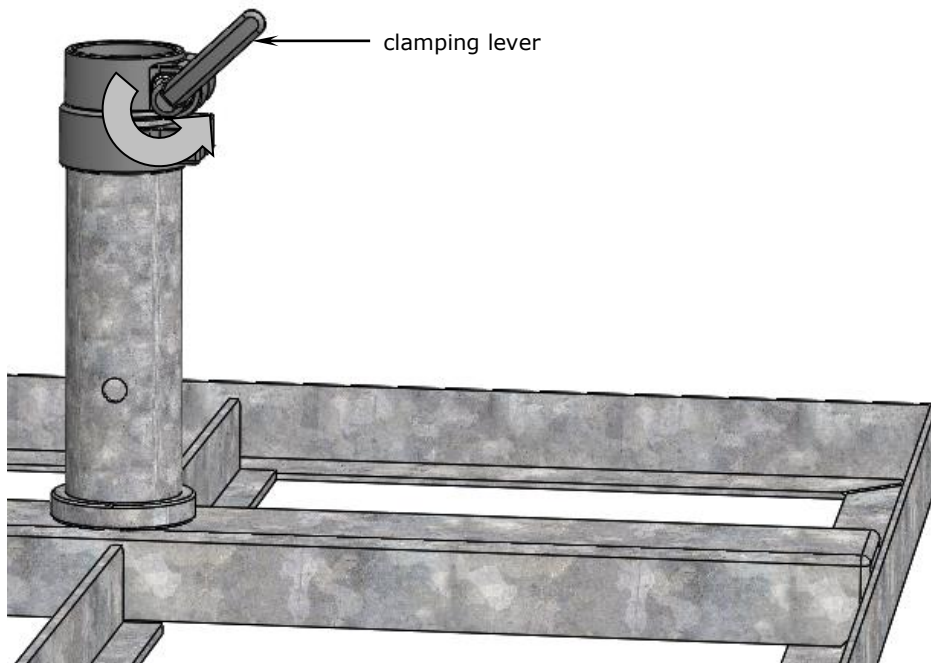


Seat plate

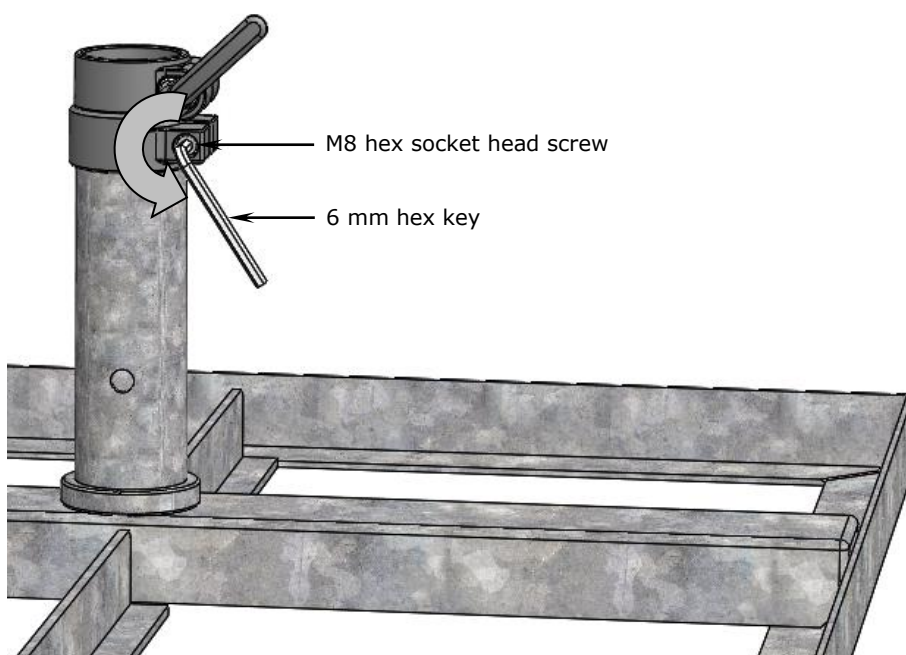
HPL material, grey decor,
4 screws included
art. no. 360099

Assembly

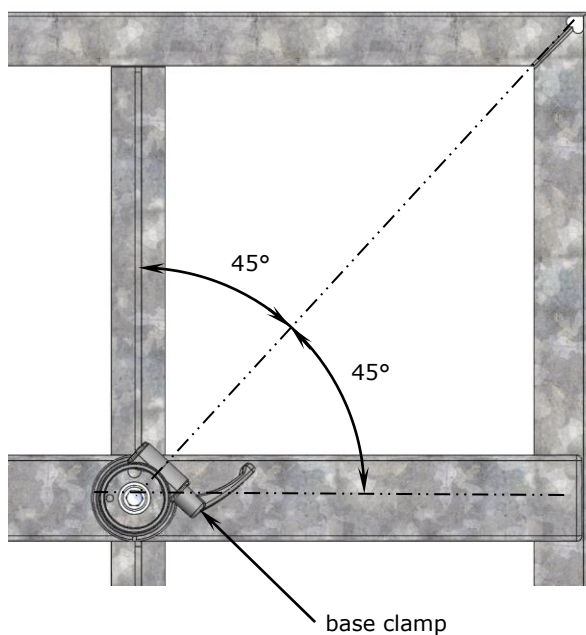
1. Loosen the clamping lever of the base clamp so that you can carry out point 2.



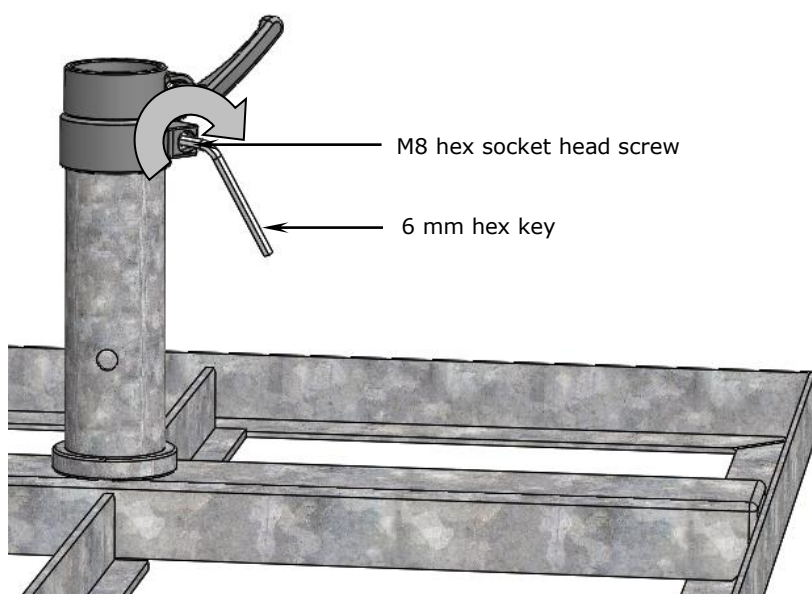
2. Loosen the M8 hex socket head screw using a 6 mm hex key. Turn the screw anti-clockwise, two turns are sufficient.



3. Align the base clamp as shown.



4. Fix the M8 hex socket head screw with the 6 mm hex key.



5. Before assembly, the parasol must be erected, opened and aligned. You will find the detailed instructions in the manual „MAY FILIUS DMZ118 Operating instructions“.



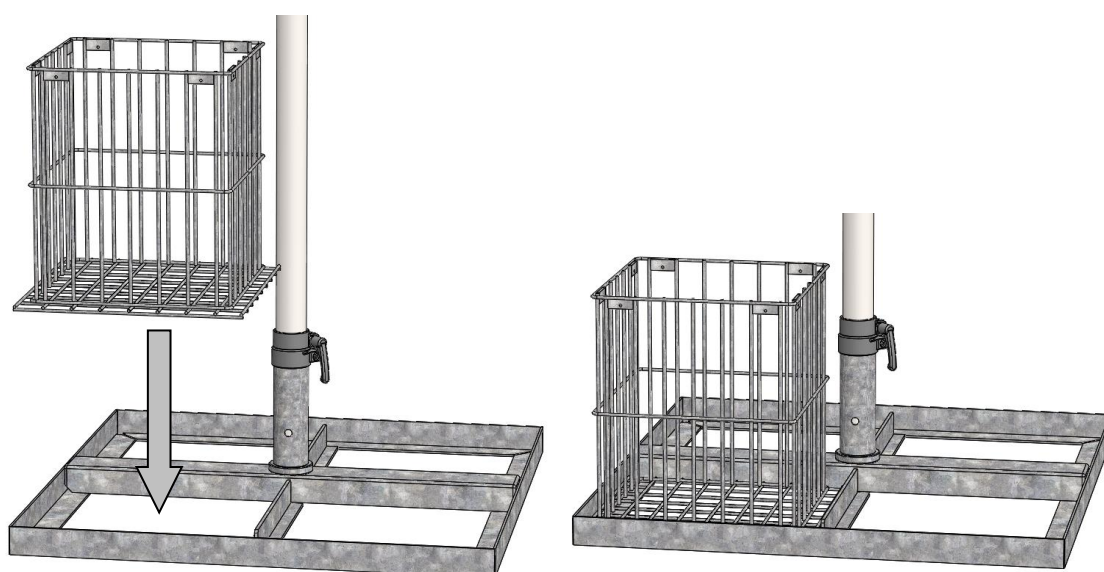
Danger

If the parasol is not fully anchored, it can cause serious or even fatal injury.

If the wedge base clamp loosens or is not tightened, the parasol can be lifted by the wind.

- Tighten the clamping lever firmly.

6. Put the gabion basket into the pedestal.



7. Get the stones you would like to use. The grain size must not be less than 60/90mm or at least larger than the wire mesh size 50 mm. In case of a grain size of 60/90 mm the filling (clear width 335 x 335 mm, height 390 mm) reaches a load of approximately 66 kg. If required, please follow the table below:

Size of parasol	Total weight all gabion baskets including stones
FILIUS, all sizes	min. 140 kg, optimally min. 2 filled gabion baskets

8. Fill the gabion baskets with the stones.

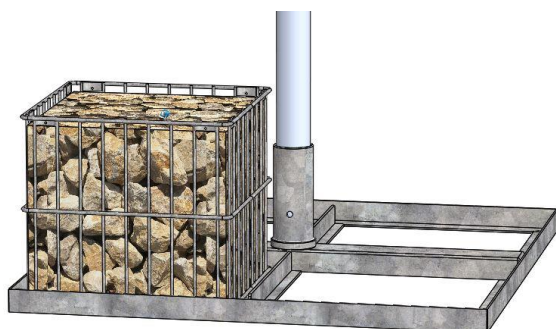


Danger

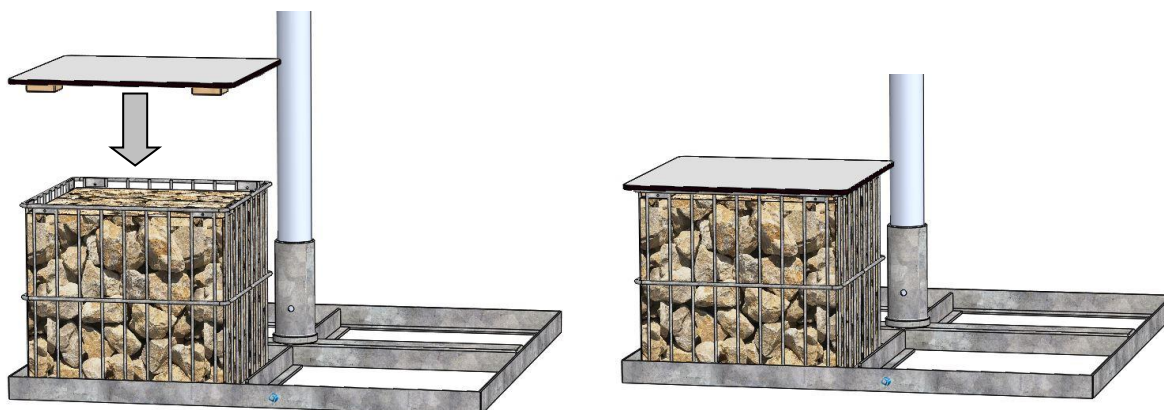
A falling parasol can cause serious or even fatal injury.

If the pedestal is not equipped with sufficient weight according to the size of the parasol, the parasol may fall and cause injuries.

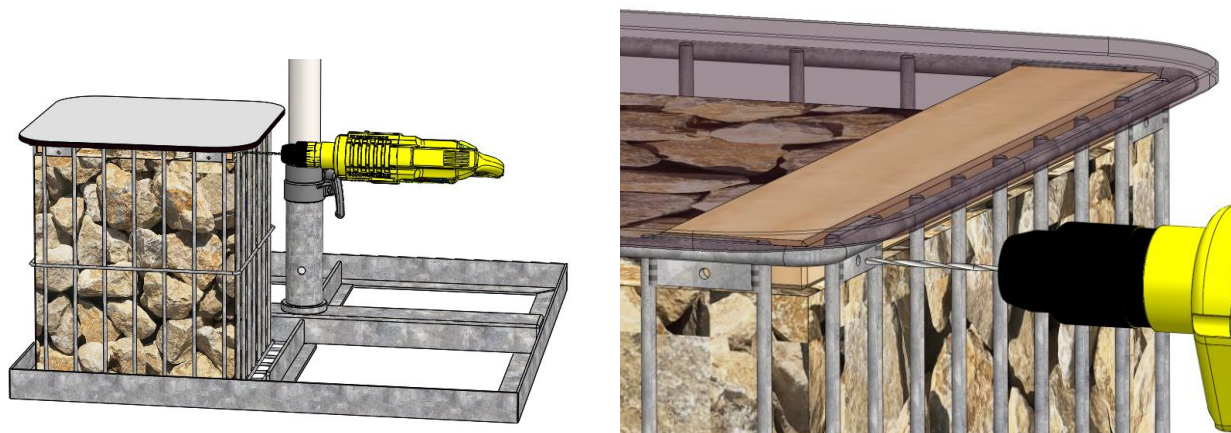
- Observe the information given in the above chart.
 - In windy locations the weight must be increased.
-



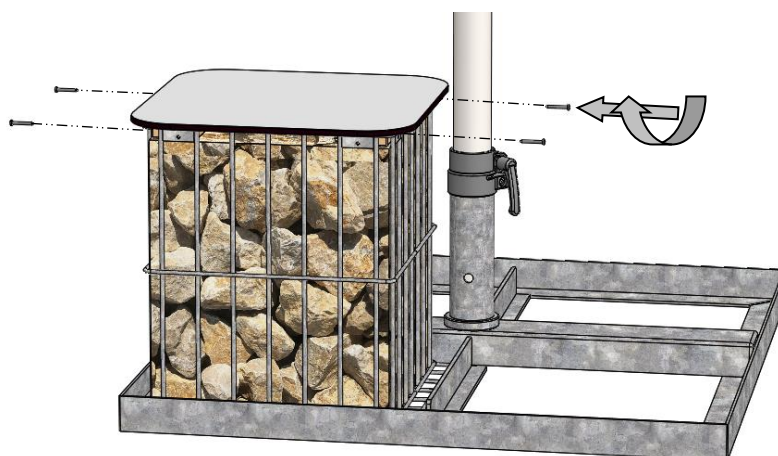
9. Put the seat plate into the gabion basket. Use the purchased MAY HPL seat plate (article no. 360099), or design your individual seat. Therefore, you will find sketches in the following chapter "DIY seating".



10. Pre-drilling: Drill 4 holes in the wooden slats using a \varnothing 2.5 mm drill bit. Drill through the holes in the metal fastening tabs in the long side of the wooden moulding.



11. Use a torx 20 to fix the seat plate with the 4 screws delivered. There is one screw for each corner.



12. Repeat these steps for all gabion baskets.

