

Mounting instructions gabion basket and seat plate

for type SCHATTELLO, SZ411, SZ412, SZ420, SZ201, SZ203 and SZ206

The following instructions include all information necessary for the assembly and operation of this gabion basket. To avoid any misunderstanding, we advise you to read these instructions carefully and then keep them for later reference.



Caution

Non- observation of mounting instructions can result in personal injuries or damage to property.

Please note that if these instructions are not observed, the manufacturer cannot assume any liability or guarantee.

- Always follow the safety regulations.
- Should you not understand any part of these mounting instructions, please contact your MAY dealer.

Scope of delivery



Gabion basket

steel, hot dip galvanized
art. no. 357885



Seat plate

HPL material, grey decor,
4 screws included
art. no. 357890

Assembly

1. Before assembly, the parasol must be erected, opened and aligned. You will find the detailed instructions in the manual „SCHATTELLO suitable for installation options without placement hinge“. If you do not follow this order, it will become extremely difficult to fix the centre pole with the two M10 cylinder screws.



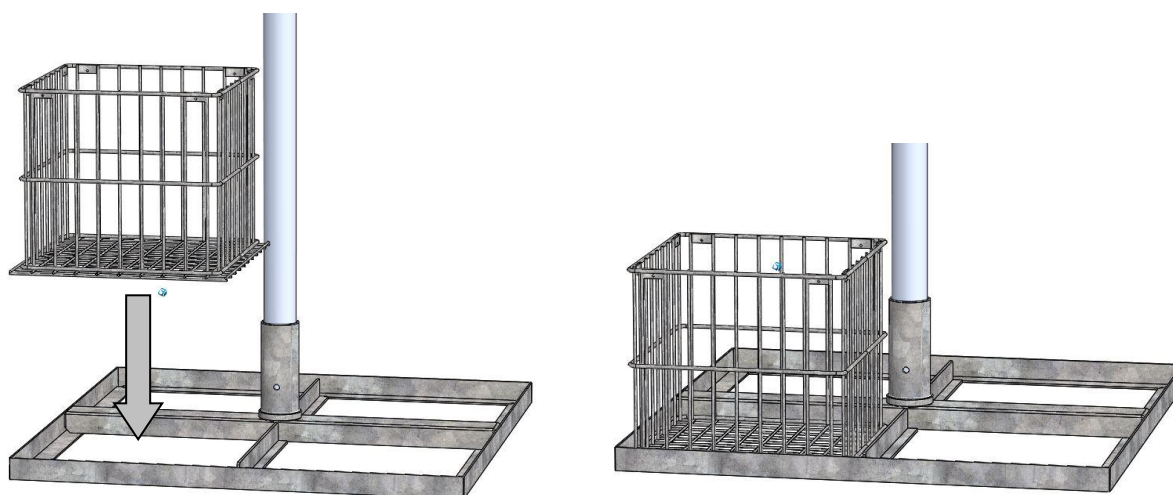
Danger

If the parasol is not fully anchored, it can cause serious or even fatal injury.

If the M10 screws work loose, the wind can lift the parasol.

- Use only the original M10 socket head screws and tighten them with a torque of 20 Nm.
- Secure the M10 socket head screws with the locknuts

2. Put the gabion basket into the pedestal.



3. Get the stones you would like to use. The grain size must not be less than 60/90mm or at least larger than the wire mesh size 50 mm. In case of a grain size of 60/90 mm the filling reaches a load of approximately 110 kg. If required, please follow the table below:

Size of parasol SCHATTELLO	Total weight all gabion baskets including stones
round: Ø 3m - Ø 5m, 2.5x3.5m	min. 124 kg, optimally min. 2 filled gabion baskets
square: 3x3m - 4.5x4.5m	
rectangular: all excluding 4x6m	
triangular: 4x4x4m, 6x6x6m	
Ø 6m - Ø 7m, 4x6m, 5x5m	min. 248 kg, optimally min. 4 filled gabion baskets

4. Fill the gabion baskets with the stones.

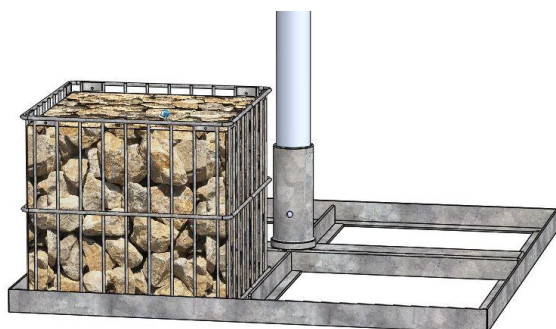


Danger

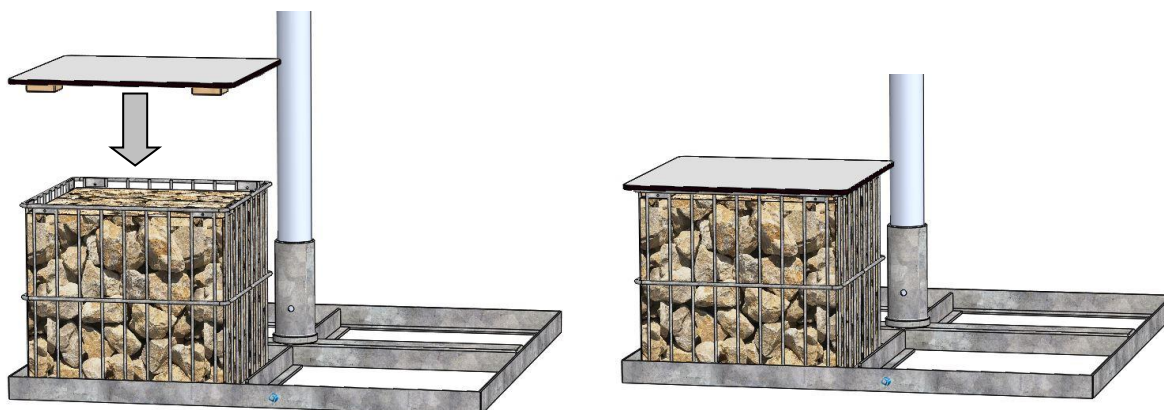
A falling parasol can cause serious or even fatal injury.

If the pedestal is not equipped with sufficient weight according to the size of the parasol, the parasol may fall and cause injuries.

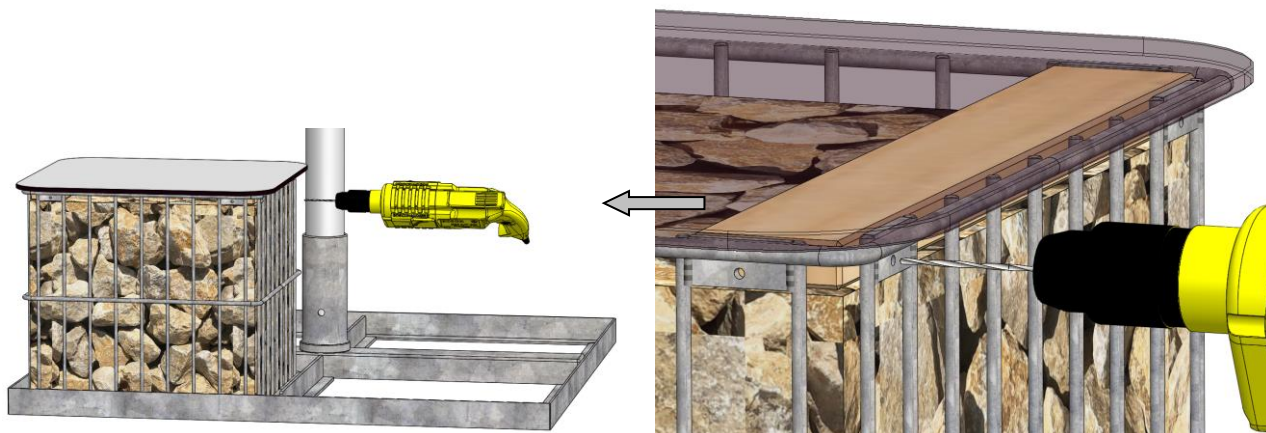
- Observe the information given in the above chart.
 - In windy locations the number of slabs must be increased.
-



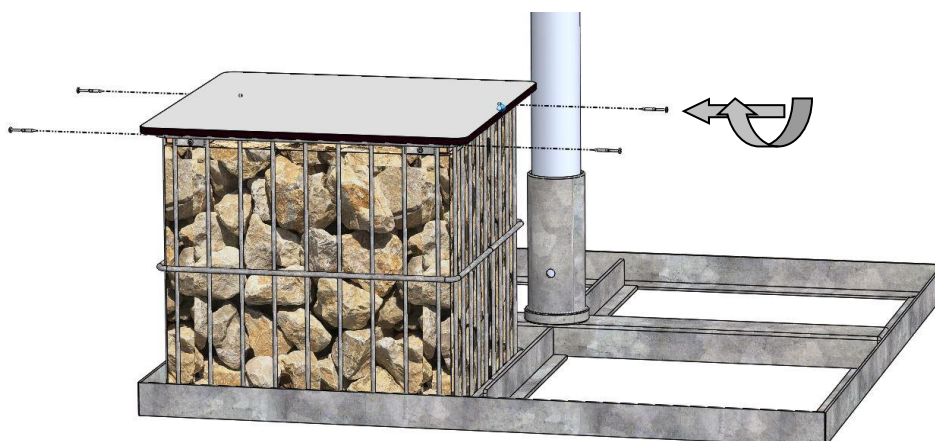
5. Put the seat plate into the gabion basket. Use the purchased MAY HPL seat plate (article no. 357890), or design your individual seat. Therefore, you will find sketches in the following chapter "DIY seating".



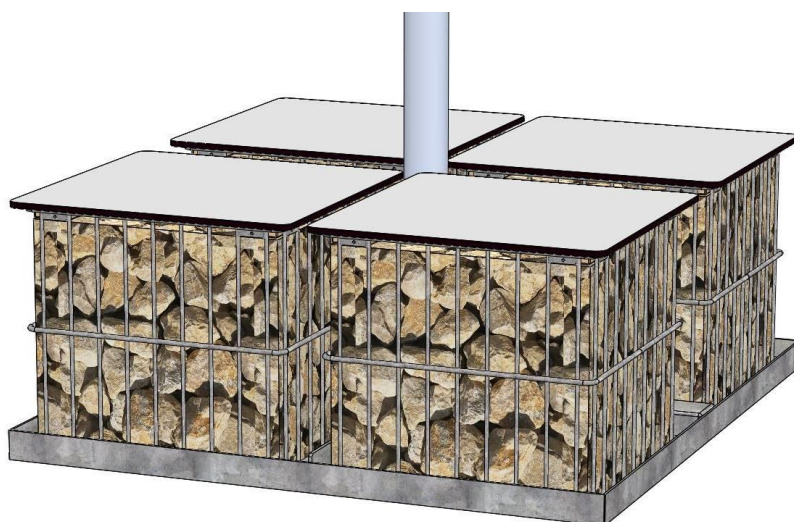
6. Pre-drilling: Drill 4 holes in the wooden slats using a \varnothing 2.5 mm drill bit. Drill through the holes in the metal fastening tabs in the long side of the wooden moulding.



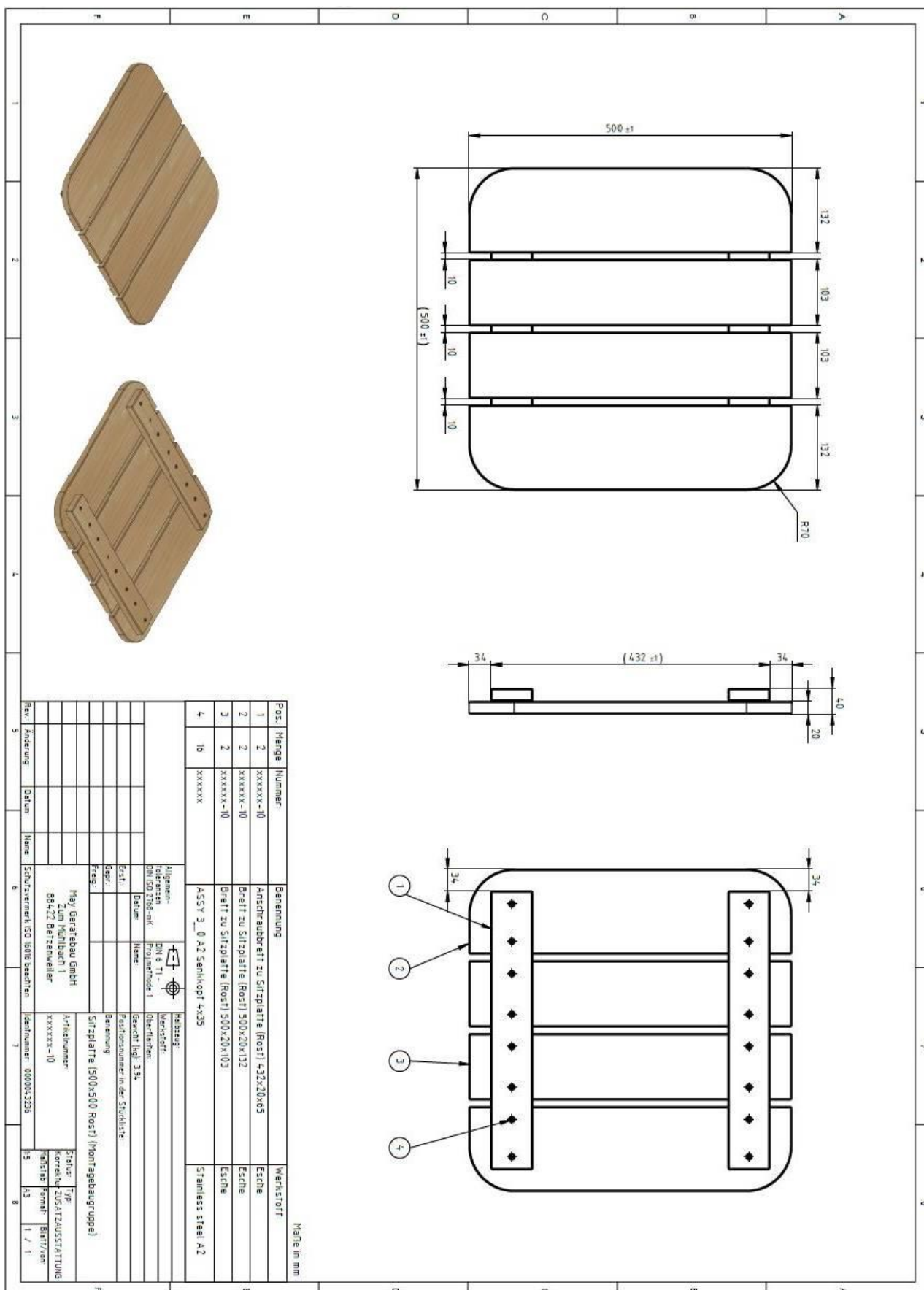
7. Use a torx 20 to fix the seat plate with the 4 screws delivered. There is one screw for each corner.

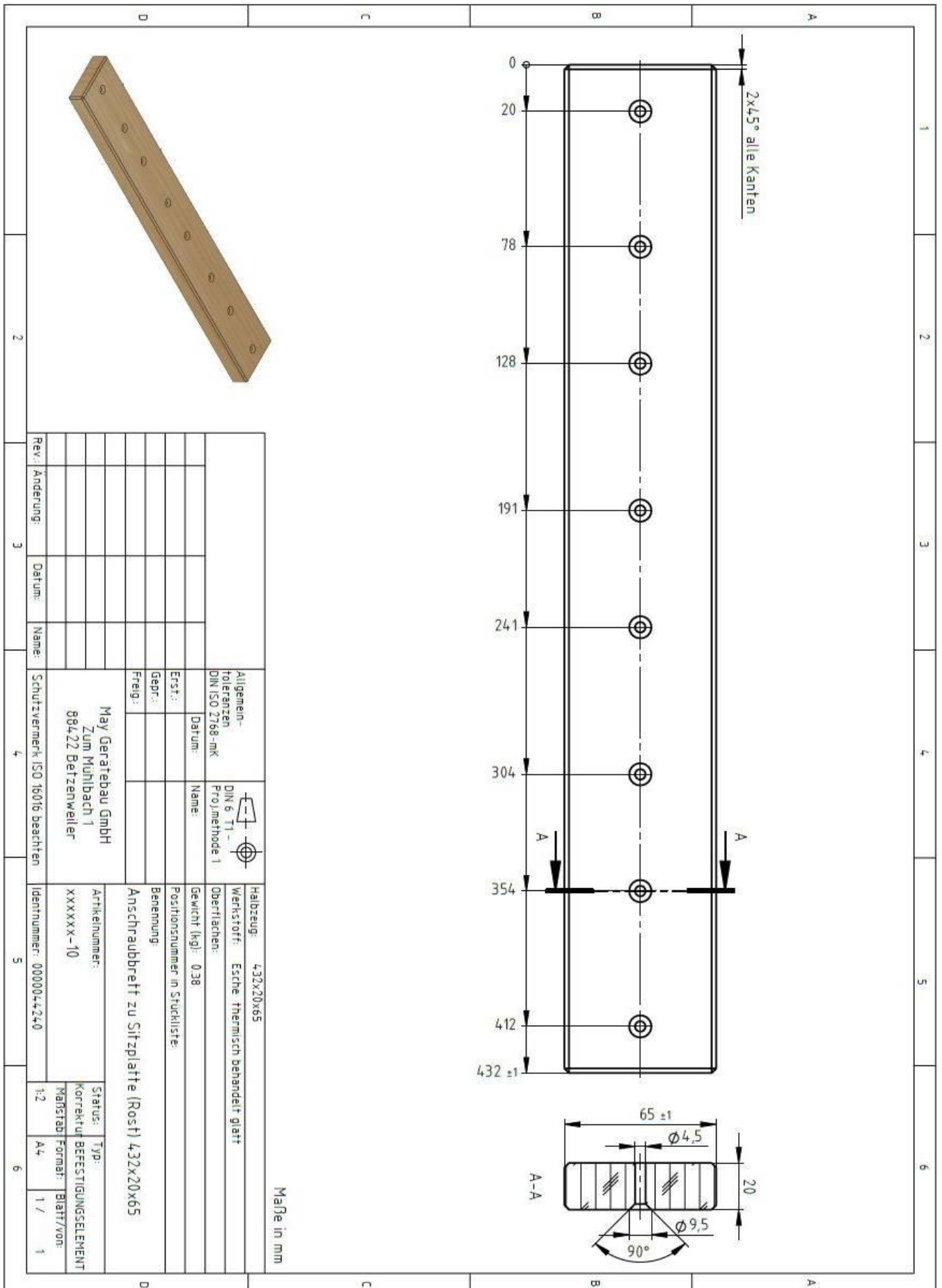


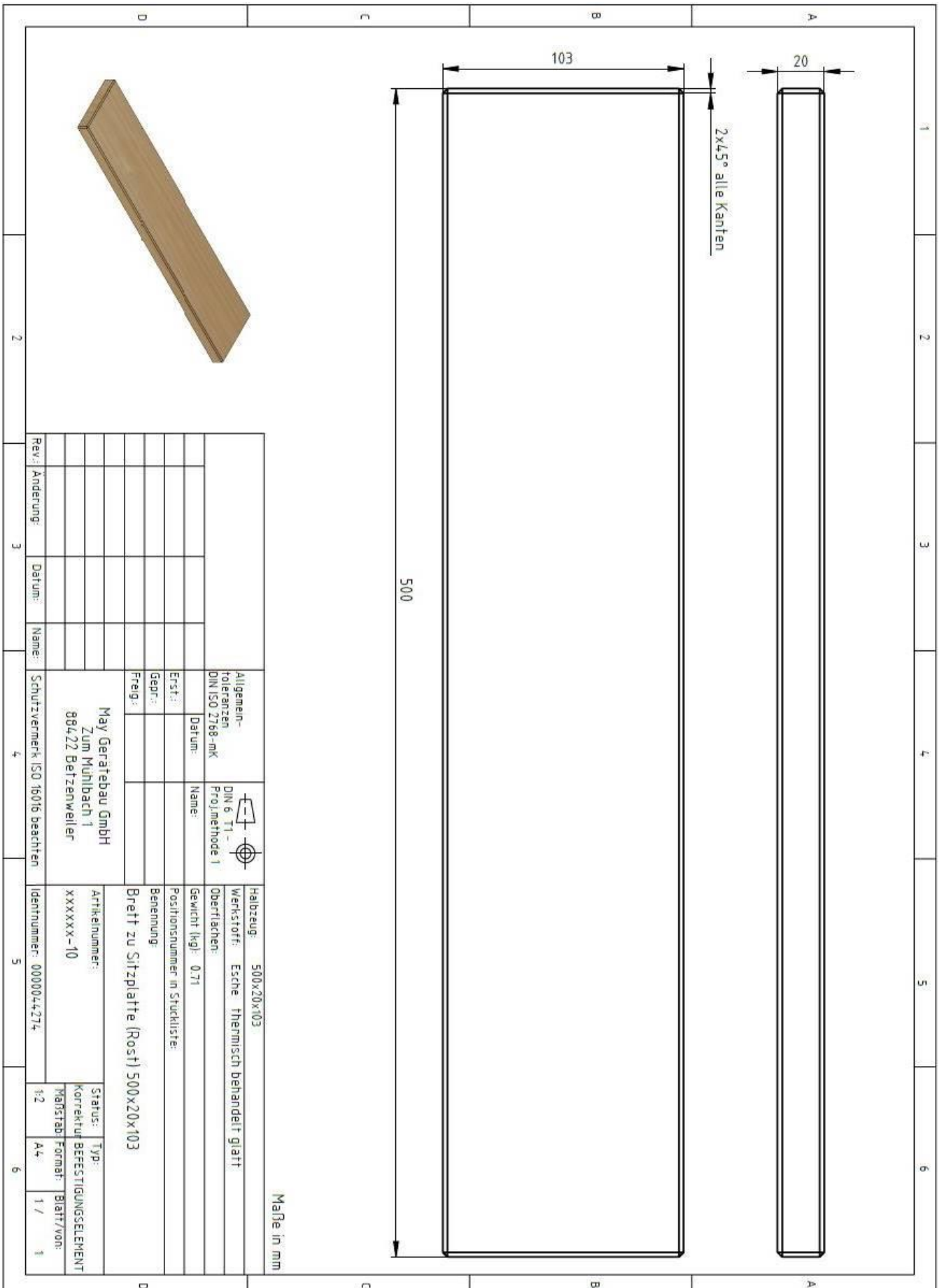
8. Repeat these steps for all gabion baskets.



Do-It-Yourself seating







Allgemein- toleranzen DIN ISO 2768-mK		DIN 6 T1 - Projemethode 1		Halbzeug: 500x20x103	
Datum:		Name:		Werkstoff: Esche thermisch behandelt glatt	
Erst:		Name:		Oberflächen:	
Gepr.:		Name:		Gewicht (kg): 0,71	
Freige:		Name:		Positionsnummer in Stückliste:	
Name:		Name:		Benennung	
Datum:		Name:		Breit zu Sitzplatte (Rost) 500x20x103	
Name:		Name:		Artikelnummer:	
Datum:		Name:		xxxxxx-10	
Name:		Name:		Identnummer: 000004274	
Datum:		Name:		Status: Typ:	
Name:		Name:		Korrektur BEFESTIGUNGSELEMENT	
Datum:		Name:		Maßstab: Format: Blatt/von:	
Name:		Name:		1/2 A4 1 / 1	

